

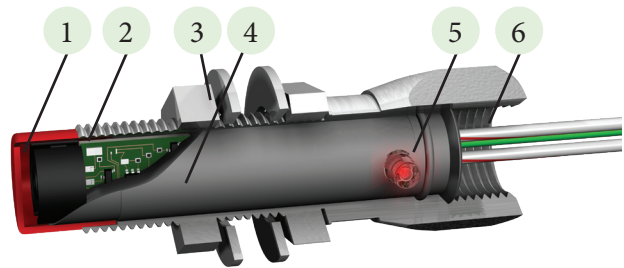
Stonel™ Hawkeye™ linear point sensors HK series



Nonincendive and intrinsically safe for point sensing

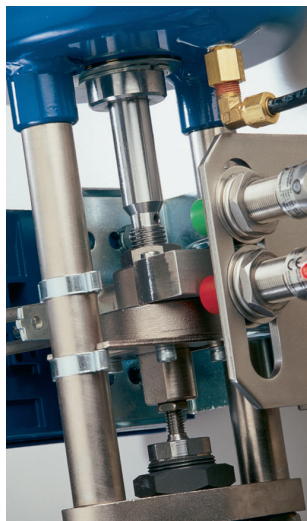
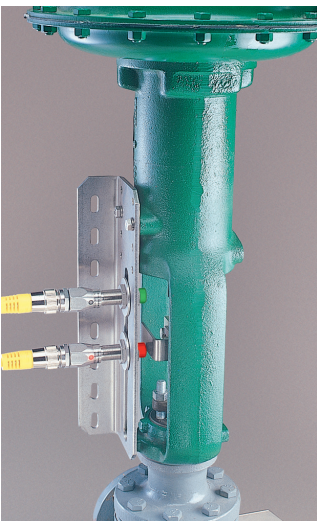


The solid state Hawkeye sensor is ideal for point sensing in corrosive and hazardous process environments. The standard red/green LEDs also speed your setup and installation by confirming power up and switch status.



Linear applications

Each pair (red and green) of Hawkeye sensors is tuned to operate independently in either long stroke or short stroke applications down to 6 mm [$\frac{1}{4}$ inch]. The Hawkeye may be triggered by existing valve hardware eliminating costly magnets and triggering systems and cutting installation time.

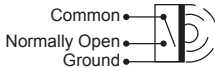
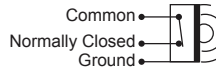


Features

- 1. Sensing head triggers on any metal**
Inductive sensing technology detects metal targets at distances up to 4-6 mm, depending on target material.
- 2. Stainless steel body is rugged and corrosion proof**
Hawkeye sensors are machined from 316 stainless steel.
- 3. Stainless steel washers and fasteners secure Hawkeye permanently to mount**
Adaptor brackets are available in L or straight.
- 4. Circuit is conformally coated and potted**
Hawkeye sensor may be temporarily submersed and electronics are shock and vibration tolerant.
- 5. High intensity LED brightly displays switch status**
Red and green LEDs may be selected to indicate open or closed.
- 6. $\frac{1}{2}$ " conduit entry or mini-connector available**
Choose from a direct conduit entry for hazardous areas or a plug-in mini-connector for rapid attachment in general purpose environments.

Switching and sensor specifications

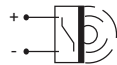
SST switching sensors (30, 31)

Configuration	(1) SST solid state sensor
Operations	Select either NO (30) or NC (31)
Maximum current inrush	1.0 amp
Maximum current continuous	0.1 amp @ 125 VAC/VDC
Minimum current	2.0 mA
Maximum leakage current	0.5 mA
Voltage range	24 - 125 VAC 8 - 125 VDC
Maximum voltage drop	6.5 volts @ 10 mA 7.5 volts @ 100 mA
Wiring diagram (30) normally open	Wiring diagram (31) normally closed
	

NAMUR sensors (40)

Configuration	(1) NAMUR sensor (EN 60947-5-6; I.S.)
Operation	Normally closed NAMUR sensors (solid state)
Voltage range	5 - 25 VDC
Current ratings	Target on I < 1 mA Target off I > 3 mA

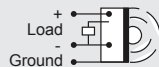
Wiring diagram (40)



Sourcing sensor (50)

Configuration	(1) PNP (Sourcing) sensor
Operation	Normally open (solid state)
Maximum current	200 mA
Minimum on current	2.0 mA
Maximum leakage current	Negligible
Voltage range	6 - 28 VDC
Maximum voltage drop	0.65 VDC

Wiring diagram (50)



Specifications

Materials of construction

Housing and fasteners	316 stainless steel
Sensing head cover	Lexan® polycarbonate
LED Lens	Polycarbonate

Other specifications

Conduit connection	½" NPT
Wiring	36" (0.9 meter) length, 18 gauge multi-strand
Sensing distance	4-6 mm <i>(sensing distance will vary depending on target material)</i>
Temperature range	-40° C to 80° C (-40° F to 176° F)
Warranty	Five years

Model selector

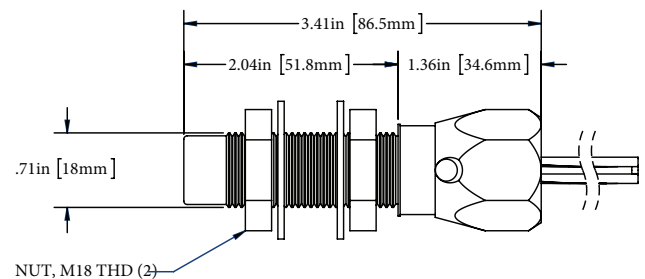
SERIES	
HK	Hawkeye (will trigger on any metal target)
FUNCTION	
30	SST sensor (NO type sensor)
31	SST sensor (NC type sensor)
40	NAMUR (EN 60947-5-6; I.S.)
50	(1) 3-wire PNP normally open
51	(1) 3-wire PNP normally closed
HOUSING	
7	Stainless steel
CONDUIT/CONNECTORS	
7	½" NPT
8	3-pin mini-connector in stainless steel
FEATURES	
SR	Red LED
SG	Green LED
Model number example	
HK 30 7 8 SG -	OPTIONAL
MODEL NUMBER	PARTNERSHIP ID
Mounting hardware required and sold separately.	Some models may include 5-digit identification suffix.

Ratings

Nonincendive <i>(Class I and II, Div. 2)</i>	Functions 30 and 31*
Intrinsically safe <i>(Ex ia, Zone 0 or Class I and II, Div. 1)</i>	Function 40*
Enclosure protection	
Type 4, 4X and 6	All models
Ingress Protection 67	All models
Approvals*	See manufacturer's website

* Only models listed on valmet official website are approved per specific rating.

Dimensions



Valmet Flow Control Inc.

Stonel product center

26271 US Hwy 59, Fergus Falls, MN 56537 USA .

Tel. +1 218 739 5774.

sales.stonel@valmet.com

valmet.com/flowcontrol

Subject to change without prior notice.

Neles, Neles Easyflow, Jamesbury, Stonel, Valvcon and Flowrox, and certain other trademarks, are either registered trademarks or trademarks of Valmet Oyj or its subsidiaries in the United States and/or in other countries.

For more information www.neles.com/trademarks

