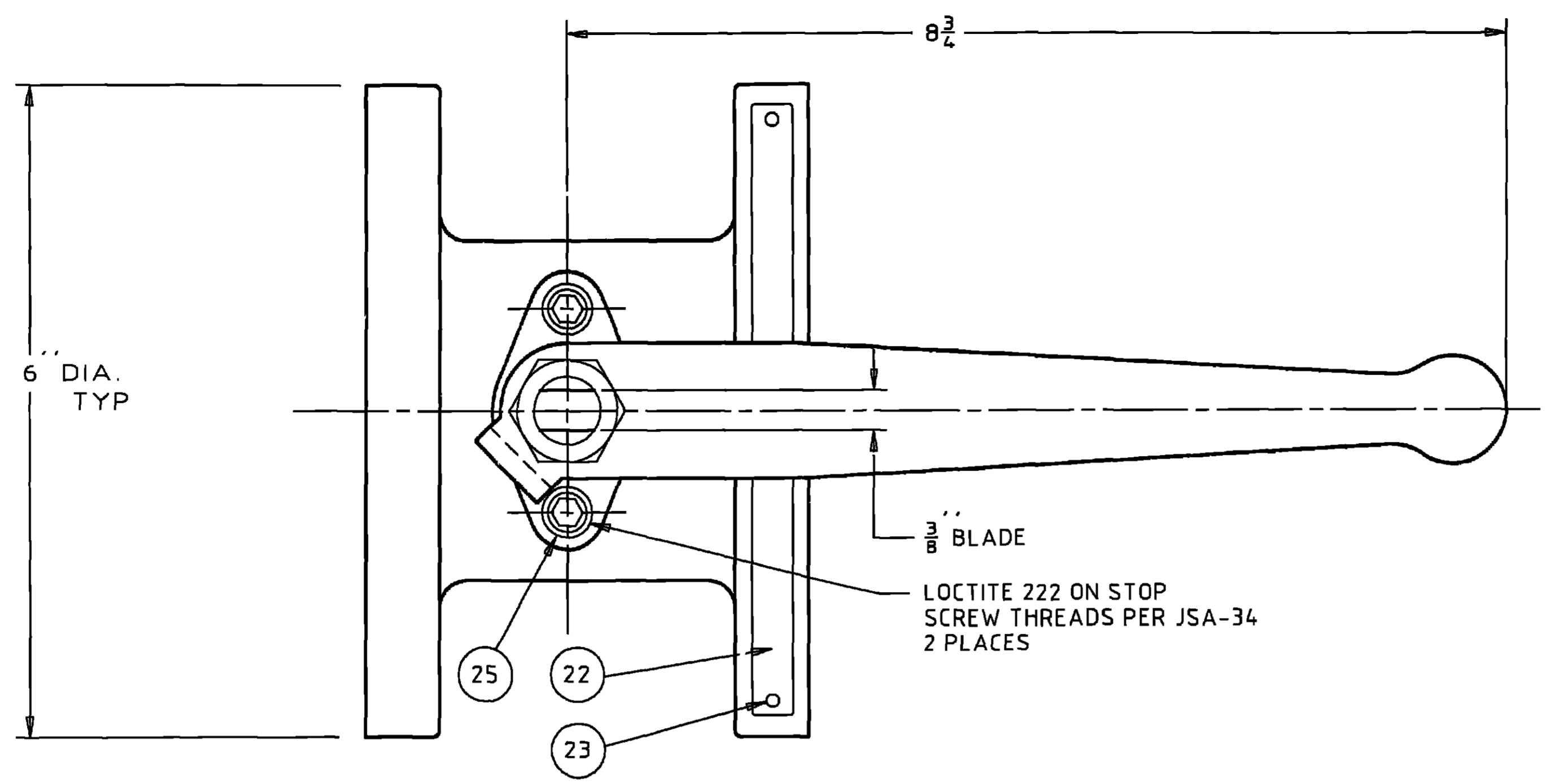
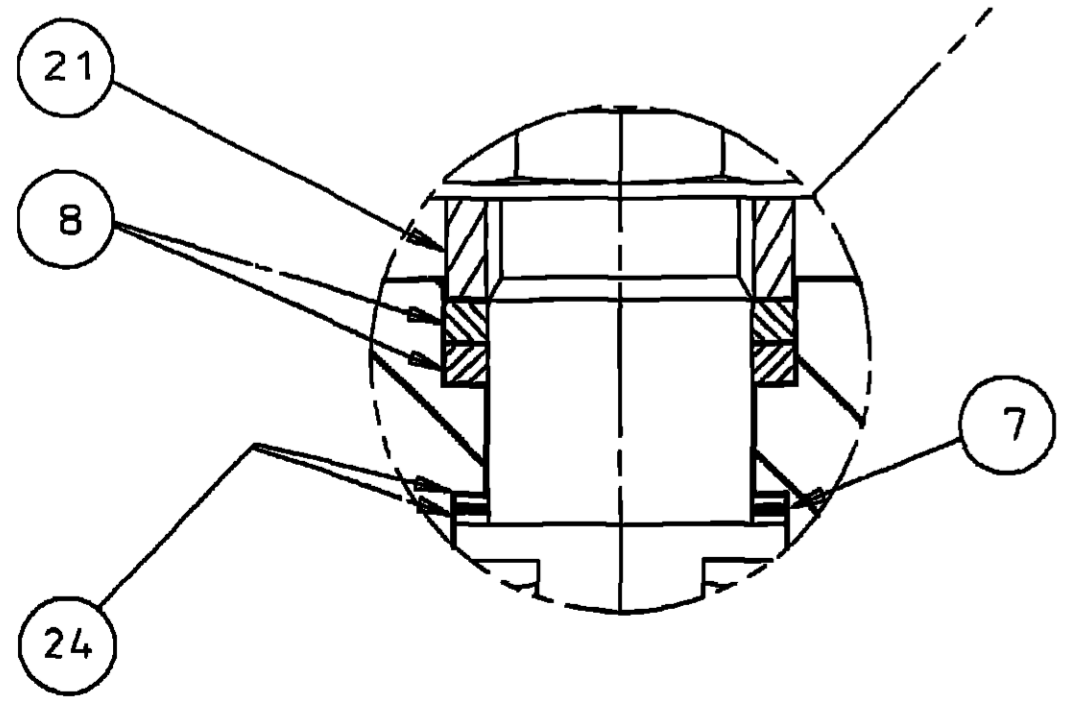
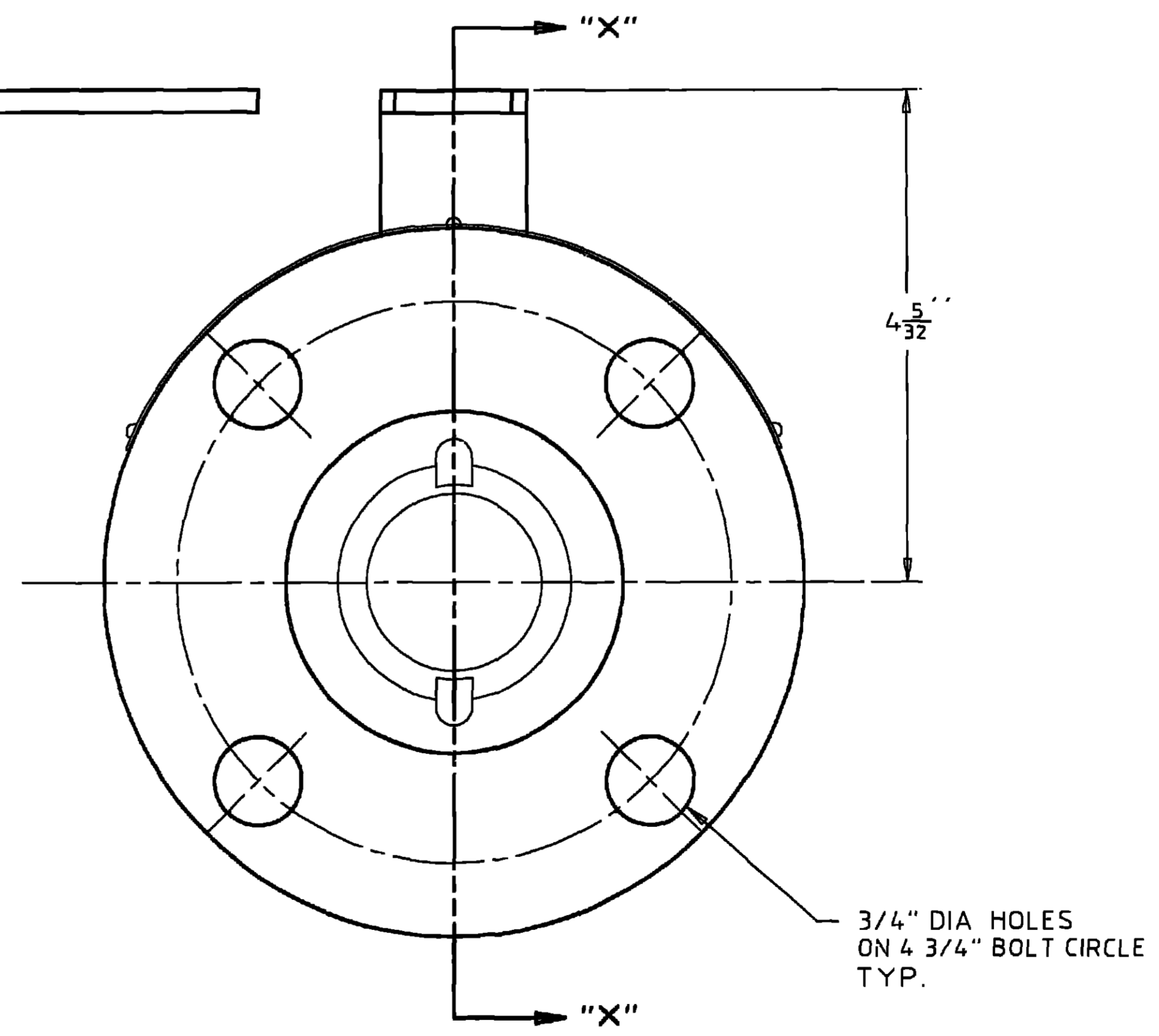
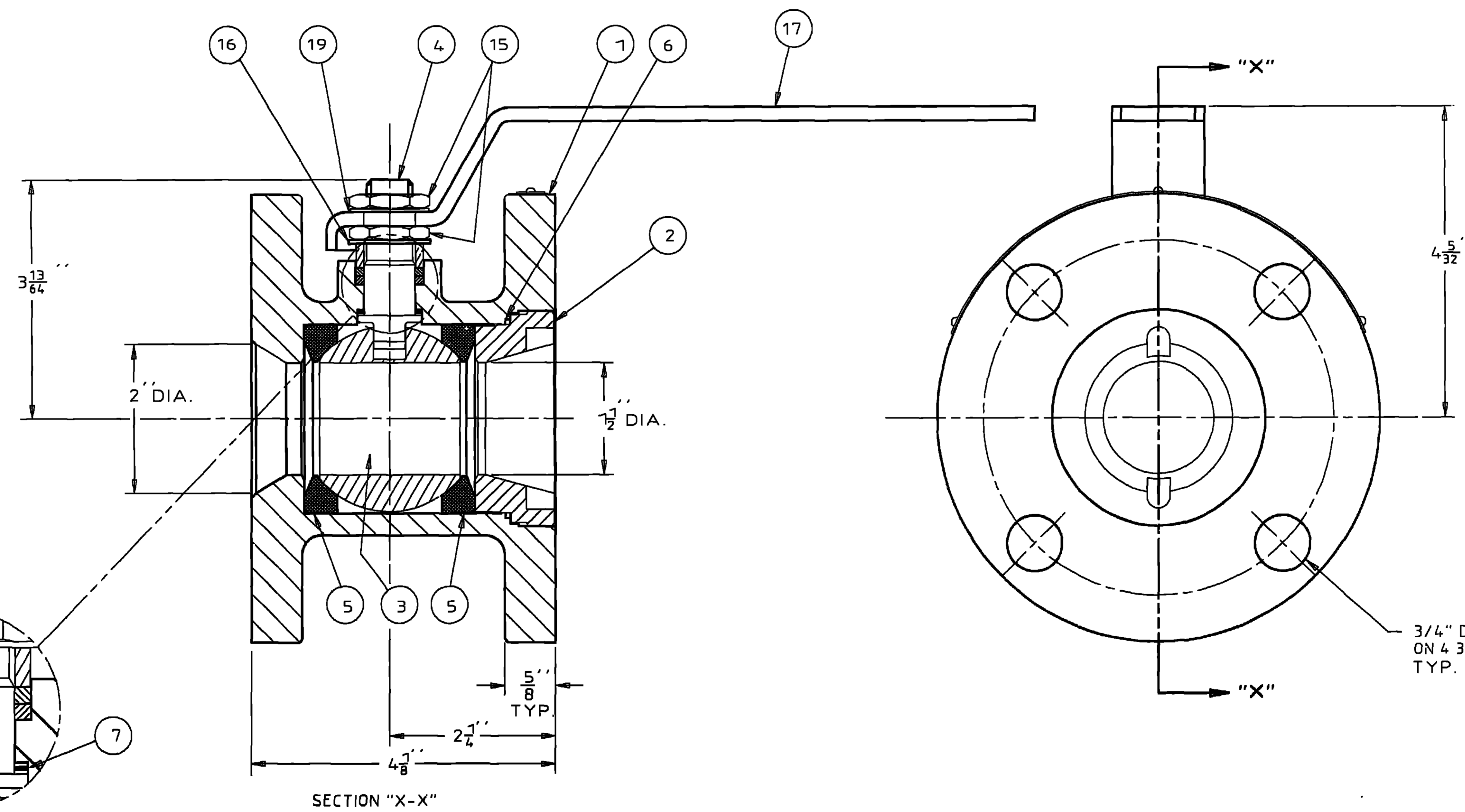


SUPERSEDING		SUPERSEDED BY			
LET	ECH	REVISION	DR	APPRV	DATE
A	13975	HANDLE WAS 6" LG	EVA	GW	25OCT91
B	17325	ADDED NOTES 1 & 2 AND REMOVED TORQUE TABLE	BA	SAL	29 DEC 98



ITEM NO.	PART NAME
1.	BODY
2.	INSERT
3.	BALL
4.	STEM
5.	SEAT
6.	BODY SEAL
7.	SECONDARY STEM SEAL
8.	UPPER STEM SEAL
15.	STEM NUT
16.	STEM WASHER
17.	HANDLE
19.	LOCKWASHER
21.	COMPRESSION RING
22.	IDENTIFICATION TAG
23.	DRIVE SCREW
24.	STEM BEARING
25.	STOP SCREW



- NOTES:
- ⓑ 1. INSERT ASSEMBLY TORQUE 170-200 FT-LBS
  - 2. STEM NUT ASSEMBLY TORQUE 160-170 IN-LBS.

THIS DRAWING AND ALL INFORMATION CONTAINED HEREIN ARE THE PROPERTY OF JAMESBURY, INC. AND ARE NOT TO BE USED EXCEPT AS AUTHORIZED BY JAMESBURY, INC.

UNLESS OTHERWISE NOTED DIMENSIONS, TOLERANCING, & DRAWING INTERPRETATION IS IN ACCORDANCE WITH ANSI Y14.5M

ANGLES - 15° FINISH

REMOVE SHARP EDGES AND CORNERS TO 0.1-0.2 RADIUS OR CHAMFER, DIMENSIONS IN INCHES

MATERIAL CODE	MATERIAL TYPE	MATERIAL SPECIFICATIONS	IDENT MARK
JSA-01			
JSA-10			
JSA-17			
JSA-34			
JST-02			

PAGE FROM PART NO		DO NOT SCALE DRAWING		SCALE	
TITLE	DRWN	DATE	APPVD	DATE	REV
ASSEMBLY 2" 5RRF TOP LOADING VALVE	RRH	28 JUN 91	GRW	28 JUN 91	B

<b>JAMESBURY</b> VALVE CONTROL GROUP WORCESTER MA, U.S.A.	SIZE D	DWG NO 5100	SHEET 1 OF 1
---	--------	-------------	--------------