

Jamesbury™ supervisory cock valves, electric interlocking fuel gas and fuel oil cocks - Figure 1051

The Jamesbury Figure 1051 Supervisory Cocks are FM (Factory Mutual) approved to provide shutoff and position indication for proper fuel light-off of either fuel oil or gas burners. Developed for use with semiautomatic or manual safety interlock burner management systems, these electric interlocking cocks indicate the burner cock is closed before the light-off sequence can begin.

Figure 1051 Supervisory Cocks allow fast actuation, have low turning torque, and feature reliable, tight sealing for critical fuel control applications. Should the valve be accidentally moved out of the full closed position, the “not closed” condition is signalled to the safety interlock system. Closing the valve requires only a quick quarter turn of the handle. For added protection, the position of the valve handle gives visual “at a glance” indication of open or closed position.



The importance of certified performance

Obtaining certification only achievable through rigorous testing is not only a matter of meeting industry standards and regulations, but also an assurance of quality and reliability. Valmet offers unparalleled performance with its offering of certified Jamesbury electric interlocking fuel gas and fuel oil cock valves for burner management systems.

Our promise of quality and reliability

Valmet certified Jamesbury FM approved packages offer Innovation through patented seat and seal designs, Xtreme™ seat material and limit switch performance to maximize plant uptime.

Single source responsibility

All components of the Valmet 1051 packages are Valmet designed and engineered products. This insures reliable, safe and worry free operation of the supervisory cock valves through many years of service.

Approved valve models

Valves are available with either threaded or socket weld ends in sizes 1/4" - 2" (8 - 50), ASME 150 and ASME 300 flanged design in sizes 1/2" - 6" (15 - 150) reduced port and ASME 150 and ASME 300 flanged design in 1/2" - 4" (15 - 100) full port construction. The threaded ASME and flanged valve offerings can also be supplied with a PED (Pressure Equipment Directive) certification. Valves are offered in Carbon steel (WCB) and 316SS (CF8M) bodies. Trim material is 316SS as standard.

Size	Model	Code	End connection
1/4" - 2" (8 - 50)	A Style	AZ	Reduced port, threaded
1/2" - 2" (15 - 50)	Clincher (2000 Series)	21FM/23FM	Reduced port, threaded
1/4" - 2" (8 - 50)	Eliminator	9F	Reduced port, threaded
1/2" - 2" (15 - 50)	4000 Series	4A/4C	Reduced port, threaded or socket weld
1/2" - 1-1/2" (15 - 40)	4000 Series	4B/4D	Full port, threaded or socket weld
1/2" - 6" (15 - 150)	7000 Series	7150/7180	ASME 150 reduced port, flanged
1/2" - 6" (15 - 150)	7000 Series	730S/738S	ASME 300 reduced port, flanged (Short pattern)
1/2" - 6" (15 - 150)	7000 Series	7300/7380	ASME 300 reduced port, flanged
1/2" - 4" (15 - 100)	9000 Series	9150/9180	ASME 150 full port, flanged
1/2" - 4" (15 - 100)	9000 Series	9300/9380	ASME 300 full port, flanged

Valve design features and benefits

Polymeric flexible lip, self relieving seat design offers tight shut-off to API 598, better than ANSI/FCI 70-2 Class VI, in either direction and extended cycle life with a minimum of maintenance; providing tightest shut-off available. Xtreme seat material, developed in the Valmet Polymer Research Laboratory, provides longer life and industry leading expanded performance. This equals a lower cost of ownership.

API standards for 'Process Valves' require adjustable packing. Valmet's independently adjustable stem sealing, including 2" and smaller patented design, provides a life cycle that compliments the enhanced performance of the seat technology; and lowers the risk of fugitive emissions.

Stonel limit switches

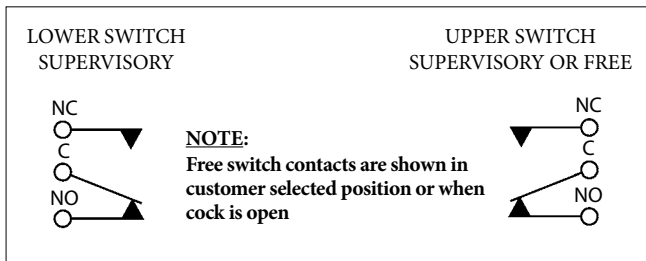
Housing assemblies are FM approved to NEMA 4, 4X and 6; Class I, Div. 1, Groups B, C & D; Class II, Div. 1, Groups E, F & G for watertight and explosive proof hazardous location service.

Limit switches are actuated directly from the valve drive train, reliably giving a true valve position signal. Switches designated as "supervisory" are set so they are activated only when the valve is in the fail position. The "supervisory" switch(es) marked so as to indicate the, as assembled, position. Switches marked as "free" are not marked and can be adjusted.

Switch arrangements

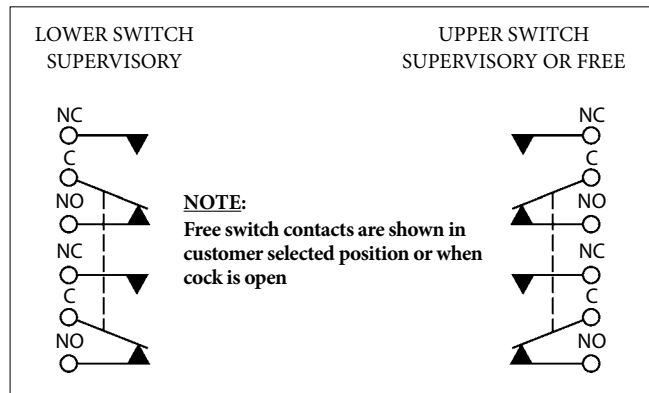
Contacts of each switch are in position shown when valve is closed

SPDT switch contact schematic



Available switch combinations are shown in the "How to Order" table. Switches designated as "supervisory" are set so that they are actuated only when the valve is in the fully closed position. They are then secured to avoid accidental relocation and marked to show any attempts at tampering. Switches indicated as "free" for use with indicator lights or other control or sequencing purposes, are normally set to close when the valve is fully open, and may be adjusted to operate at any valve position (DPDT switches can be adjusted only for the end of travel, i.e., valve full open or valve full closed).

DPDT switch contact schematic



Specifications

Maximum operating pressure ratings

Figure 1051 Supervisory Cocks are rated for service based on FM approval tests as shown to the right. Approval is for use where the fluid temperature does not exceed 250°F (121°C) and the ambient temperature does not exceed 125°F (51.7°C).

Maximum operating pressure - psi											
Valve Size (inches)	A-Style	Clincher (2000 Series)	Eliminator	4000 Series (Non-ASME)		4000 Series (ASME)		7000 Series		9000 Series	
				Delrin Seats	XTREME Seats	Delrin Seats	XTREME Seats	ASME 150 Class	ASME 300 Class	ASME 150 Class	ASME 300 Class
1/4	1200	-	1200	-	-	-	-	-	-	-	-
3/8	1200	-	1200	-	-	-	-	-	-	-	-
1/2	1200	400	1200	2250	1200	1375	1200	285	740	285	740
3/4	1200	400	1200	2250	1200	1375	1200	285	740	285	740
1	1200	400	1200	2250	1200	1375	1200	285	740	285	740
1-1/4	1200	400	1200	2250	1200	1375	1200	-	-	-	-
1-1/2	1200	400	1200	2250	1200	1375	1200	285	740	285	740
2	1200	400	1200	2250	1200	1375	1200	285	740	285	285
3	-	-	-	-	-	-	-	285	285	285	285
4	-	-	-	-	-	-	-	285	285	285	285
6	-	-	-	-	-	-	-	285	285	-	-

Maximum operating pressure - bar											
Valve Size (DN)	A-Style	Clincher (2000 Series)	Eliminator	4000 Series (Non-ASME)		4000 Series (ASME)		7000 Series		9000 Series	
				Delrin Seats	XTREME Seats	Delrin Seats	XTREME Seats	ASME 150 Class	ASME 300 Class	ASME 150 Class	ASME 300 Class
8	82.7	-	82.7	-	-	-	-	-	-	-	-
10	82.7	-	82.7	-	-	-	-	-	-	-	-
15	82.7	27.6	82.7	155.1	82.7	94.8	82.7	19.6	51.1	19.6	51.1
20	82.7	27.6	82.7	155.1	82.7	94.8	82.7	19.6	51.1	19.6	51.1
25	82.7	27.6	82.7	155.1	82.7	94.8	82.7	19.6	51.1	19.6	51.1
32	82.7	27.6	82.7	155.1	82.7	94.8	82.7	-	-	-	-
40	82.7	27.6	82.7	155.1	82.7	94.8	82.7	19.6	51.1	19.6	51.1
50	82.7	27.6	82.7	155.1	82.7	94.8	82.7	19.6	51.1	19.6	19.6
80	-	-	-	-	-	-	-	19.6	19.6	19.6	19.6
100	-	-	-	-	-	-	-	19.6	19.6	19.6	19.6
150	-	-	-	-	-	-	-	19.6	19.6	-	-

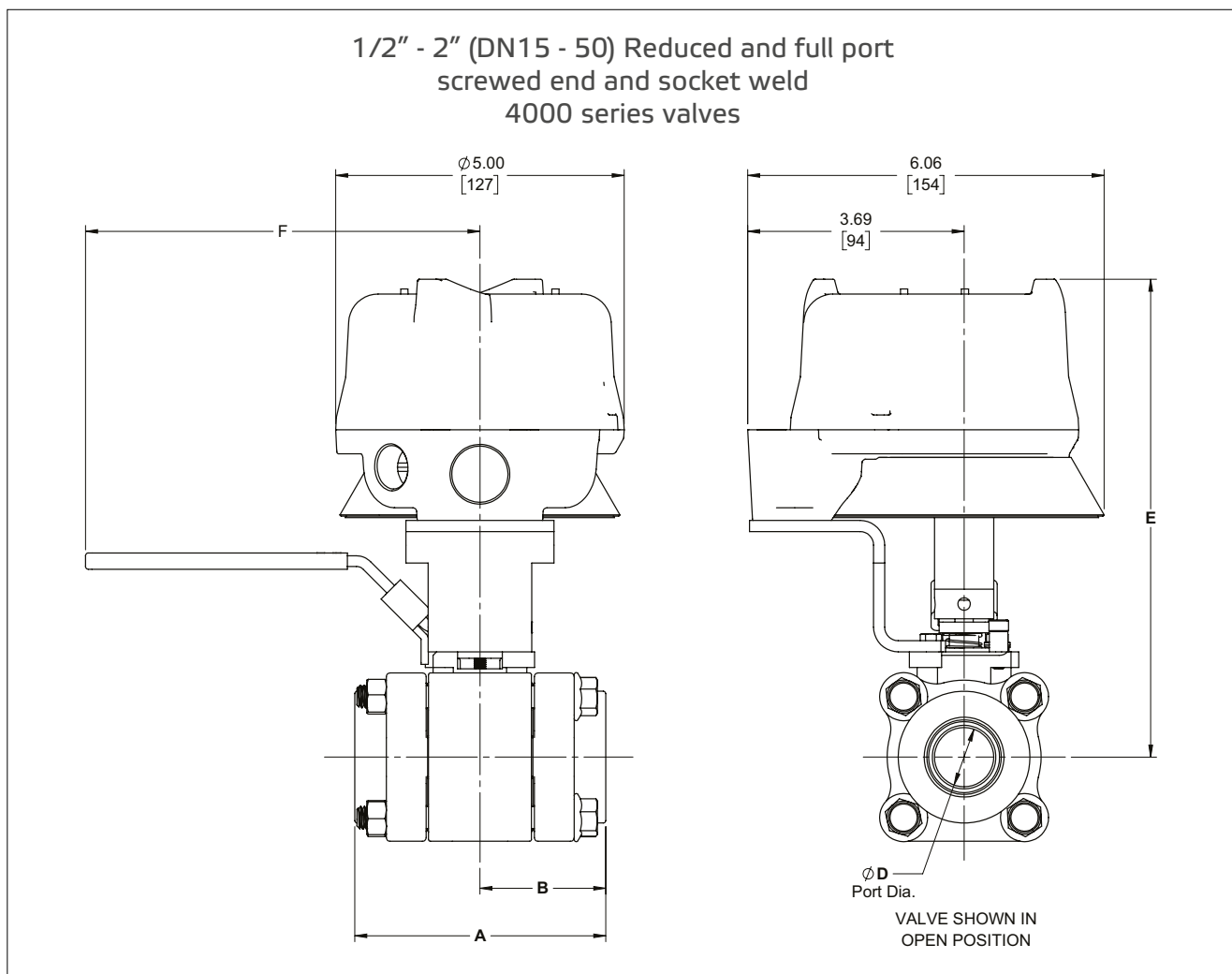
Flow data

The table below provides flow coefficients of the Supervisory Cocks covered in the bulletin. The Cv values represent the flow of water at +60°F through the valve in U.S. gallons per minute at a pressure drop of 1psi. The metric equivalent, Kv, is the flow of water at 16°C through the valve in cubic meters per hour at a pressure drop of 1 kg/cm². To convert Cv to Kv multiply by 0.8569.

Flow data - Cv							
Valve Size (inches)	A-Style	Clincher (2000 Series)	Eliminator	4000 Series (Reduced Port)	4000 Series (Full Port)	7000 Series	9000 Series
	Cv	Cv	Cv	Cv	Cv	Cv	Cv
1/4	6	-	6	-	-	-	-
3/8	10	-	10	-	-	-	-
1/2	13	16	13	13	13	9	9
3/4	33	37	33	33	40	19	50
1	44	49	44	44	65	45	100
1-1/4	46	49	46	46	90	-	-
1-1/2	95	100	95	95	135	125	270
2	111	115	111	111	-	165	490
3	-	-	-	-	-	350	1160
4	-	-	-	-	-	550	2200
6	-	-	-	-	-	765	-

Flow data - Kv							
Valve Size (DN)	A-Style	Clincher (2000 Series)	Eliminator	4000 Series (Reduced Port)	4000 Series (Full Port)	7000 Series	9000 Series
	Kv	Kv	Kv	Kv	Kv	Kv	Kv
8	5.1	-	5.1	-	-	-	-
10	8.6	-	8.6	-	-	-	-
15	11.1	13.7	11.1	11.1	11.1	7.7	7.7
20	28.3	31.7	28.3	28.3	34.3	16.3	42.8
25	37.7	42.0	37.7	37.7	55.7	38.6	85.7
32	39.4	42.0	39.4	39.4	77.1	-	-
40	81.4	85.7	81.4	81.4	115.7	107.1	231.4
50	95.1	98.5	95.1	95.1	-	141.4	419.9
80	-	-	-	-	-	299.9	994.0
100	-	-	-	-	-	471.3	1885.2
150	-	-	-	-	-	655.5	-

Dimensions



4000 series, reduced port, screwed end & socket weld - inches						
Size (inches)	A	B	D	E**	F	Weight (lbs)
1/2	2.59	1.29	0.50	7.54	5.00	17
3/4	3.01	1.50	0.69	7.70	5.00	18
1	3.69	1.85	0.88	7.87	6.50	20
1-1/4	4.22	2.11	1.00	8.00	6.50	21
1-1/2	4.58	2.29	1.25	8.63	8.00	25
2	5.11	2.55	1.50	8.81	8.00	28

**= Add 2.12" for QX4V limit switch models

4000 series, reduced port, screwed end & socket weld - millimeters						
Size (DN)	A	B	D	E**	F	Weight (kg)
15	66	33	13	191	127	8
20	76	38	18	196	127	8
25	94	47	22	200	165	9
32	107	54	25	203	165	10
40	116	58	32	219	203	11
50	130	65	38	224	203	13

**= Add 54mm for QX4V limit switch models

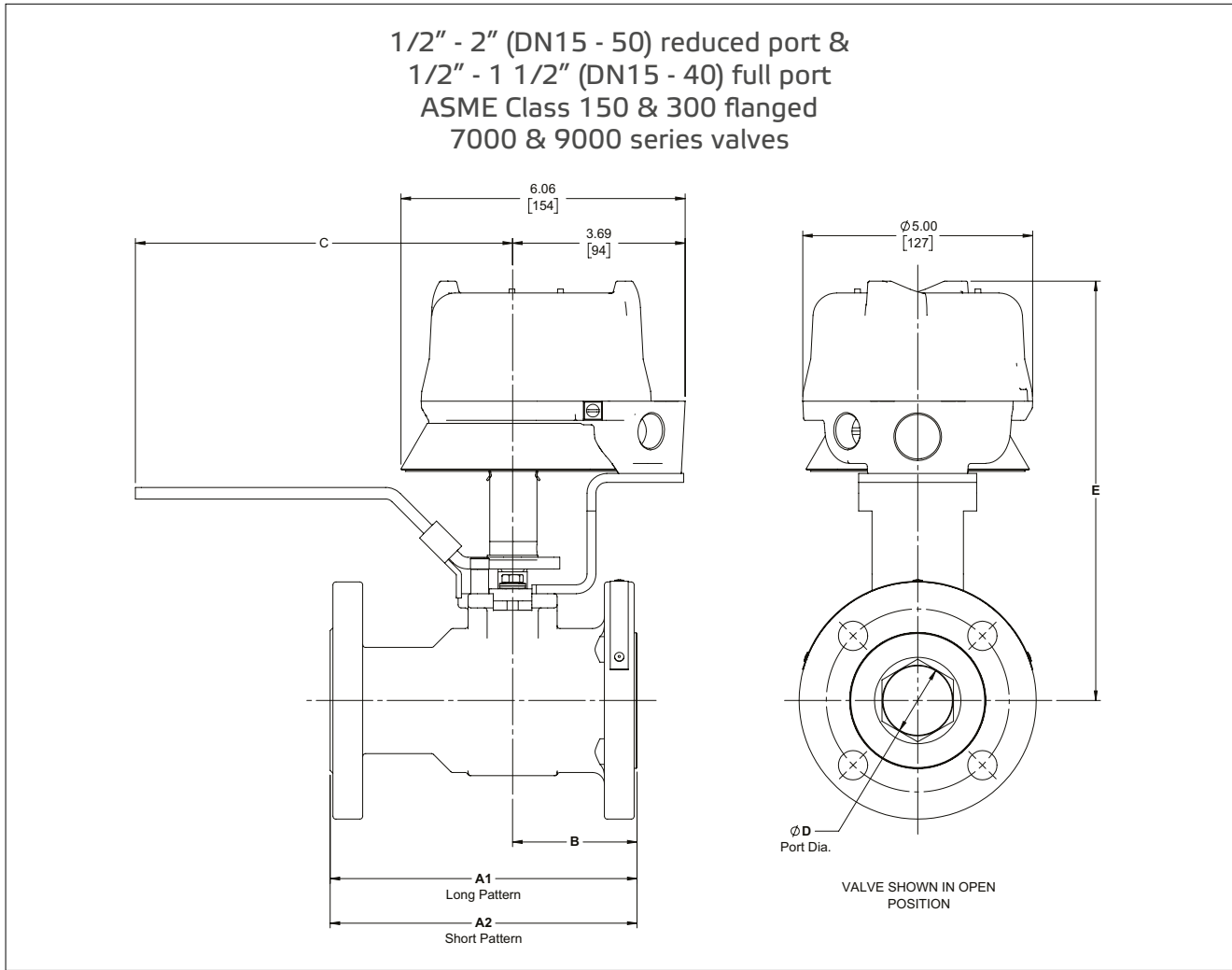
4000 series, full port, screwed end & socket weld - inches						
Size (inches)	A	B	D	E**	F	Weight (lbs)
1/2	2.59	1.29	0.50	7.54	5.00	17
3/4	3.69	1.85	0.88	7.87	6.50	20
1	4.22	2.11	1.00	8.00	6.50	22
1-1/4	4.58	2.29	1.25	8.63	8.00	25
1-1/2	5.11	2.55	1.50	8.81	8.00	29

**= Add 2.12" for QX4V limit switch models

4000 series, full port, screwed end & socket weld - millimeters						
Size (DN)	A	B	D	E**	F	Weight (kg)
15	66	33	13	191	127	8
20	94	47	22	200	165	9
25	107	54	25	203	165	10
32	116	58	32	219	203	11
40	130	65	38	224	203	13

**= Add 54mm for QX4V limit switch models

Dimensions



7150, ASME Class 150, flanged - inches						
Size (inches)	A1	B	C	D	E**	Weight (lbs)
1/2	4.25	1.94	5.00	0.50	7.54	19
3/4	4.63	2.00	5.00	0.69	7.70	20
1	5.00	2.19	6.50	0.88	7.87	23
1-1/2	6.50	2.65	8.00	1.25	8.63	27
2	7.00	2.64	8.00	1.50	8.81	31

**= Add 2.12" for QX4V limit switch models

7150, ASME Class 150, flanged - millimeters						
Size (DN)	A1	B	C	D	E**	Weight (kg)
15	108	49	127	13	191	8
20	118	51	127	18	196	9
25	127	56	165	22	200	10
40	165	67	203	32	219	12
50	178	67	203	38	224	14

**= Add 54mm for QX4V limit switch models

7300, ASME Class 300, flanged - inches						
Size (inches)	A1	B	C	D	E**	Weight (lbs)
1/2	5.50	1.94	5.00	0.50	7.54	21
3/4	6.00	2.00	5.00	0.69	7.70	23
1	6.50	2.19	6.50	0.88	7.87	25
1-1/2	7.50	2.65	8.00	1.25	8.63	31
2	8.50	2.64	8.00	1.50	8.81	37

**= Add 2.12" for QX4V limit switch models

7300, ASME Class 300, flanged - millimeters						
Size (DN)	A1	B	C	D	E**	Weight (kg)
15	140	49	127	13	191	10
20	152	51	127	18	196	10
25	165	56	165	22	200	11
40	191	67	203	32	219	14
50	216	67	203	38	224	17

**= Add 54mm for QX4V limit switch models

730S (Short pattern), ASME Class 300, flanged - inches						
Size (inches)	A2	B	C	D	E**	Weight (lbs)
1/2	4.25	1.94	5.00	0.50	7.54	20
3/4	4.63	2.00	5.00	0.69	7.70	23
1	5.00	2.19	6.50	0.88	7.87	25
1-1/2	6.50	2.65	8.00	1.25	8.63	33
2	7.00	2.64	8.00	1.50	8.81	36

**= Add 2.12" for QX4V limit switch models

730S (Short pattern), ASME Class 300, flanged - millimeters						
Size (DN)	A2	B	C	D	E**	Weight (kg)
15	108	49	127	13	191	9
20	118	51	127	18	196	10
25	127	56	165	22	200	11
40	165	67	203	32	219	15
50	178	67	203	38	224	16

**= Add 54mm for QX4V limit switch models

9150, ASME Class 150, flanged - inches						
Size (inches)	A1	B	C	D	E**	Weight (lbs)
1/2	4.25	1.94	5.00	0.50	7.54	19
3/4	4.63	2.19	6.50	0.88	7.87	25
1	5.00	2.19	6.50	1.00	8.00	28
1-1/2	6.50	2.64	8.00	1.50	8.81	32

**= Add 2.12" for QX4V limit switch models

9150, ASME Class 150, flanged - millimeters						
Size (DN)	A1	B	C	D	E**	Weight (kg)
15	108	49	127	13	192	8
20	118	56	165	22	200	11
25	127	56	165	25	203	13
40	165	67	203	38	224	15

**= Add 54mm for QX4V limit switch models

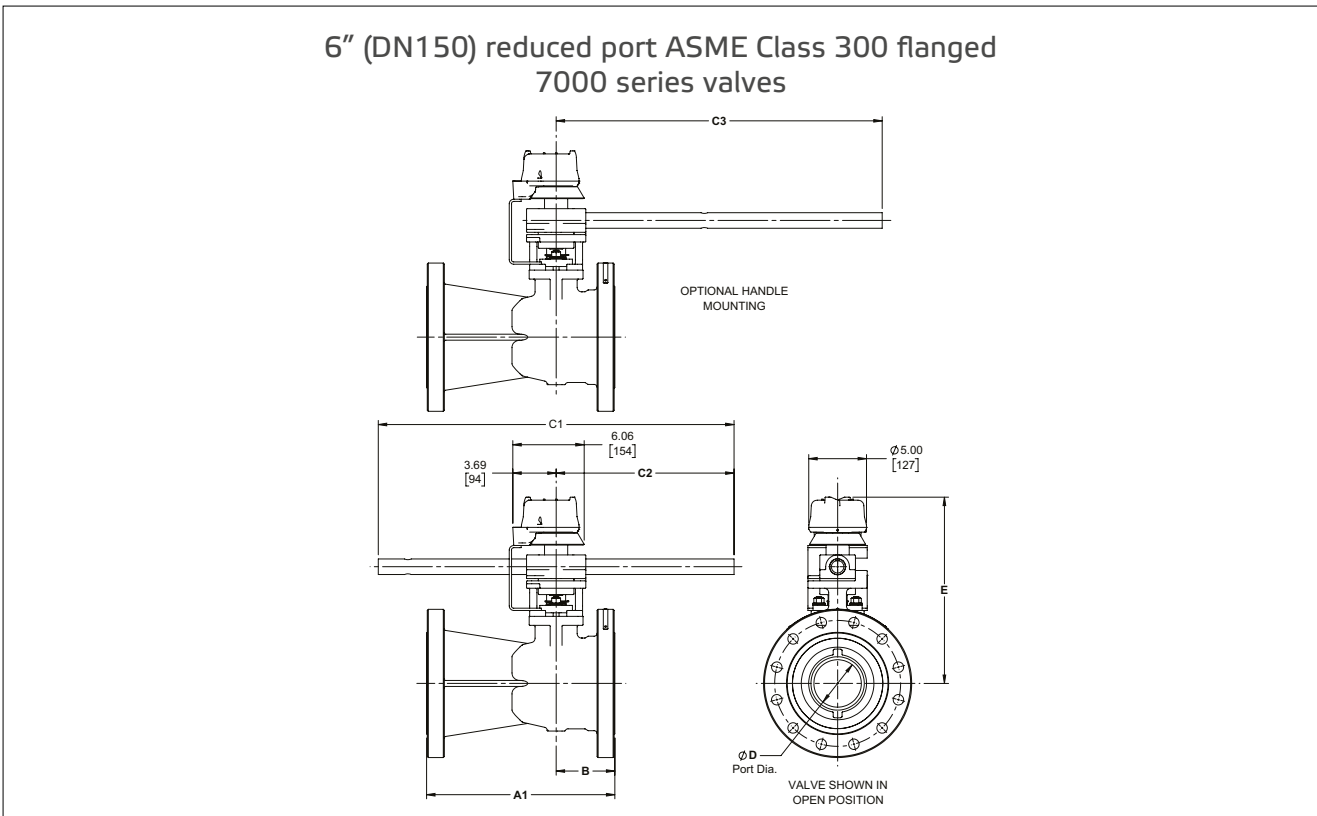
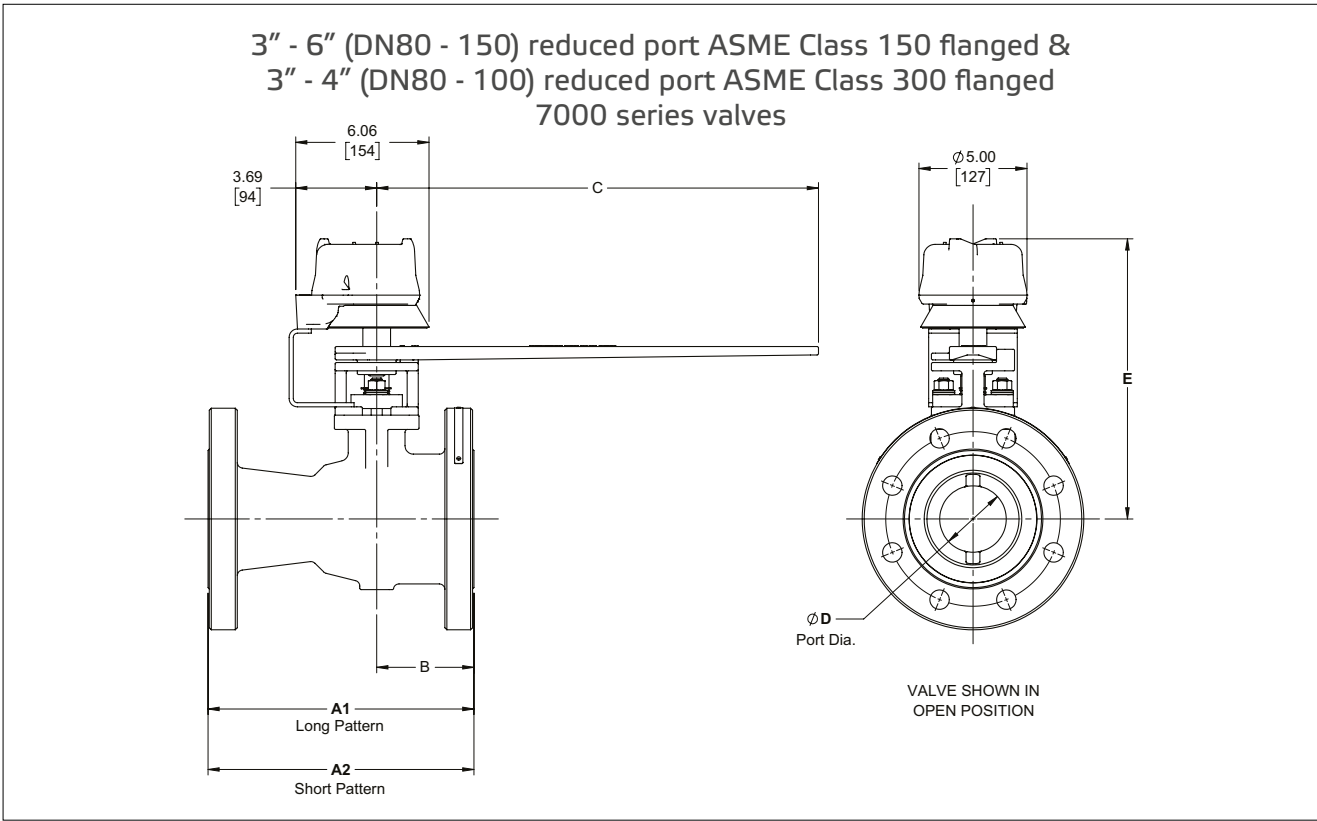
9300, ASME Class 300, flanged - inches						
Size (inches)	A1	B	C	D	E**	Weight (lbs)
1/2	5.50	1.94	5.00	0.50	7.54	21
3/4	6.00	2.19	6.50	0.88	7.87	28
1	6.50	2.19	6.50	1.00	8.00	32
1-1/2	7.50	2.64	8.00	1.50	8.81	37

**= Add 2.12" for QX4V limit switch models

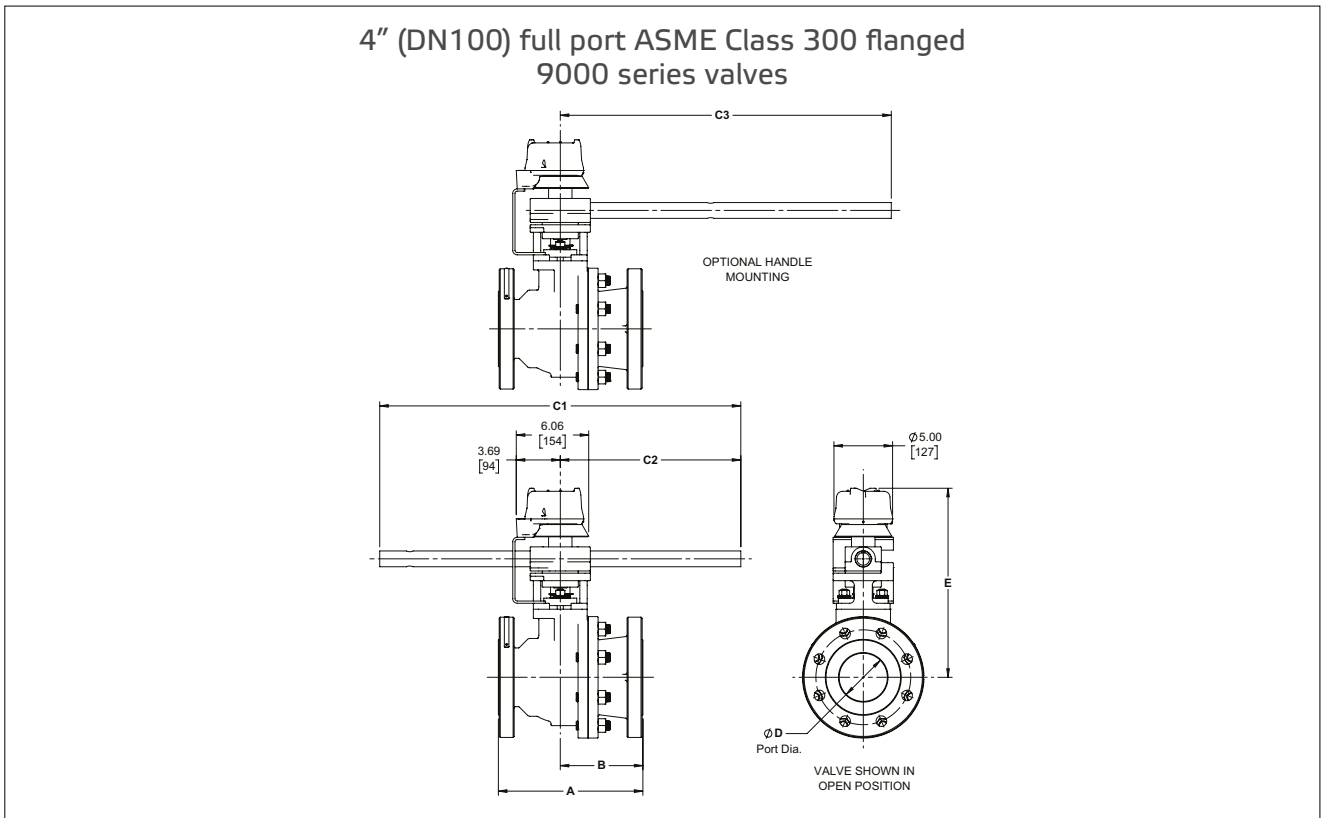
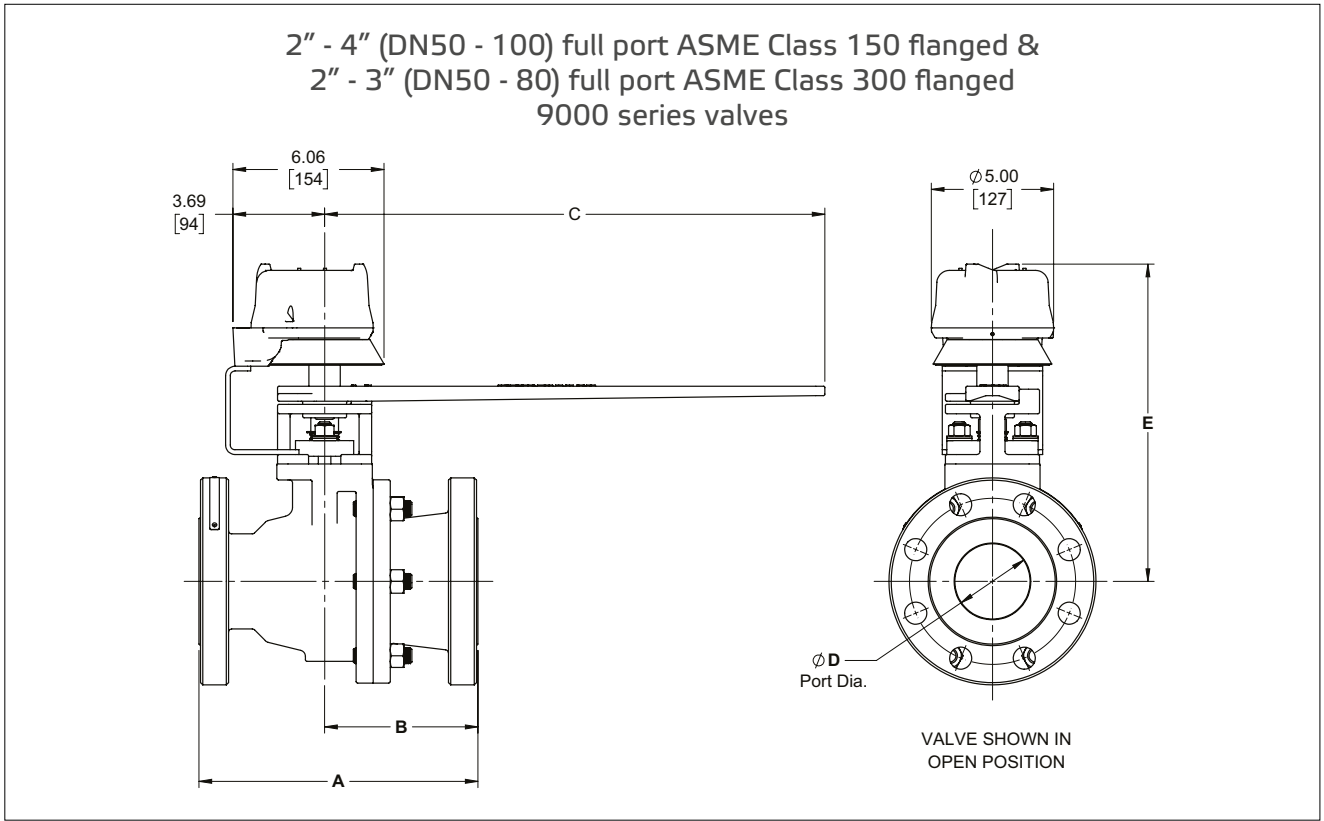
9300, ASME Class 300, flanged - millimeters						
Size (DN)	A1	B	C	D	E**	Weight (kg)
15	140	49	127	13	192	10
20	152	56	165	22	200	13
25	165	56	165	25	203	15
40	191	67	203	38	224	17

**= Add 54mm for QX4V limit switch models

Dimensions



Dimensions



7150, ASME Class 150, flanged - inches						
Size (inches)	A1	B	C	D	E**	Weight (lbs)
3	8.00	3.75	14.00	2.31	10.67	59
4	9.00	4.39	14.00	3.00	11.16	83
6	10.50	4.95	19.94	4.00	13.40	144

**= Add 2.12" for QX4V limit switch models

7150, ASME Class 150, flanged - millimeters						
Size (DN)	A1	B	C	D	E**	Weight (kg)
80	203	95	356	59	271	27
100	229	112	356	76	283	38
150	267	126	506	102	340	65

**= Add 54mm for QX4V limit switch models

7300, ASME Class 300, flanged - inches								
Size (inches)	A1	B	C/C1	C2	C3 OPTION	D	E**	Weight (lbs)
3	11.12	3.75	14.00	-	-	2.31	10.67	79
4	12.00	4.39	19.94	-	-	3.00	12.58	116
6	15.88	4.95	30.00	15.00	27.50	4.00	15.64	214

**= Add 2.12" for QX4V limit switch models

7300, ASME Class 300, flanged - millimeters								
Size (DN)	A1	B	C/C1	C2	C3 OPTION	D	E**	Weight (kg)
80	282	95	356	-	-	59	271	36
100	305	112	506	-	-	76	320	53
150	403	126	762	381	699	102	397	67

**= Add 54mm for QX4V limit switch models

730S (Short pattern), ASME Class 300, flanged - inches								
Size (inches)	A2	B	C/C1	C2	C3 OPTION	D	E**	Weight (lbs)
3	8.00	3.75	14.00	-	-	2.31	10.67	72
4	9.00	4.39	19.94	-	-	3.00	12.58	107
6	-	4.95	30.00	15.00	27.50	4.00	15.64	180

**= Add 2.12" for QX4V limit switch models

730S (Short pattern), ASME Class 300, flanged - millimeters								
Size (DN)	A2	B	C/C1	C2	C3 OPTION	D	E**	Weight (kg)
80	203	95	356	-	-	59	271	33
100	229	112	506	-	-	76	320	49
150	-	126	762	381	699	102	397	82

**= Add 54mm for QX4V limit switch models

9150, ASME Class 150, flanged - inches						
Size (inches)	A	B	C	D	E**	Weight (lbs)
2	7.00	4.14	14.00	2.00	10.32	49
3	8.00	4.26	14.00	3.00	11.13	69
4	9.00	4.50	19.94	4.00	13.40	109

**= Add 2.12" for QX4V limit switch models

9150, ASME Class 150, flanged - millimeters						
Size (DN)	A	B	C	D	E**	Weight (kg)
50	178	105	356	51	262	22
80	203	108	356	76	283	31
100	229	114	506	102	340	49

**= Add 54mm for QX4V limit switch models

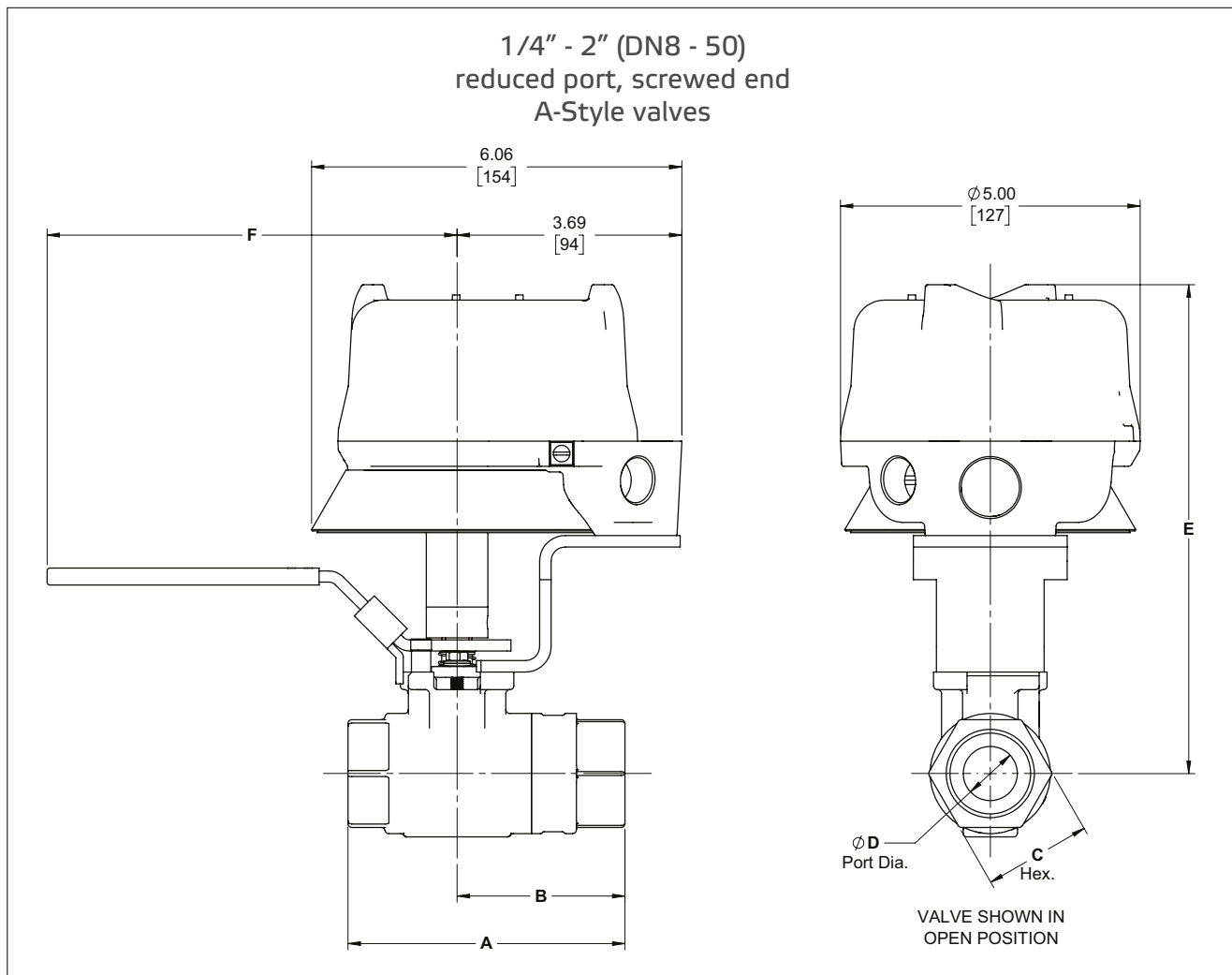
9300, ASME Class 300, flanged - inches								
Size (inches)	A	B	C/C1	C2	C3 OPTION	D	E**	Weight (lbs)
2	8.50	4.89	14.00	-	-	2.00	10.32	57
3	11.12	6.11	19.94	-	-	3.00	12.58	97
4	12.00	6.86	30.00	15.00	27.50	4.00	15.64	156

**= Add 2.12" for QX4V limit switch models

9300, ASME Class 300, flanged - millimeters								
Size (DN)	A	B	C/C1	C2	C3 OPTION	D	E**	Weight (kg)
50	216	124	356	-	-	51	262	26
80	282	155	506	-	-	76	320	44
100	305	174	762	381	699	102	397	71

**= Add 54mm for QX4V limit switch models

Dimensions



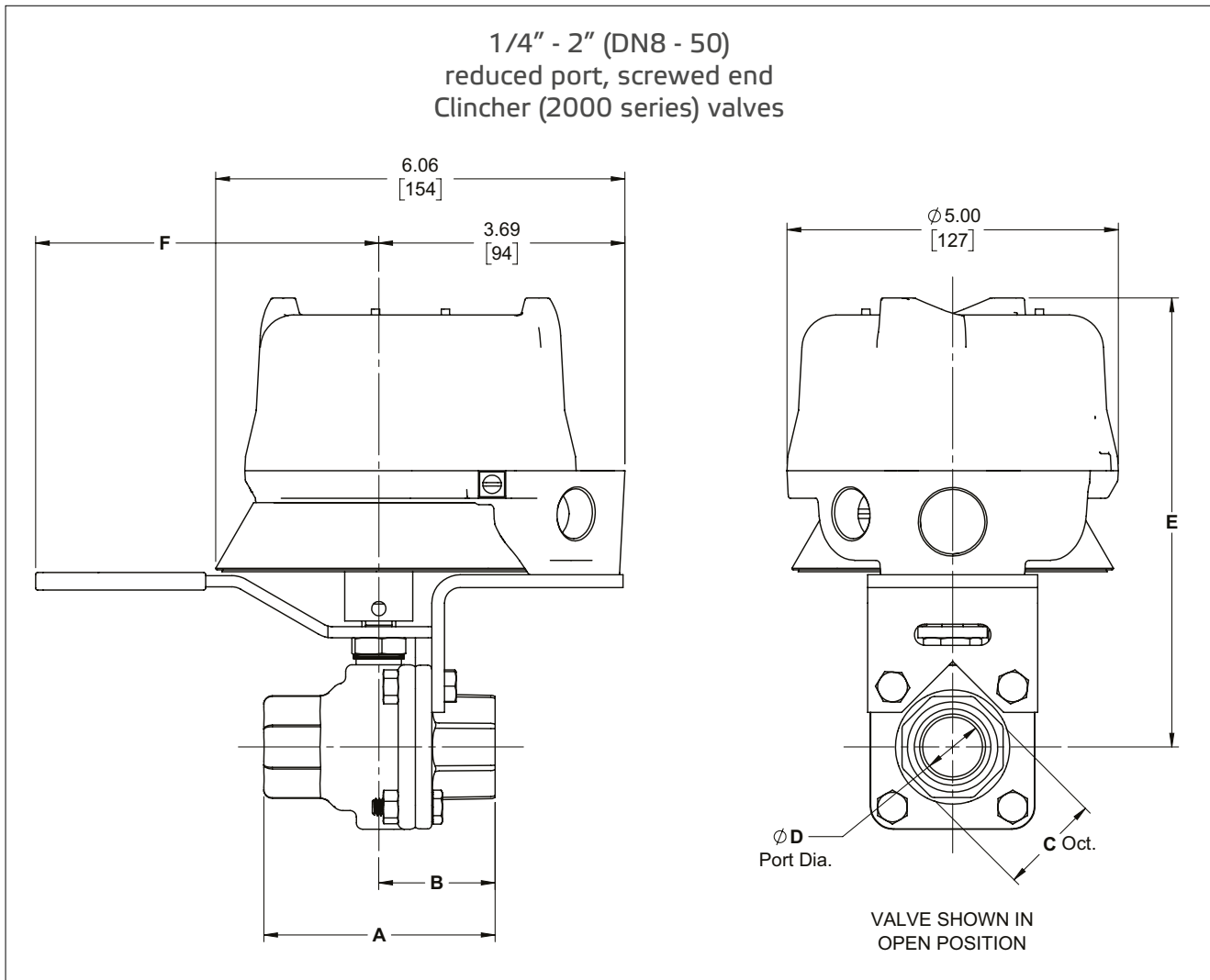
A-Style, reduced port, screwed end - inches							
Size (inches)	A	B	C	D	E**	F	Weight (lbs)
1/4	2.94	1.66	1.13	0.43	7.54	5.00	16
3/8	2.94	1.66	1.13	0.43	7.54	5.00	16
1/2	3.44	2.16	1.13	0.50	7.54	5.00	17
3/4	3.81	2.31	1.38	0.69	7.70	5.00	18
1	4.50	2.73	1.75	0.88	7.87	6.50	19
1-1/4	4.44	2.44	2.00	1.00	8.00	6.50	19
1-1/2	4.56	2.37	2.31	1.25	8.63	8.00	20
2	5.00	2.25	2.81	1.50	8.81	8.00	22

**= Add 2.12" for QX4V limit switch models

A-Style, reduced port, screwed end - millimeters							
Size (DN)	A	B	C	D	E**	F	Weight (kg)
8	75	42	29	11	191	127	7
10	75	42	29	11	191	127	7
15	87	55	29	13	191	127	7
20	97	59	35	18	196	127	8
25	114	69	44	22	200	165	8
32	113	62	51	25	203	165	9
40	116	60	59	32	219	203	9
50	127	57	71	38	224	203	10

**= Add 54mm for QX4V limit switch models

Dimensions



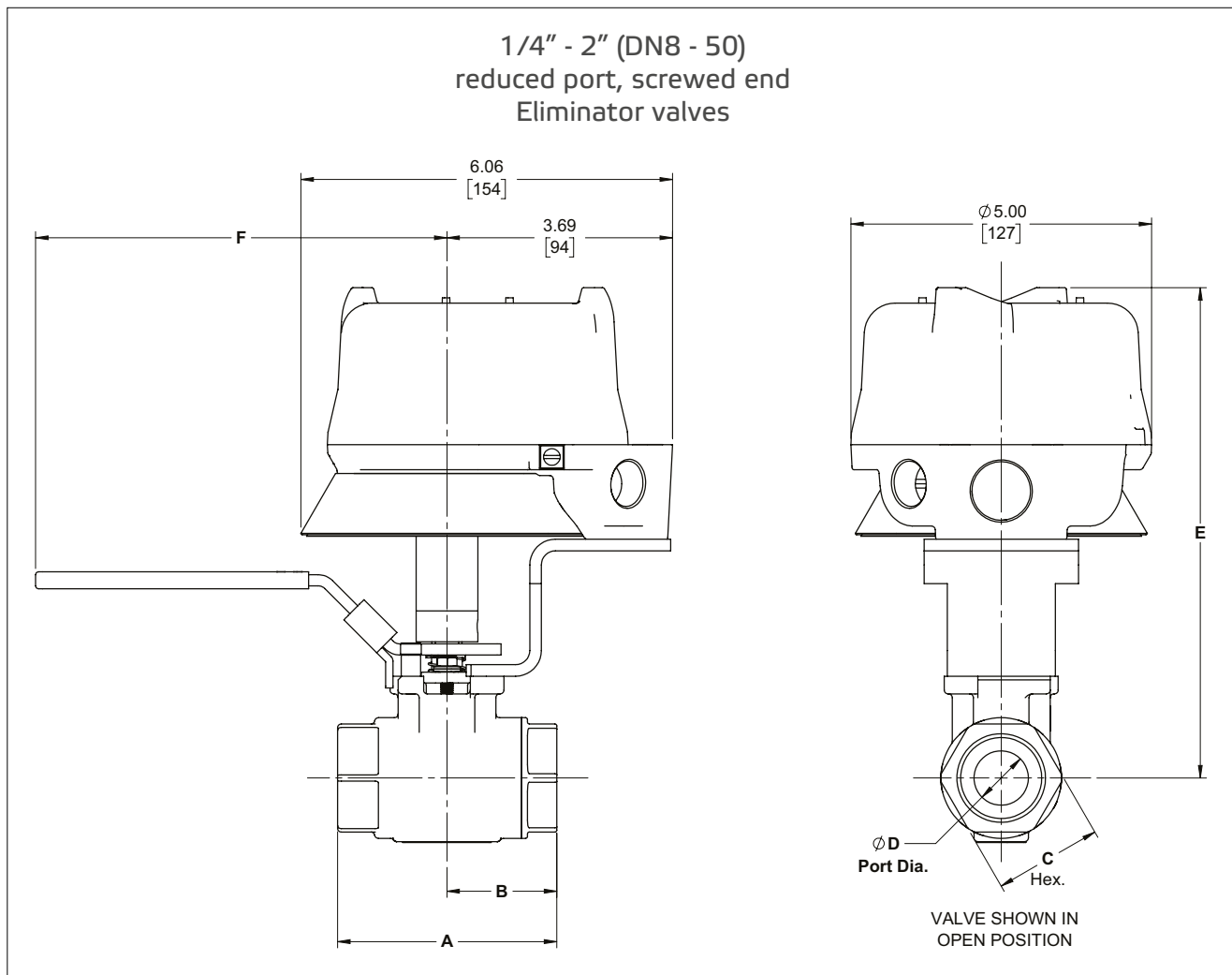
Clincher (2000 series), reduced port, screwed end - inches							
Size (inches)	A	B	C	D	E**	F	Weight (lbs)
1/2	2.50	1.25	1.03	0.50	6.14	4.00	16
3/4	2.81	1.41	1.25	0.69	6.26	4.00	16
1	3.41	1.70	1.50	0.88	6.54	5.00	17
1-1/4	3.75	1.88	1.88	1.00	6.72	5.00	18
1-1/2	4.03	2.02	2.13	1.25	6.89	6.00	20
2	4.38	2.19	2.63	1.50	7.33	6.00	22

**= Add 2.12" for QX4V limit switch models

Clincher (2000 Series), reduced port, screwed end - millimeters							
Size (DN)	A	B	C	D	E**	F	Weight (kg)
15	64	32	26	13	156	102	7
20	71	36	32	18	159	102	7
25	87	43	38	22	166	127	8
32	95	48	48	25	171	127	8
40	102	51	54	32	175	152	9
50	111	56	67	38	186	152	10

**= Add 54mm for QX4V limit switch models

Dimensions



Eliminator, reduced port, screwed end - inches							
Size (inches)	A	B	C	D	E**	F	Weight (lbs)
1/4	2.16	1.13	1.13	0.43	7.54	5.00	16
3/8	2.16	1.13	1.13	0.43	7.54	5.00	16
1/2	2.62	1.34	1.13	0.50	7.54	5.00	16
3/4	3.00	1.50	1.38	0.69	7.70	5.00	17
1	3.55	1.78	1.75	0.88	7.87	6.50	18
1-1/4	4.00	2.00	2.00	1.00	8.00	6.50	19
1-1/2	4.38	2.19	2.31	1.25	8.63	8.00	21
2	5.50	2.75	2.81	1.50	8.81	8.00	23

**= Add 2.12" for QX4V limit switch models

Eliminator, reduced port, screwed end - millimeters							
Size (DN)	A	B	C	D	E**	F	Weight (kg)
8	55	29	29	11	191	127	7
10	55	29	29	11	191	127	7
15	67	34	29	13	191	127	7
20	76	38	35	18	196	127	8
25	90	45	44	22	200	165	8
32	102	51	51	25	203	165	9
40	111	56	59	32	219	203	9
50	140	70	71	38	224	203	10

**= Add 54mm for QX4V limit switch models

How to order Jamesbury supervisory cocks

The Supervisory Cock figure designation is made up of numbers and letters that describe all features of the available variations of the cock. Coding is as follows:

1	2	3	4	5	6
5	7	E	3	X	B

Note: When ordering 1/2" (DN 15) Series 4000 valves always use the style codes shown above for standard port types even though this size is full port design.

Example: A 1-1/2" (DN 40) Supervisory Cock in Series 4000 standard port screwed end design in carbon steel with 316 stainless steel trim, with two supervisory double pole double throw limit switches, Xtreme seats and ANSI rating has the designation Figure 1051-57E3XB.

1	Size	1	2	3	4	5	6	7	8	9
	inches	1/2	3/4	1	1-1/4	1-1/2	2	3*	4*	6*
	DN	15	20	25	32	40	50	80	100	150

2	Body style
1	A-Style std. port screwed end 1/4"-2" (DN8-50)
2	Series 7150 ASME class 150 flanged 1/2"-6" (DN 15-150)
5	Series 2000, Clincher std port screwed end 1/2"-2" (DN15-150)
7	Series 4000 std. port screwed end 1/2"-2" (DN 15-50)
8	Series 4000 full port screwed end 1/2"-1 1/2" (DN 15-40)
9	Series 4000 std. port socket weld 1/2"-2" (DN 15-50)
0	Series 4000 full port socket weld 1/2"-1 1/2" (DN 15-40)
C	Type 730S ASME Class 300 flanged 1/2"-6" (DN 15-150)
D	Type 7300 ASME Class 300 flanged 1/2"-6" (DN 15-150)
E	Eliminator 1/2"-2" (DN 15-20)
F	Series 9150 ASME Class 150 flanged 1/2"-4" (DN15-100)
G	Series 9300 ASME Class 300 flanged 1/2"-4" (DN15-100)

3	Body trim materials
D	316 Stainless steel
E	Carbon steel with 316 stainless trim
F	Carbon steel with 316 stainless steel ball & 17-4 PH stem
G	316 Stainless steel body & ball with 17-4 PH stem

4	Switch arrangement
1	SPDT-2 supervisory QX2VE02SRA
2	SPDT-1 supervisory, 1 free, QX2VE02SRA
C	DPDT-2 supervisory, QX4VE02SRA-MET52
D	DPDT-1 supervisory, 1 free, QX4VE02SRA-MET52
6	SPDT-1 supervisory, 1 free, hermetically sealed QX2HE02SRA
7	SPDT-2 supervisory hermetically sealed QX2HE02SRA

5	Seat material
T	PTFE **
X	Xtreme
R	Delrin ††

6	Special service
S	Standard - CWP rated 4000 series or Eliminator
B	ASME 4000 Series or Eliminator

* Available in flanged design only

** 3" (DN 80) & larger 7000 Series only

†† Use only for 4000 Series

Valmet Flow Control Oy

Vanha Porvoontie 229, 01380 Vantaa, Finland.

Tel. +358 10 417 5000.

www.valmet.com/flowcontrol

Subject to change without prior notice.

Neles, Neles Easyflow, Jamesbury, Stonel, Valvcon and Flowrox, and certain other trademarks, are either registered trademarks or trademarks of Valmet Oyj or its subsidiaries in the United States and/or in other countries.

