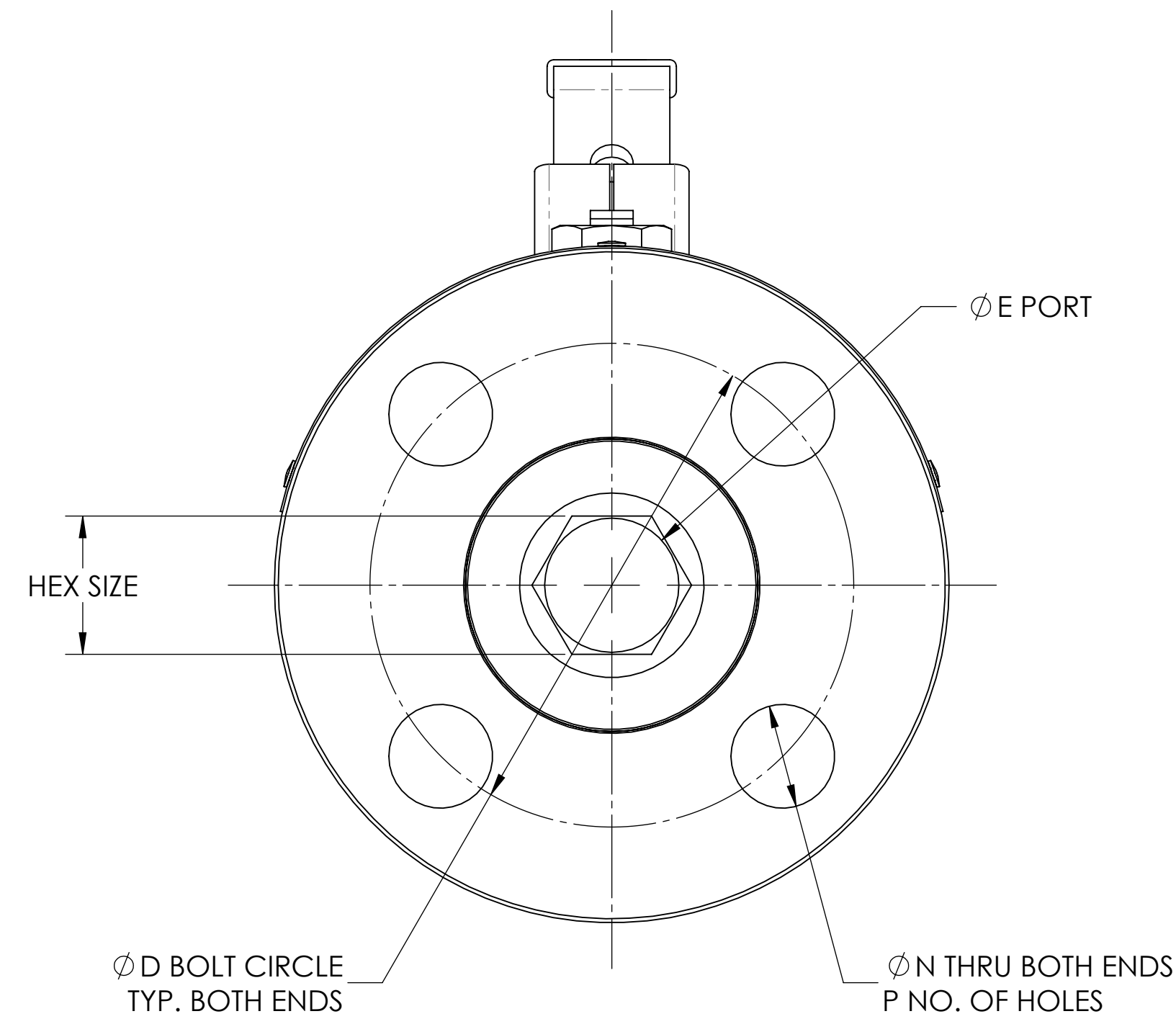
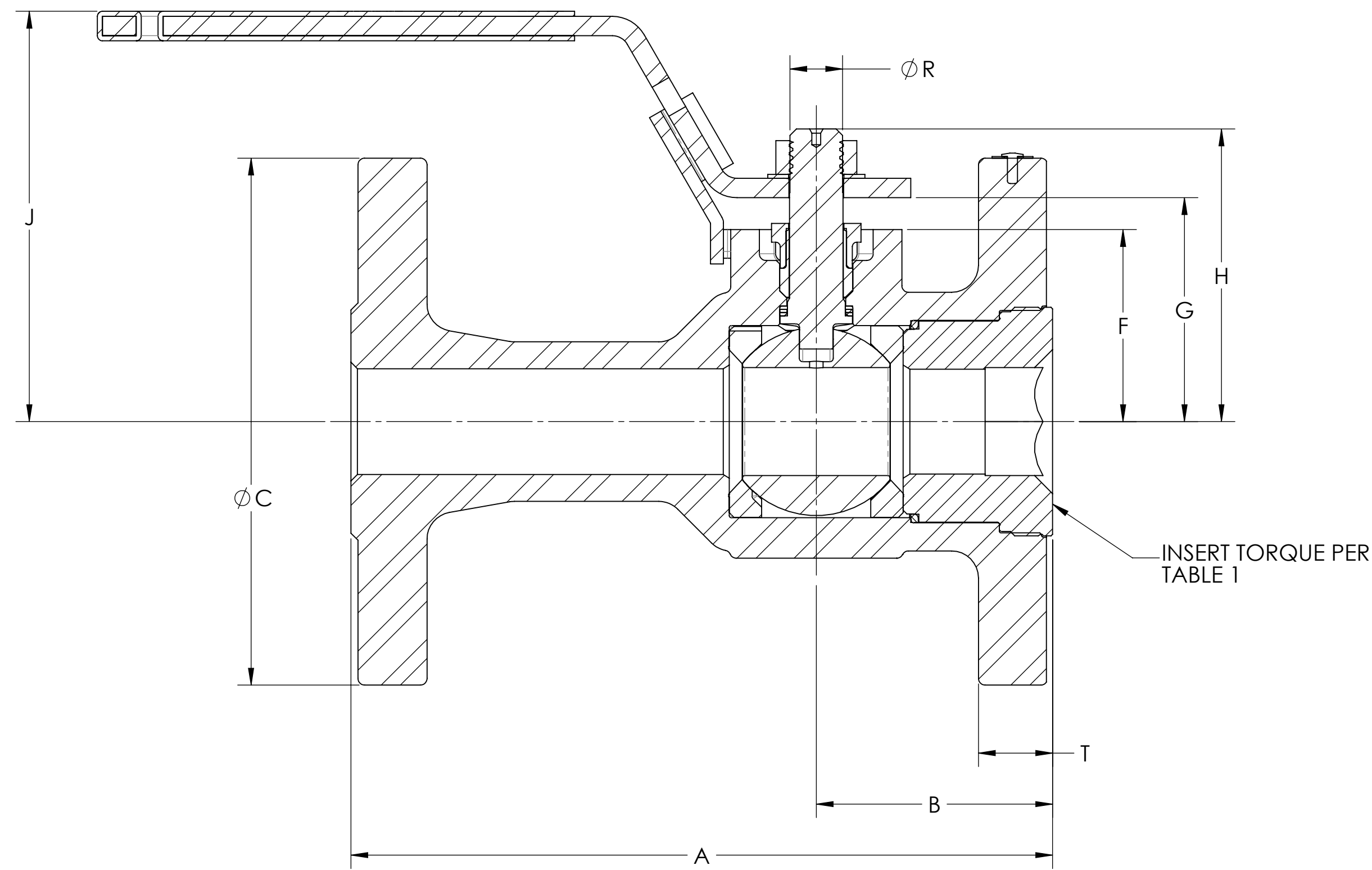
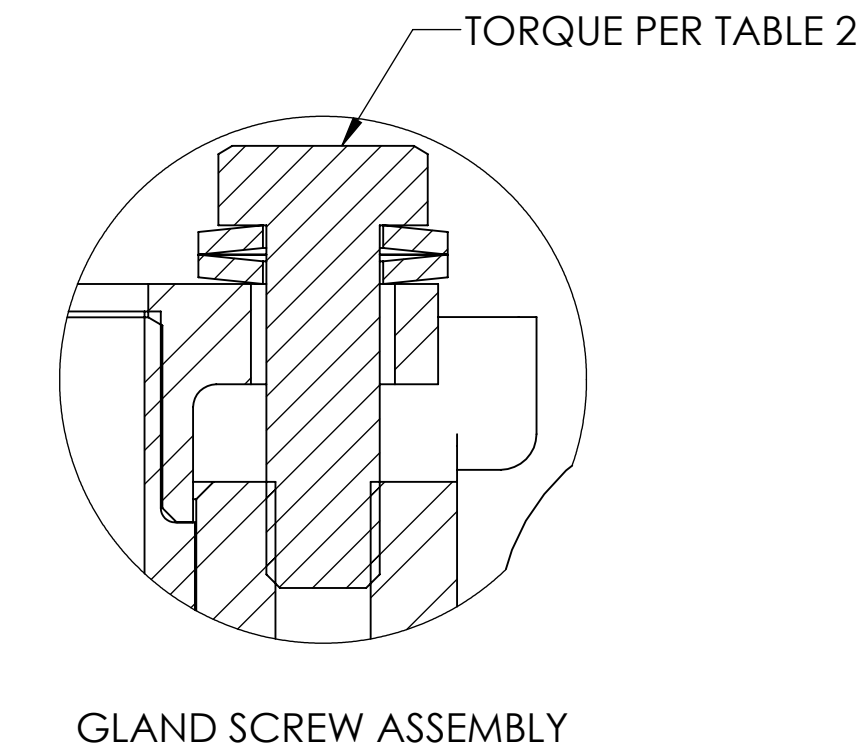
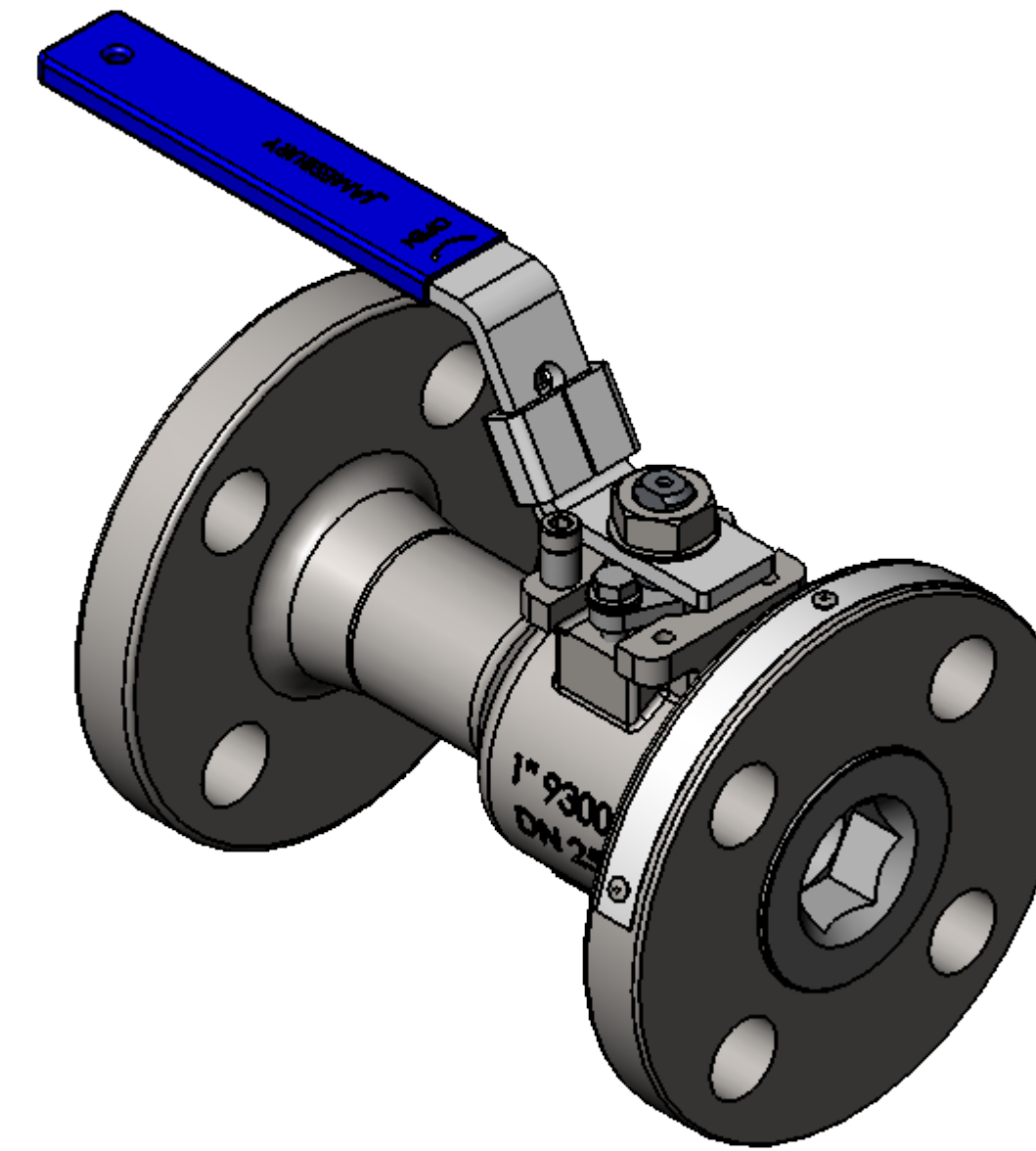
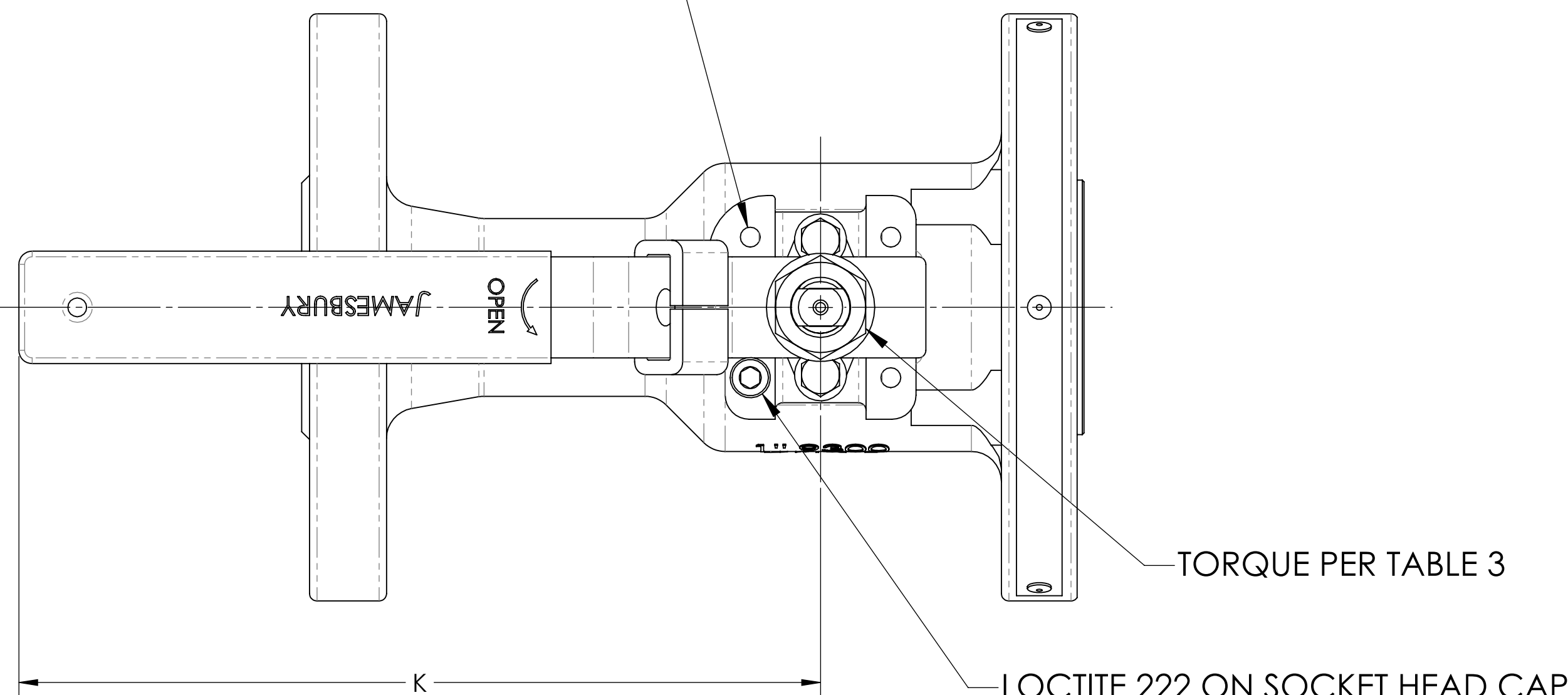


WE NELES ARE THE OWNERS OF THIS DOCUMENT AND ALL INFORMATION CONTAINED HEREIN WHICH MUST NOT, WITHOUT OUR WRITTEN PERMISSION, BE COPIED, GIVEN TO A THIRD PARTY OR IN ANY OTHER WAY USED AGAINST OUR COPYRIGHT. © 2021 NELES

NOMINAL DIMENSIONS - INCHES

VALVE SIZE	A	B	C	D	E	F	G	H	J	K	L	M	N	P	R	S	T	HEX. SIZE	ISO BONNET
1/2"	5.500	1.940	3.750	2.620	0.500	1.060	1.280	1.630	3.400	5.000	M5	1.420	0.620	4	0.310	0.180	0.560	0.500	F03
3/4"	6.000	2.190	4.630	3.250	0.880	1.650	1.990	2.580	3.670	6.500	M5	1.650	0.750	4	0.500	0.310	0.630	0.880	F04
1"	6.500	2.190	4.880	3.500	1.000	1.780	2.120	2.710	3.800	6.500	M5	1.650	0.750	4	0.500	0.310	0.690	1.000	F04
1 1/2"	7.500	2.640	6.130	4.500	1.500	2.260	2.730	3.490	4.460	8.000	M6	1.970	0.880	4	0.620	0.370	0.810	1.500	F05

4 HOLES  $\phi L$  ON A  $\phi M$  BOLT CIRCLE



- NOTES:
- TAG ATTACHMENT PER JS-115.
  - FOR INSTALLATION, MAINTENANCE AND OPERATION INSTRUCTIONS SEE IMO-214

ECN NO. 46078	REVISION DESCRIPTION UPDATED DRAWING TO LATEST NELES TEMPLATE.
------------------	---

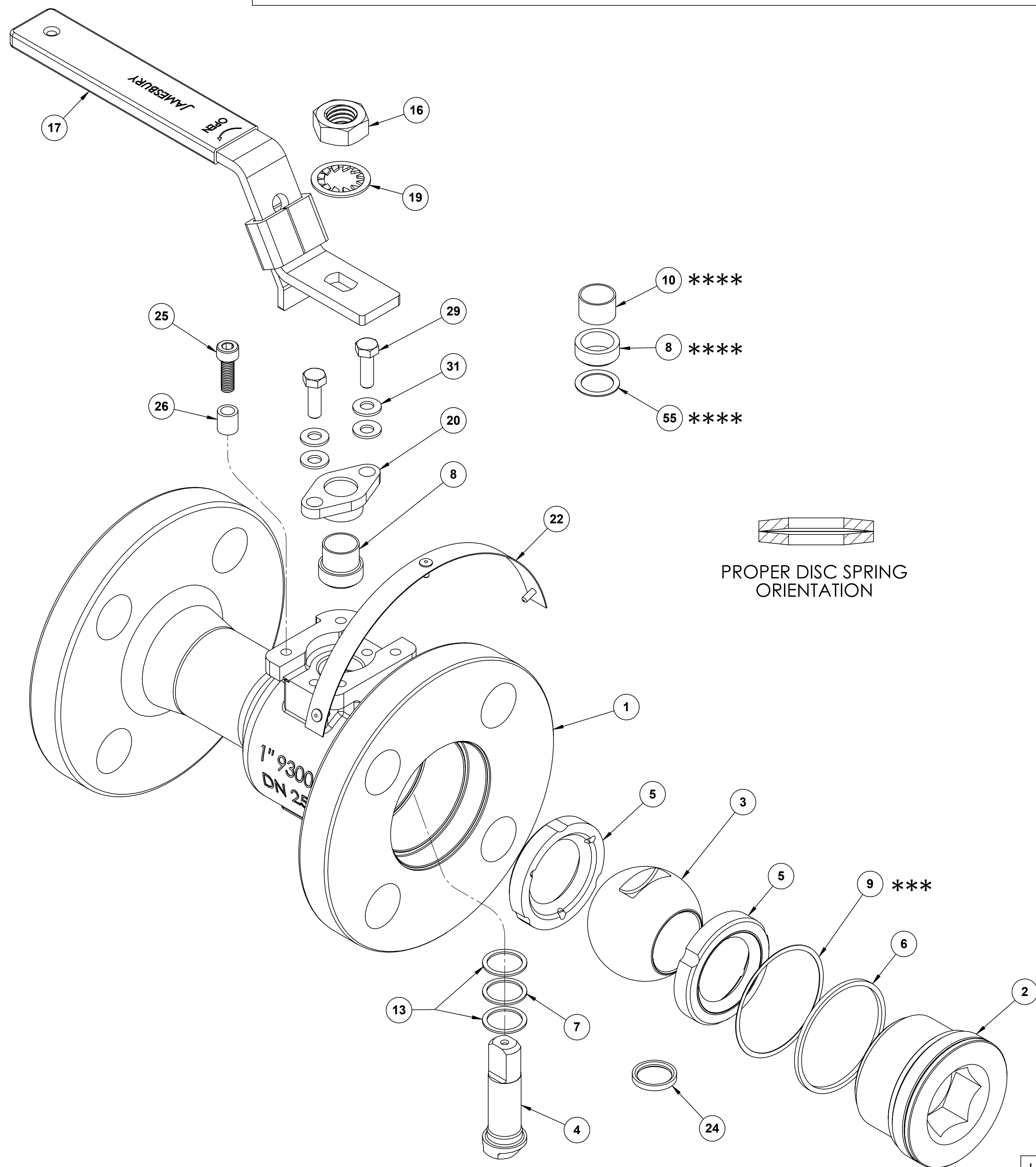
UNLESS OTHERWISE NOTED DIMENSIONS IN INCHES.  
DIMENSIONING, TOLERANCING, AND DRAWING INTERPRETATION IS IN ACCORDANCE WITH ASME Y14.5M  
ANGLES =  $\pm 5^\circ$  FINISH =  $\nabla 250$   
REMOVE SHARP EDGES AND CORNERS TO 0.02-0.03 RADIUS OR CHAMFER

SPECIFICATIONS TO BE USED IN CONJUNCTION WITH THIS DRAWING:  
JSA-01, JST-02, JSA-17, JSA-34, JS-115

DRAWN M. LOVEJOY	REVIEWED
APPROVED M. NEWELL	DATE 16 FEB 2021

SIZE D V16.04	MAKE FROM	WEIGHT	VOLUME cm <sup>3</sup>	DRAWN S. BRZOZOWSKI	NELES
ASSEMBLY 1/2-1 1/2 SERIES 9300 VALVE				REVIEWED	
				APPROVED D. ESCOBAR	DATE 3/23/2013
				DRAWING NO. 5447	REV. G
SOLIDWORKS				LOCATION SHREWSBURY - USA	RESTRICTED
				SHEET	1 OF 2

WE NELES ARE THE OWNERS OF THIS DOCUMENT AND ALL INFORMATION CONTAINED HEREIN WHICH MUST NOT, WITHOUT OUR WRITTEN PERMISSION, BE COPIED, GIVEN TO A THIRD PARTY OR IN ANY OTHER WAY USED AGAINST OUR COPYRIGHT. © 2021 NELES



ITEM	DESCRIPTION	QTY.
1	BODY	1
2	INSERT	1
3	BALL	1
4	STEM	1
5	SEAT	2
6	BODY SEAL	1
7	SECONDARY STEM SEAL	1
8	STEM SEAL	1
9	SUPPORT RING	1
10	UPPER STEM BEARING	1
13	STEM BEARING	2
16	HANDLE NUT	1
17	HANDLE	1
19	SHAKEPROOF WASHER	1
20	COMPRESSION PLATE	1
22	IDENTIFICATION TAG	1
24	STEM BEARING NON-FIRETITE	1
25	SOCKET HEAD CAP SCREW	1
26	SPACER	1
29	HEX. HEAD CAP SCREW	2
31	DISC SPRING	4
55	ANTI-EXTRUSION RING	1
* FIRETITE VALVES ONLY		
** NON-FIRETITE VALVES ONLY		
*** USE ITEM 9 FOR 1" AND 1 1/2" GRAPHITE SEALS ONLY		
**** USED FOR GRAPHITE UPPER STEM SEALS ONLY		

TABLE 1	
INSERT TORQUES	
VALVE SIZE	TORQUE LB. - FT. (±10%)
1/2"	100
3/4"	150
1"	200
1 1/2"	350

TABLE 2	
HEX. HEAD CAP SCREW TORQUE	
VALVE SIZE	TORQUE LB. - IN.
1/2"	15
3/4" & 1"	20
1-1/2"	32

TABLE 3	
HANDLE NUT TORQUE	
VALVE SIZE	TORQUE LB. - FT.
1/2"	7-11
3/4" & 1"	19-26
1-1/2"	29-36

UNLESS OTHERWISE NOTED  
DIMENSIONS IN INCHES.  
DIMENSIONING, TOLERANCING, AND DRAWING  
INTERPRETATION IS IN ACCORDANCE WITH  
ASME Y14.5M  
ANGLES = ±5° FINISH = 250/  
REMOVE SHARP EDGES AND CORNERS TO  
0.02-0.03 RADIUS OR CHAMFER

SPECIFICATIONS TO BE  
USED IN CONJUNCTION  
WITH THIS DRAWING:  
JSA-01, JST-02,  
JSA-17, JSA-34,  
JS-115

SIZE <b>D</b> V1.6.04	MAKE FROM	WEIGHT	VOLUME cm <sup>3</sup>	DRAWN S. BRZOZOWSKI	<b>NELES</b>
ASSEMBLY 1/2-1 1/2 SERIES 9300 VALVE				REVIEWED	
APPROVED M. NEWELL			DATE 16 FEB 2021	APPROVED D. ESCOBAR	DATE 3/23/2013
SOLIDWORKS				DRAWING NO. 5447	REV. G
LOCATION SHREWSBURY - USA			RESTRICTED	SHEET 2 OF 2	

ECN NO. 46078	REVISION DESCRIPTION UPDATED DRAWING TO LATEST NELES TEMPLATE.
------------------	---