

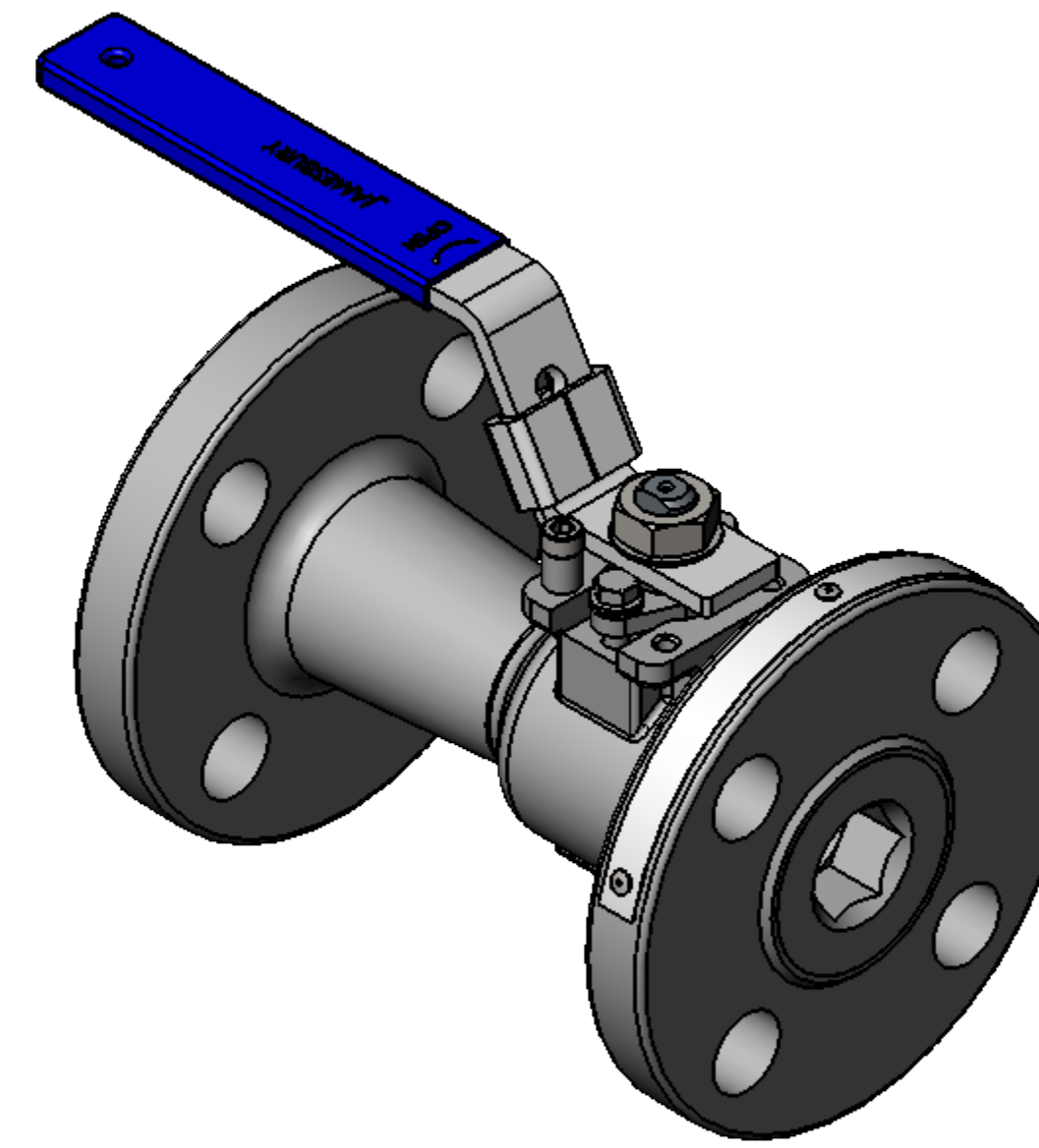
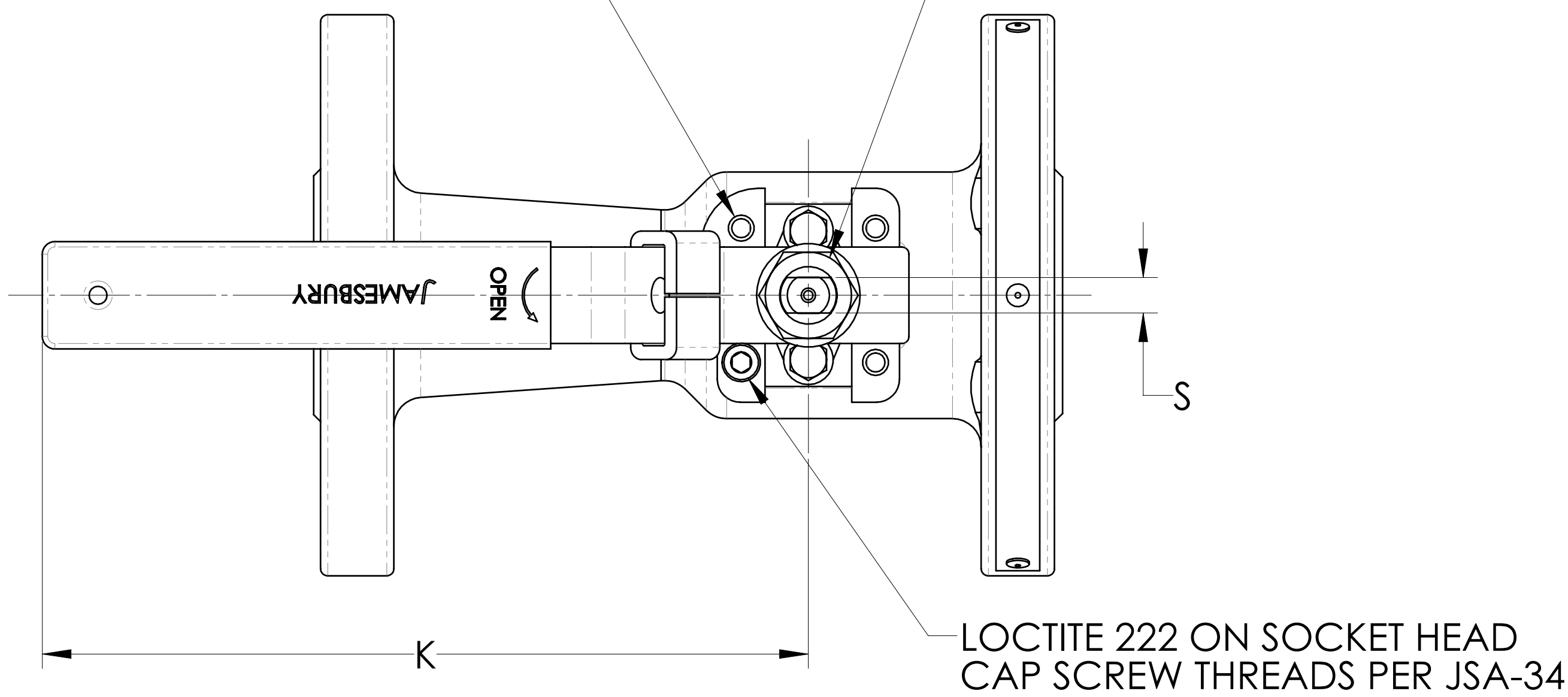
WE NELES ARE THE OWNERS OF THIS DOCUMENT AND ALL INFORMATION CONTAINED HEREIN WHICH MUST NOT, WITHOUT OUR WRITTEN PERMISSION, BE COPIED, GIVEN TO A THIRD PARTY OR IN ANY OTHER WAY USED AGAINST OUR COPYRIGHT. © 2020 NELES

NOMINAL DIMENSIONS - INCHES

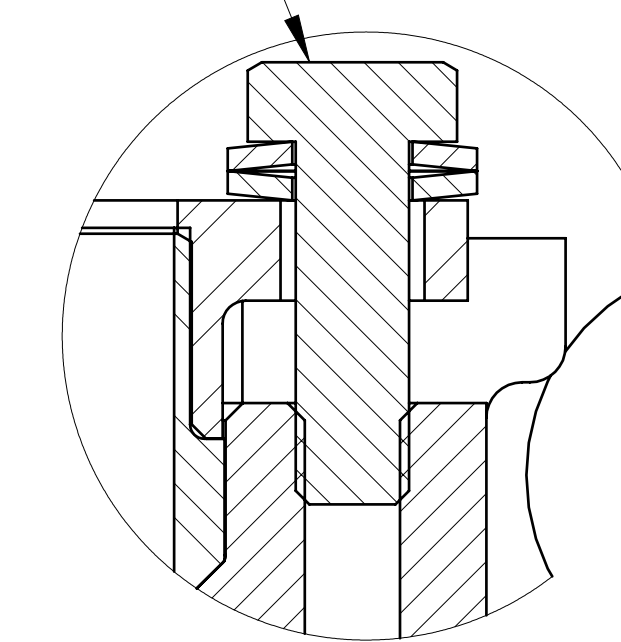
VALVE SIZE	A ₁	A ₂	B	C	D	E	F	G	H	J	K	L	M	N	P	R	S	T	HEX. SIZE	ISO BONNET
1/2"	4.250	5.500	1.940	3.750	2.620	0.500	1.060	1.280	1.630	3.400	5.000	M5	1.420	0.620	4	0.310	0.180	0.560	0.500	F03
3/4"	4.630	6.000	2.000	4.620	3.250	0.690	1.220	1.430	1.790	3.550	5.000	M5	1.420	0.750	4	0.310	0.180	0.620	0.750	F03
1"	5.000	6.500	2.190	4.880	3.500	0.880	1.650	1.990	2.580	3.670	6.500	M5	1.650	0.750	4	0.500	0.310	0.690	0.880	F04
1 1/2"	6.500	7.500	2.650	6.120	4.500	1.250	2.080	2.540	3.300	4.270	8.000	M6	1.970	0.880	4	0.620	0.370	0.810	1.250	F05
2"	7.000	8.500	2.640	6.500	5.000	1.500	2.260	2.730	3.490	4.460	8.000	M6	1.970	0.750	8	0.620	0.370	0.880	1.500	F05

4 HOLES ϕ L ON A ϕ M BOLT CIRCLE

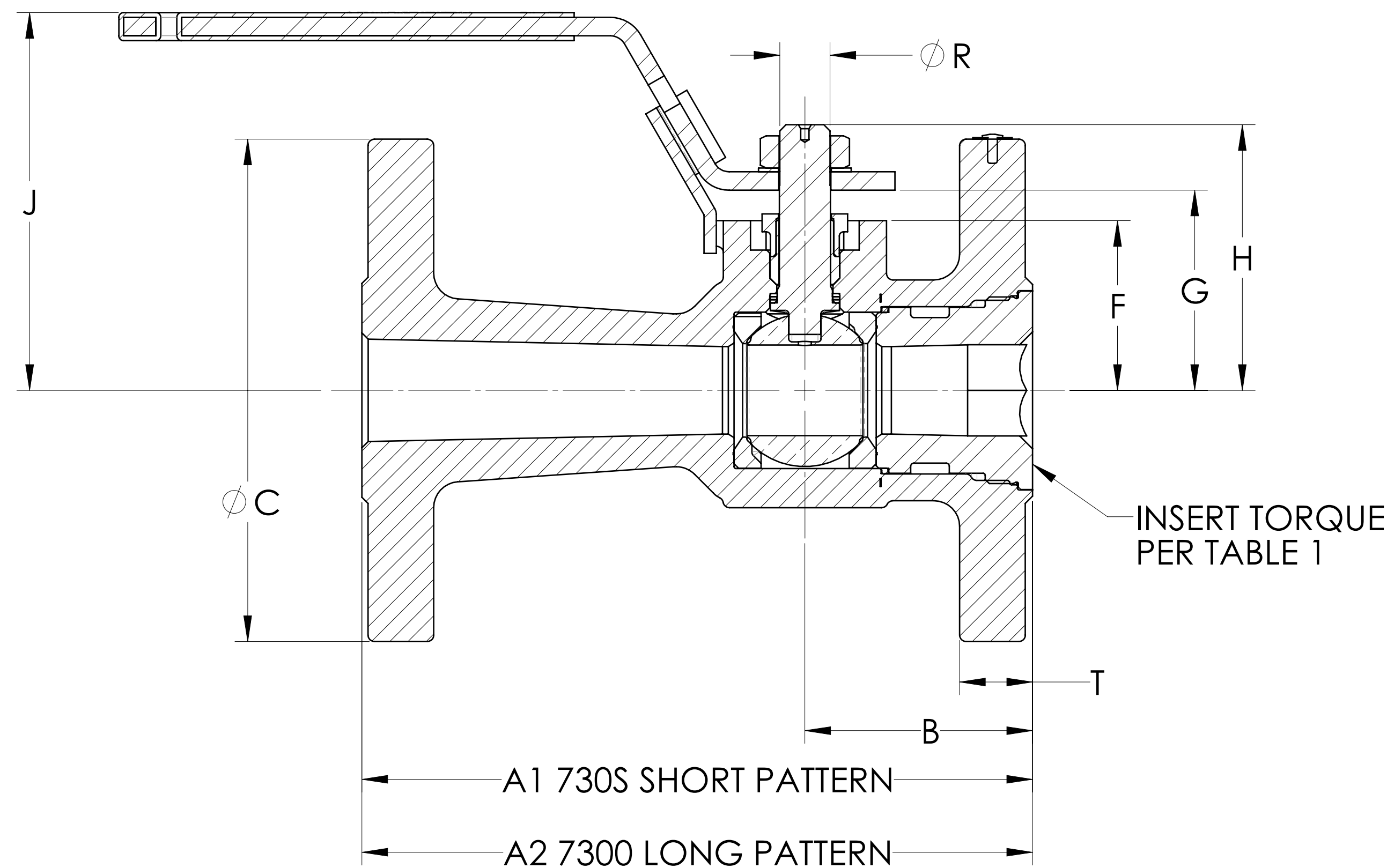
TORQUE PER TABLE 3



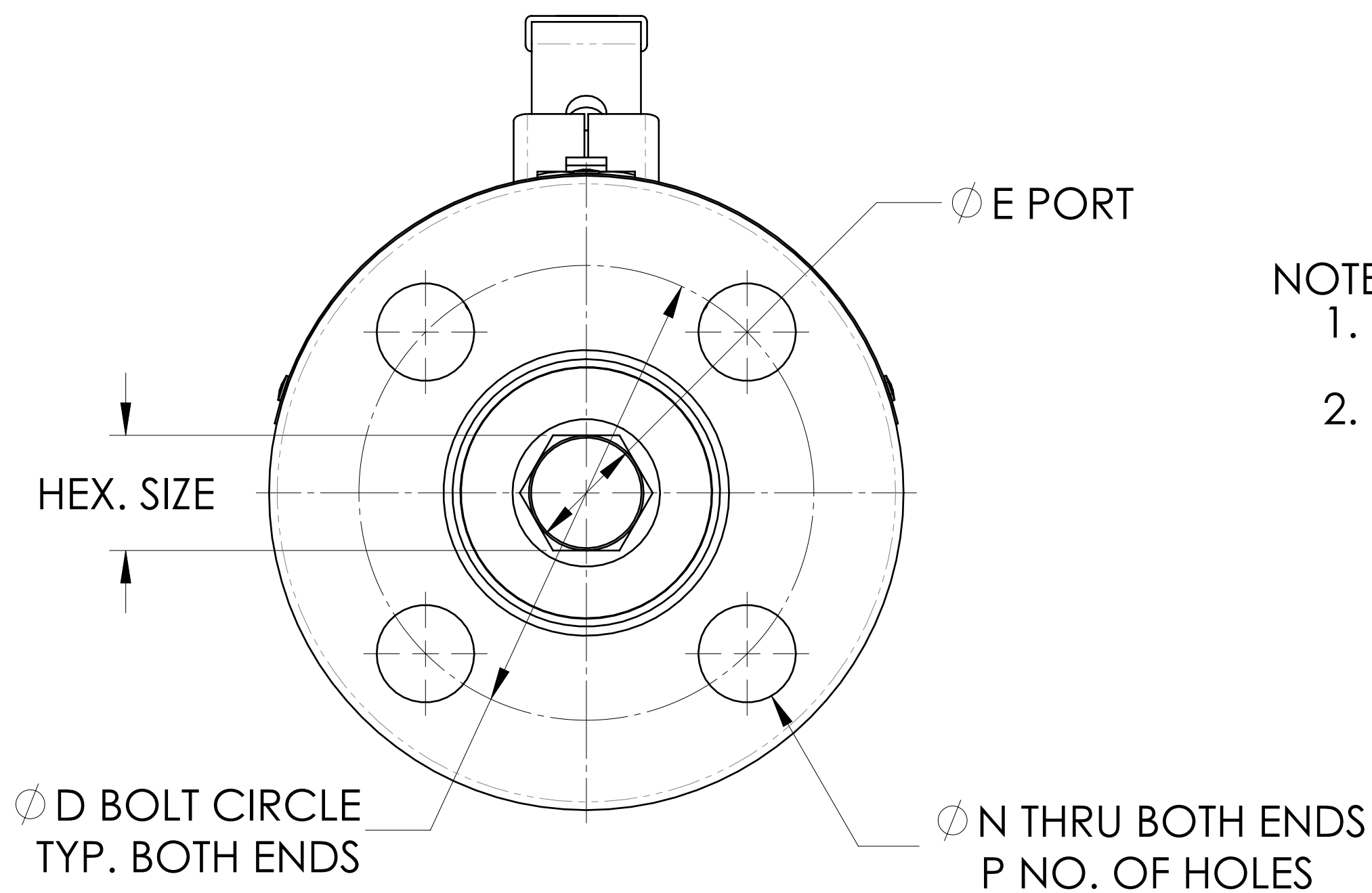
TORQUE PER TABLE 2



GLAND SCREW ASSEMBLY



INSERT TORQUE PER TABLE 1



- NOTES:
 1. TAG ATTACHMENT PER JS-115.
 2. FOR INSTALLATION MAINTENANCE AND OPERATING INSTRUCTIONS SEE IMO-214.

UNLESS OTHERWISE NOTED DIMENSIONS IN INCHES. DIMENSIONING, TOLERANCING, AND DRAWING INTERPRETATION IS IN ACCORDANCE WITH ASME Y14.5M. ANGLES = $\pm 5^\circ$ FINISH = 250 REMOVE SHARP EDGES AND CORNERS TO 0.02-0.03 RADIUS OR CHAMFER

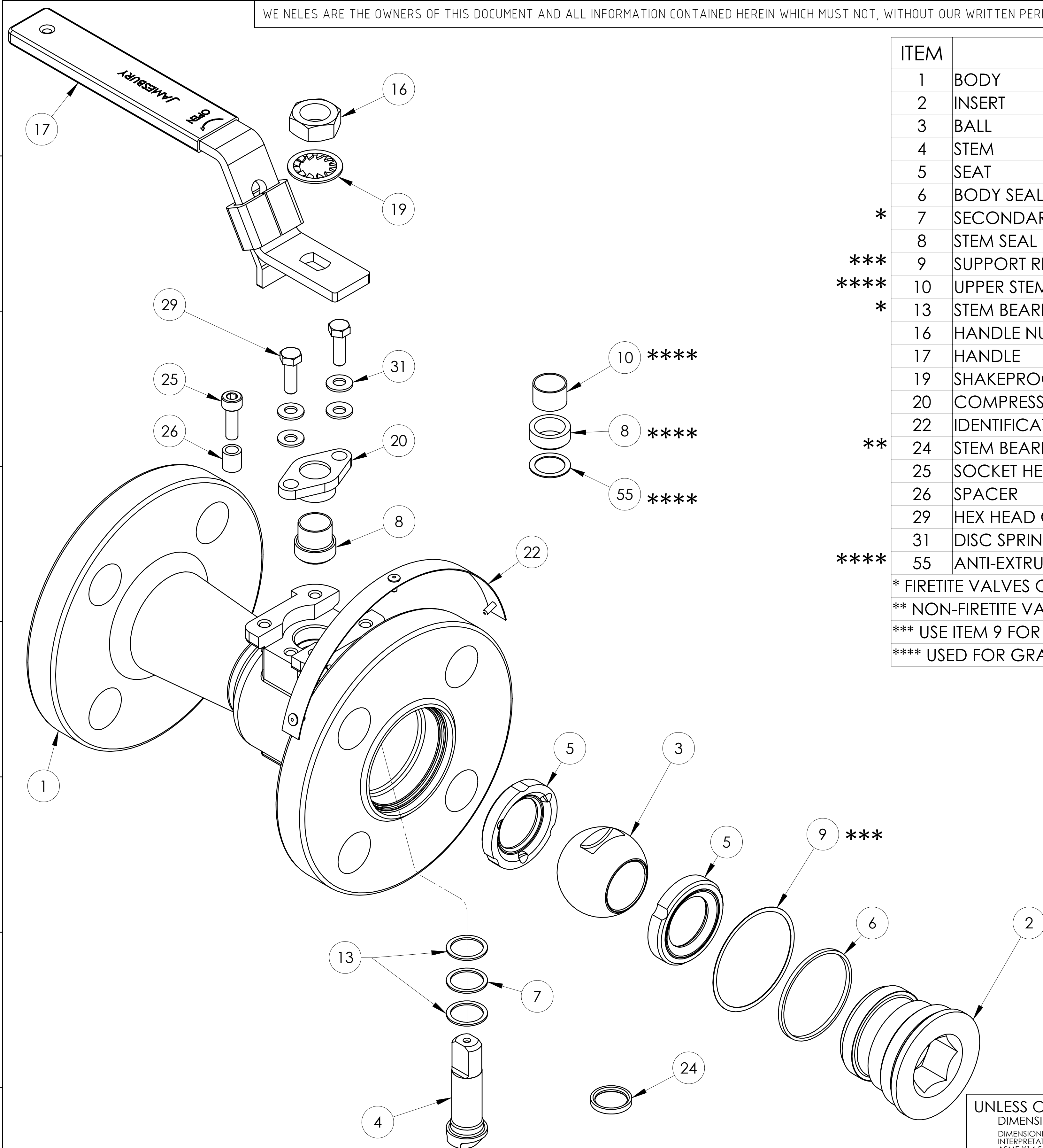
SPECIFICATIONS TO BE USED IN CONJUNCTION WITH THIS DRAWING: JSA-01, JST-02, JSA-17, JSA-34, JS-115

SIZE	D	V16.04	MAKE FROM	WEIGHT	VOLUME	cm ³	DRAWN	M. WINQUIST	REVIEWED	NELES
ASSEMBLY DRAWING							APPROVED	D. ESCOBAR	DATE	6/25/2003
1/2-2 SERIES 730S & 7300 VALVE							DRAWING NO.	5445	REV.	G
SOLIDWORKS							LOCATION	SHREWSBURY - USA	RESTRICTED	SHEET
									1 OF 2	

ECN NO.	46078	REVISION DESCRIPTION	UPDATE DRAWING TO LATEST NELES TEMPLATE.
---------	-------	----------------------	--

DRAWN	M. LOVEJOY	REVIEWED	
APPROVED	M. NEWELL	DATE	08 JAN 2021

WE NELES ARE THE OWNERS OF THIS DOCUMENT AND ALL INFORMATION CONTAINED HEREIN WHICH MUST NOT, WITHOUT OUR WRITTEN PERMISSION, BE COPIED, GIVEN TO A THIRD PARTY OR IN ANY OTHER WAY USED AGAINST OUR COPYRIGHT. © 2020 NELES



ITEM	DESCRIPTION	QTY.
1	BODY	1
2	INSERT	1
3	BALL	1
4	STEM	1
5	SEAT	2
6	BODY SEAL	1
* 7	SECONDARY STEM SEAL	1
8	STEM SEAL	1
*** 9	SUPPORT RING	1
**** 10	UPPER STEM BEARING	1
* 13	STEM BEARING	2
16	HANDLE NUT	1
17	HANDLE	1
19	SHAKEPROOF WASHER	1
20	COMPRESSION PLATE	1
22	IDENTIFICATION TAG	1
** 24	STEM BEARING NON-FIRETITE	1
25	SOCKET HEAD CAP SCREW	1
26	SPACER	1
29	HEX HEAD CAP SCREW	2
31	DISC SPRING	4
**** 55	ANTI-EXTRUSION RING	1
* FIRETITE VALVES ONLY		
** NON-FIRETITE VALVES ONLY		
*** USE ITEM 9 FOR 1 1/2" AND 2" GRAPHITE SEALS ONLY		
**** USED FOR GRAPHITE UPPER SEAL ONLY		

TABLE 1
INSERT TORQUES

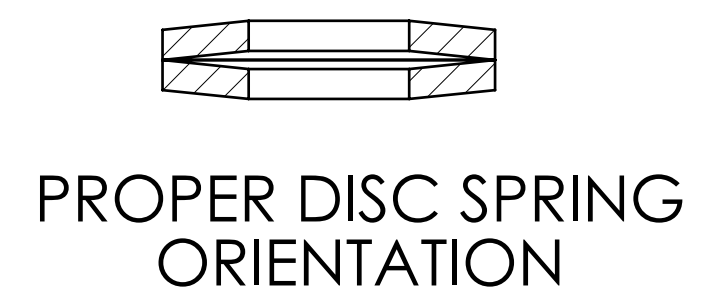
VALVE SIZE	TORQUE LB. - FT. (±10%)
1/2"	100
3/4"	100
1"	150
1 1/2"	250
2"	350

TABEL 2
HEX. HEAD CAP SCREW TORQUE

VALVE SIZE	TORQUE LB. - IN.
1/2" & 3/4"	15
1"	20
1-1/2" & 2"	32

TABLE 3
HANDLE NUT TORQUE

VALVE SIZE	TORQUE LB. - FT.
1/2" & 3/4"	7-11
1"	19-26
1-1/2" & 2"	29-36



ECN NO. 46078
REVISION DESCRIPTION
UPDATE DRAWING TO LATEST NELES TEMPLATE.

UNLESS OTHERWISE NOTED
DIMENSIONS IN INCHES.
DIMENSIONING, TOLERANCING, AND DRAWING
INTERPRETATION IS IN ACCORDANCE WITH
ASME Y14.5M
ANGLES = ±5° FINISH = 250/
REMOVE SHARP EDGES AND CORNERS TO
0.02-0.03 RADIUS OR CHAMFER

DRAWN M. LOVEJOY
APPROVED M. NEWELL
REVIEWED
DATE 08 JAN 2021

SPECIFICATIONS TO BE
USED IN CONJUNCTION
WITH THIS DRAWING:
JSA-01, JST-02,
JSA-17, JSA-34,
JS-115

SIZE D V1.6.04	MAKE FROM	WEIGHT	VOLUME cm ³	DRAWN M. WINQUIST REVIEWED	NELES
ASSEMBLY DRAWING 1/2-2 SERIES 730S & 7300 VALVE				APPROVED D. ESCOBAR DRAWING NO. 5445	
SOLIDWORKS		LOCATION SHREWSBURY - USA	RESTRICTED		SHEET 2 OF 2