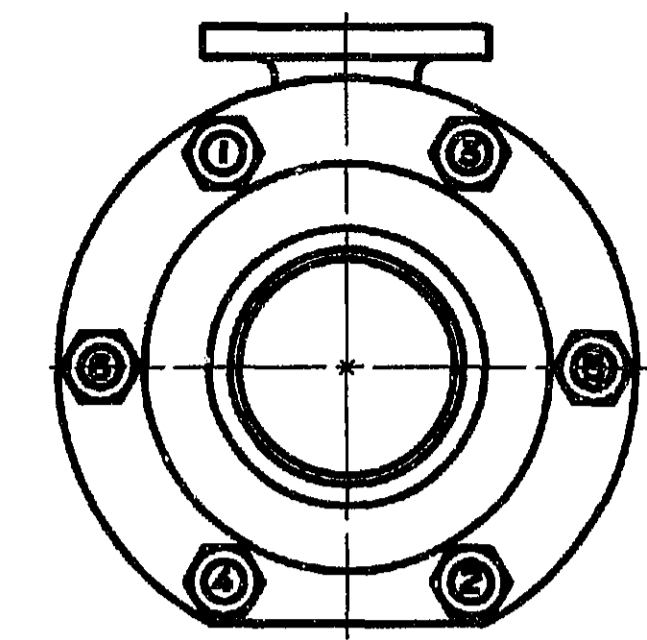
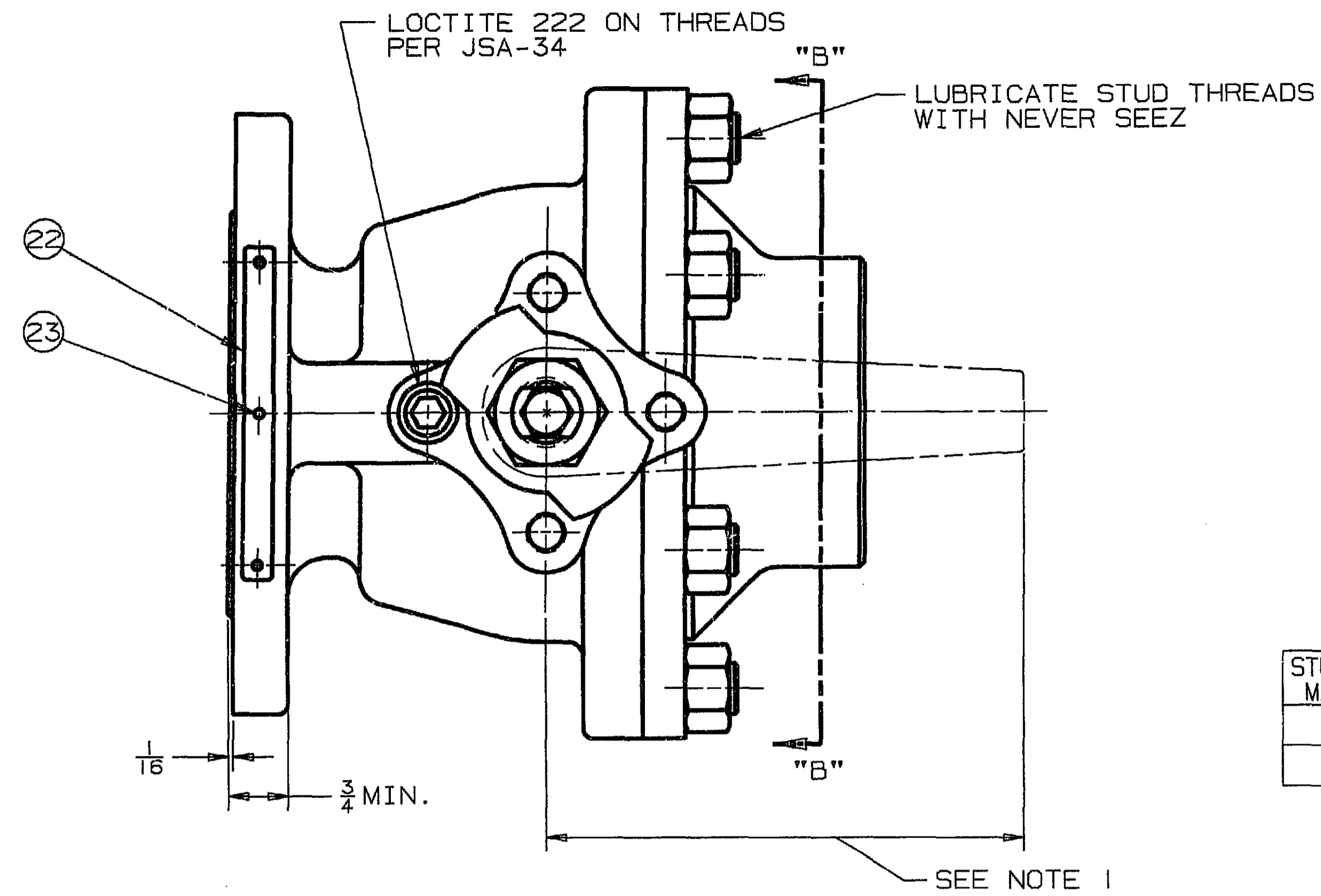


SUPERSEDED BY		SUPERSEDED BY	
LET	ECN	REVISION	DR. APPVD. DATE
---	13974	WAS: P11501	RRH GRW 8/28/91
A	14029	SEE ECN FOR CHANGES	EVA GW 20CT91

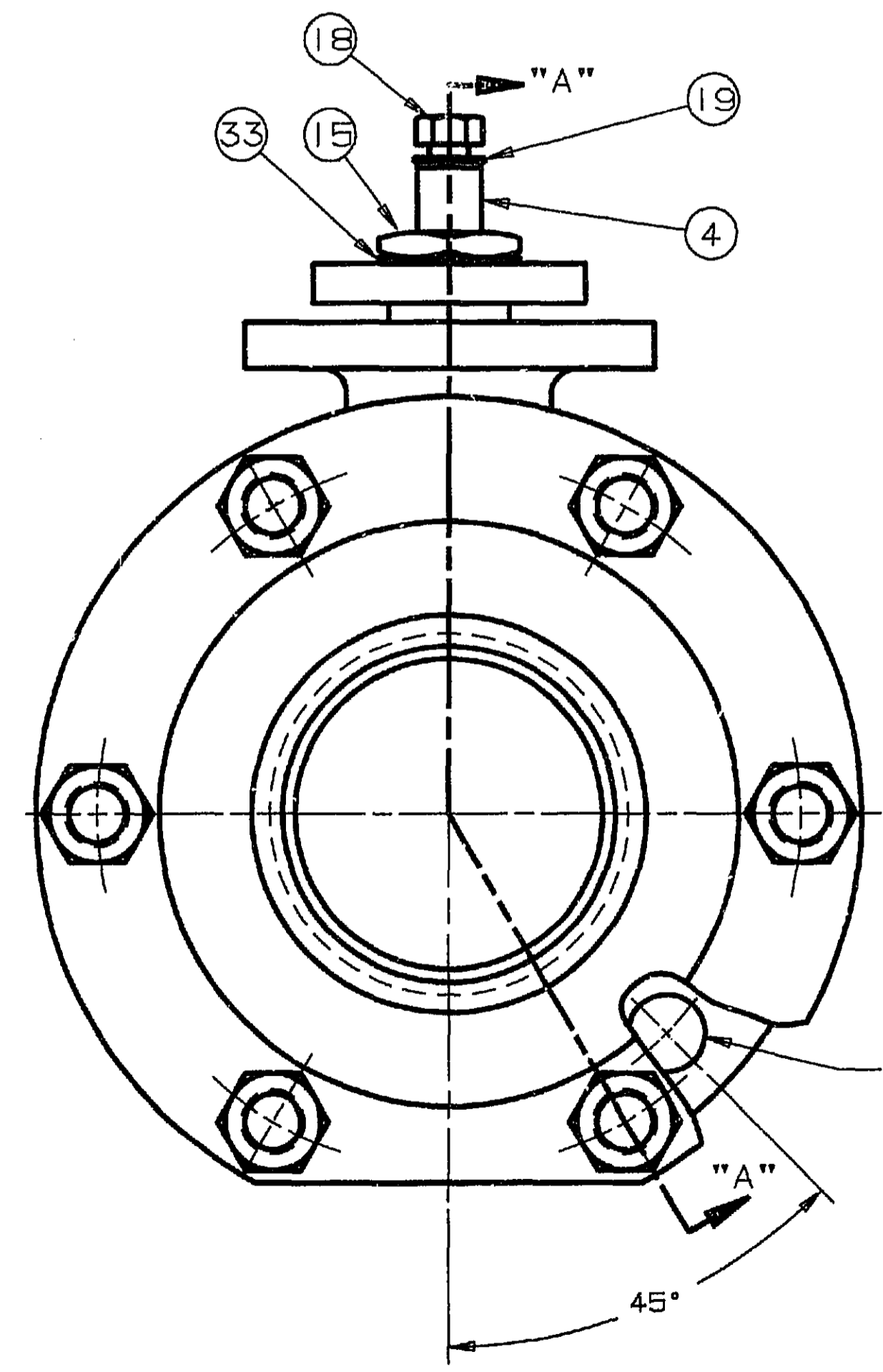
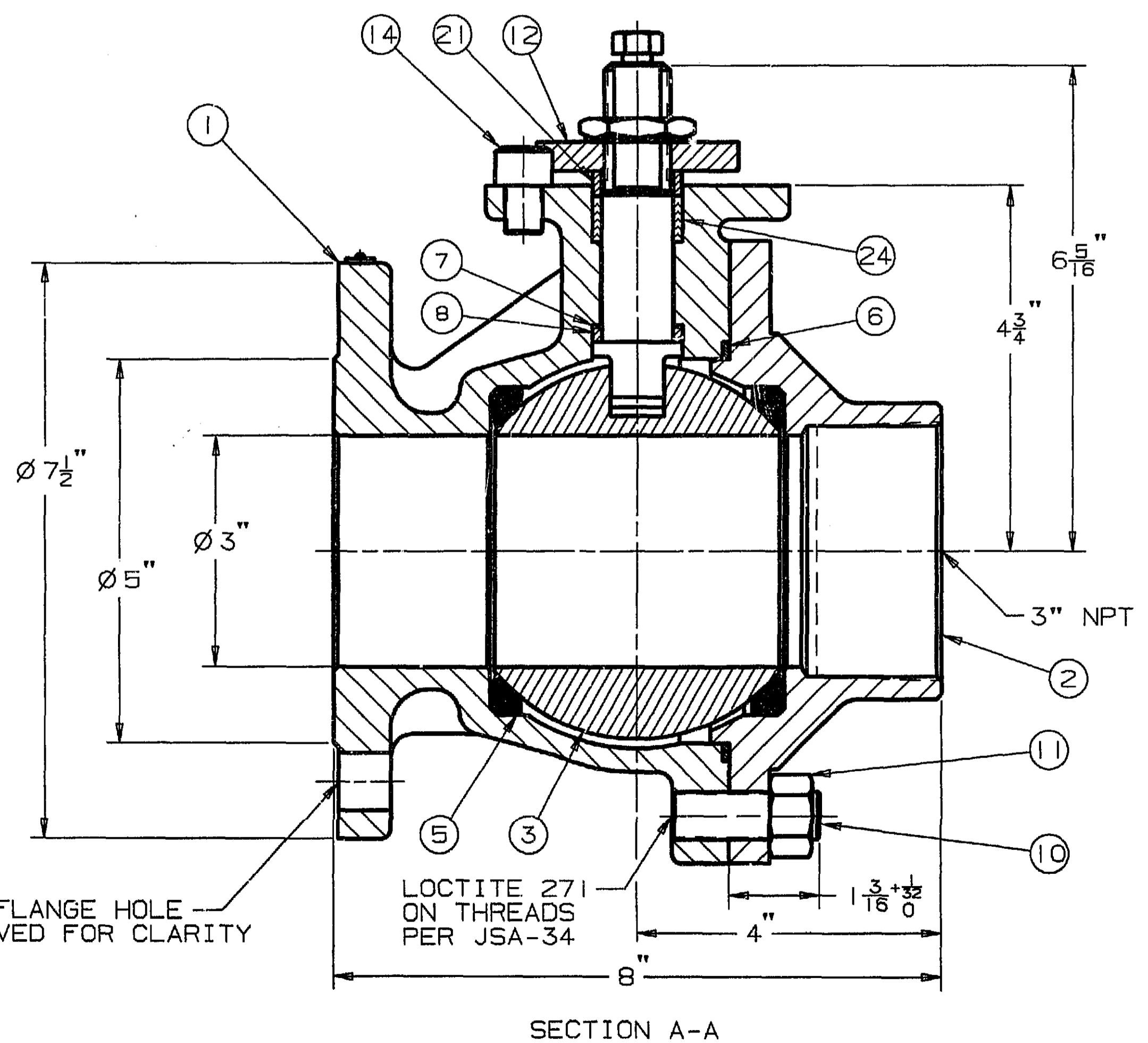


NOTE:

1. 9" OR 6" LONG HANDLE LENGTHS AVAILABLE UPON REQUEST.
 9" = 012-0771-36
 6" = 012-0772-36

STUD & NUT MATERIAL	STUD IDENT.	NUT IDENT.	ASSEMBLY TORQUE FT-LBS
-20	B7	2H OR 2HB	160-190
-31	B8, B8C OR B8T	B8, B8C, B8B OR B8T	155-180

ITEM	PART NAME
1.	BODY
2.	BODY CAP
3.	BALL
4.	STEM
5.	SEAT
6.	BODY SEAL
7.	SECONDARY STEM SEAL
8.	LOWER STEM SEAL
10.	BODY STUD
11.	NUT
12.	INDICATOR STOP
14.	SOC. HD. CAP SCREW
15.	STEM NUT
18.	HEX HD. CAP SCREW
19.	LOCKWASHER
21.	COMPRESSION RING
22.	IDENT. TAG
23.	DRIVE SCREW/RIVET
24.	TOP STEM SEAL
33.	LOCKWASHER



COMPUTER GENERATED

FOR JW USE ONLY

THIS DRAWING AND ALL INFORMATION CONTAINED HEREIN ARE THE PROPERTY OF THE NELES-JAMESBURY CORP AND ARE NOT TO BE USED EXCEPT AS AUTHORIZED BY WRITTEN PERMISSION.

UNLESS OTHERWISE NOTED DIMENSIONING, TOLERANCING, & DRAWING INTERPRETATION IS IN ACCORDANCE WITH ANSI Y14.5-1982 & DOD-STD-100.

ALL MACHINE SURFACES TO BE 250

BREAK ALL SHARP CORNERS 1/64 MAX REMOVE ALL BURRS

MAT'L. CODE	MATERIAL TYPE	MATERIAL SPECIFICATIONS	IDENT. MARK
JSA-01			
JSA-10			
JSA-17			
JSA-34			
JST-02			

NELES-JAMESBURY SPECIFICATIONS APPLICABLE ON THIS DWG.

MAKE FROM PART NO. DO NOT SCALE DRAWING

TITLE: ASSEMBLY

3"6RFT RAILROAD VALVE

DR. DATE: RRH 28AUG91

APPVD. DATE: GRW 28AUG91

NELES-JAMESBURY WORCESTER, MASS. U.S.A.

D 5126