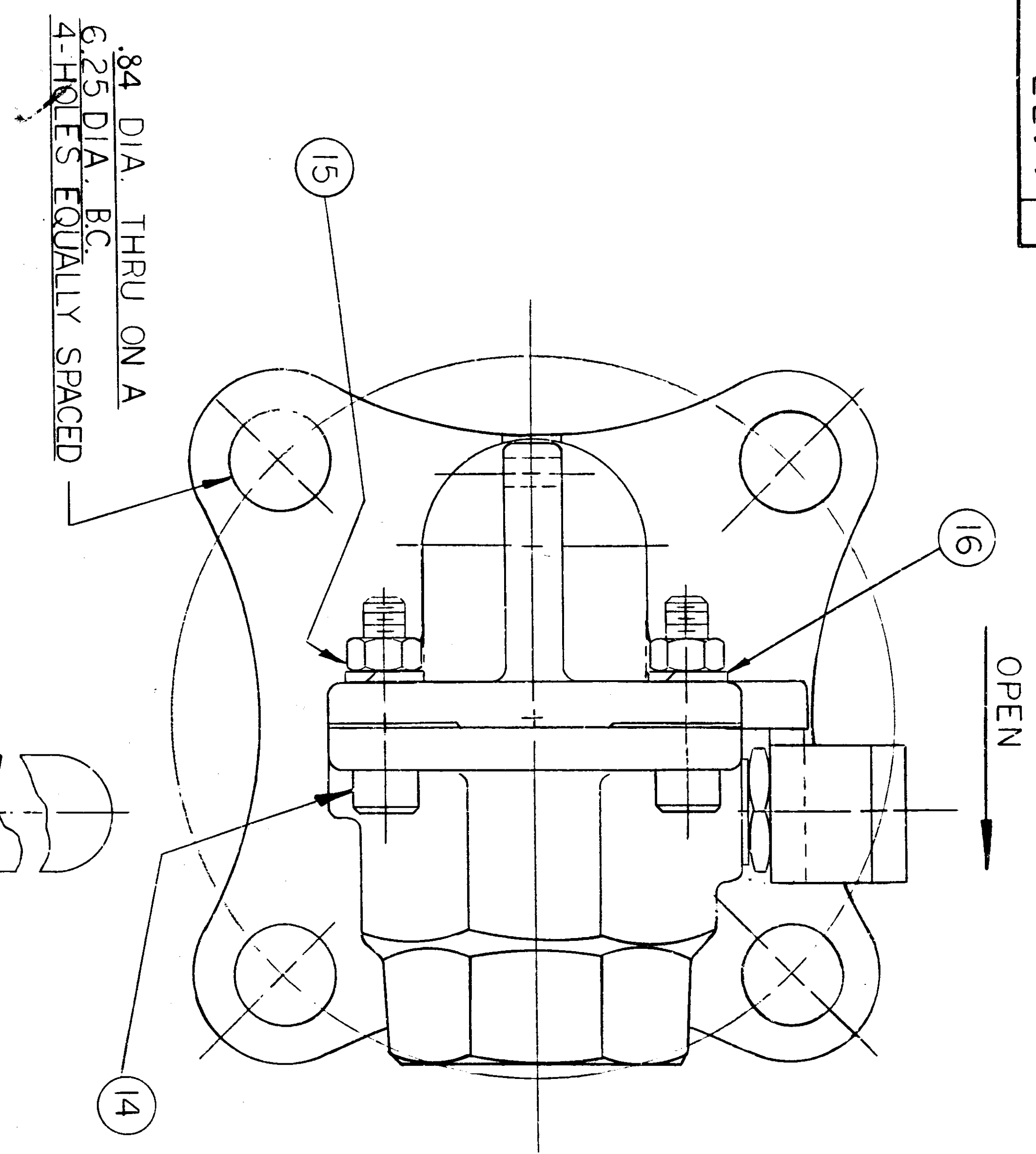


2247 D

1 2 3 4 5 6 7 8

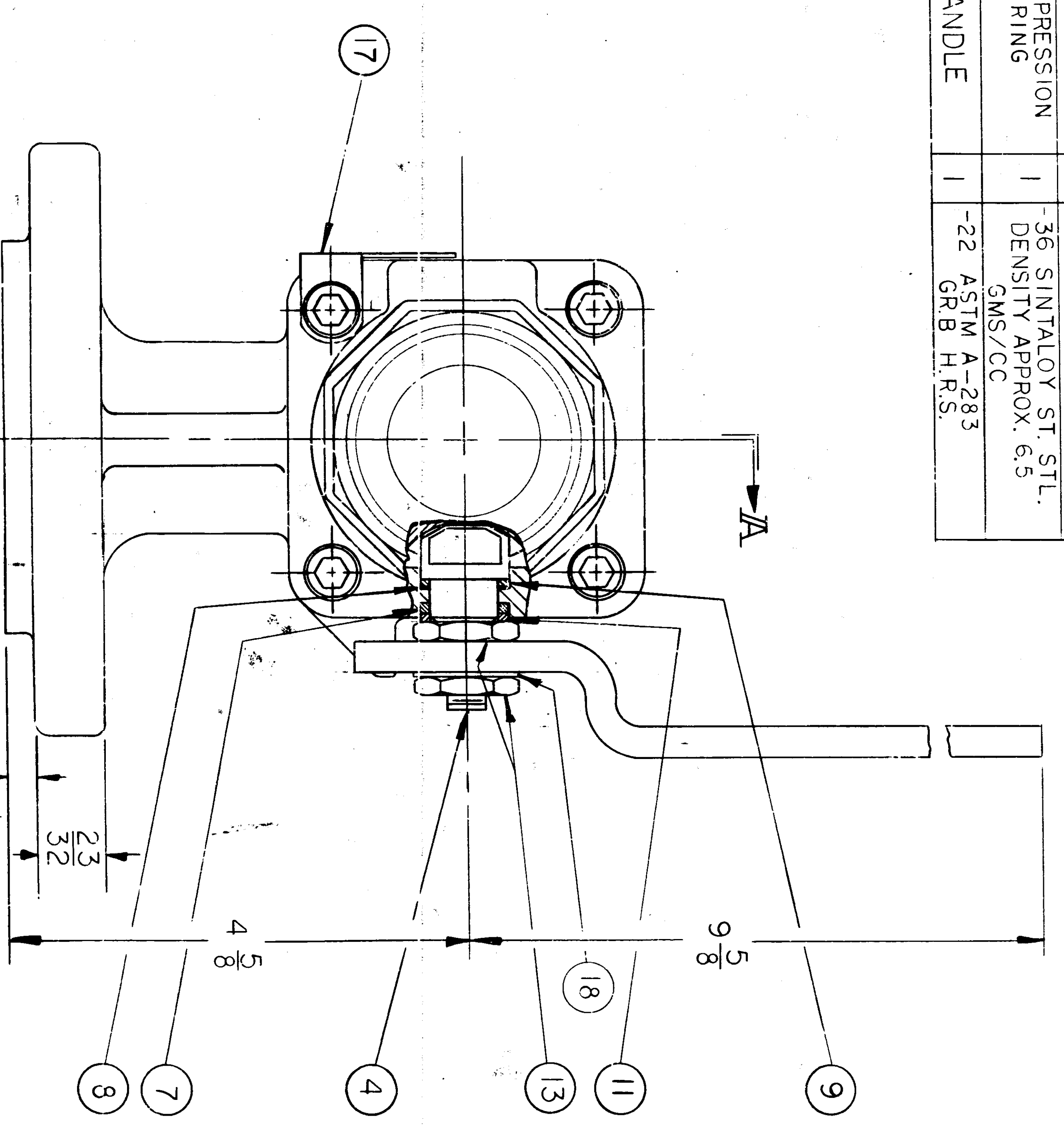
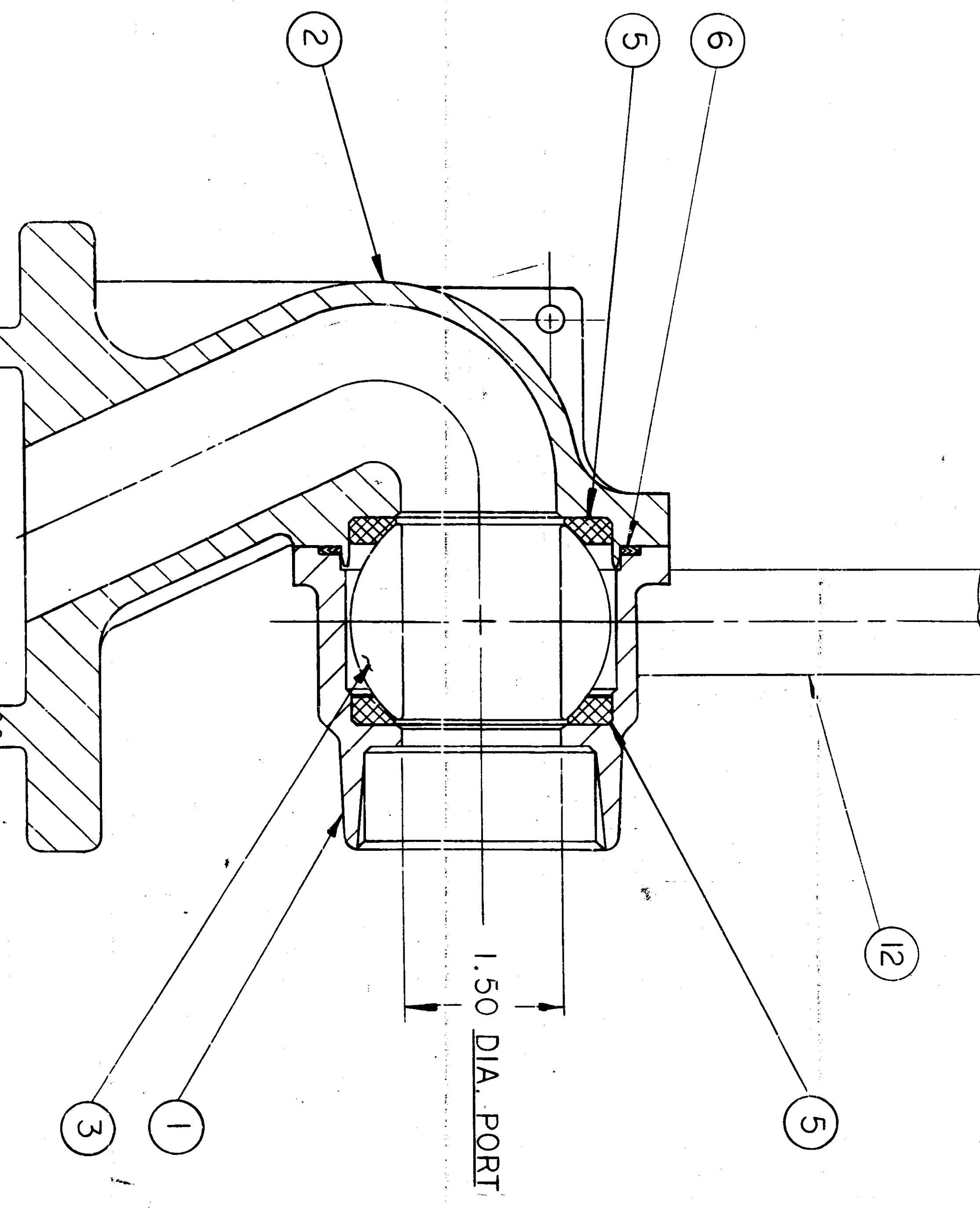


ITEM NO.	PART NAME	QTY	MATERIAL SPEC.
1	BODY	1	-22 ASTM A-216 WCB
2	BODY CAP	1	-22 ASTM A-216 WCB
3	BALL	1	-22 ANY AISI SERIES 11X OR AISI 12L15 -36 30-S-763 CL 316 COND. A OR ASTM A-276 CL 316 COND. A
4	STEM	1	-22 AISI C-1144 -36 30-S-763 CL 316 COND. B
5	SEAT	2	-50-PTFE 100% -49-FILLED PTFE FNE. JP-71
6	BODY SEAL	1	-36 ASTM A-167 FLEXITALIC CODE 002-70-014
7	UPPER STEM SEAL	1	-50 PTFE 100%
8	SECONDARY STEM SEAL	1	-60 GRAFOIL GR.GTA.
9	LOWER STEM SEAL	1	50 PTFE 100%
11	COMPRESSION RING	1	-36 SINTALLOY ST. STL. DENSITY APPROX. 6.5 GMS/CC
12	HANDLE	1	-22 ASTM A-283 GR. B H.R.S.

ITEM NO.	PART NAME	QTY	MATERIAL SPEC.
13	STEM NUT	2	-30 AISI 302, 303, 304 TYPE 18-8
14	SOQ. HEAD CAP SCREW	4	-20 CARB. STL. BLACK OXIDE
15	HEX NUT CENTERLOCK	4	-20 CARB. STL. BLACK OXIDE
16	LOCKWASHER	4	-22 BLACK OXIDE
17	IDENT. TAG	1	-30 ST. STL. ANY AISI 300 SERIES
18	LOCKWASHER	1	5/8 SHAKERPROOF # 1229

ASSEMBLY BOLT TORQUE 32-35 FT/LBS.

NOTE: FOR INSTALLATION, MAINTENANCE, AND OPERATING INSTRUCTIONS SEE IMO-RL



OBSOLETE PER ECN 17121 8-27-98 R.R.

JAMESBURY CANADA	ALL
JAMESBURY NIPPON	
JAMESBURY SINGAPORE	
JAMESBURY TUSEAL (GERMANY)	
JAMESBURY TUSEAL (MEXICO)	

DEFINITION OF SYMBOLS	THIS DRAWING AND ALL INFORMATION CONTAINED HEREIN ARE THE PROPERTY OF JAMESBURY CORPORATION AND ARE NOT TO BE REPRODUCED OR TRANSMITTED IN ANY FORM OR BY ANY MEANS, ELECTRONIC OR MECHANICAL, INCLUDING PHOTOCOPYING, RECORDING, OR BY ANY INFORMATION STORAGE AND RETRIEVAL SYSTEM, WITHOUT THE WRITTEN PERMISSION OF JAMESBURY CORPORATION.
CONCENTRICITY	UNLESS OTHERWISE NOTED
ROUNDNESS	FRACTIONAL TOLERANCE ± 1/32
FLATNESS	THREE PLACE DECIMAL ± .003
SWAYBAR	± .001
PERPENDICULARITY	ALL ANGULAR SURFACES TO BE MAINTAINED UNLESS OTHERWISE NOTED

DATE	11/11/82	SCALE	1:1
DESIGNER	JM	CHECKED	JM
DRAWN	JM	DATE	11/11/82
APPROVED	JM	DATE	11/11/82
TITLE	ASSEMBLY - 2" SRA3 VALVE	MOD.	8"
MATERIAL SPECIFICATIONS		DO NOT SCALE DRAWING	
MAKE FROM PART NO.			
JAMESBURY CORP.	WORCESTER, MASS.	4477	

REV.	DATE	DESCRIPTION
A	10/29	ADDED TORQUE CHART
B	8/35	WAS HEX HD CAP SCREW-PICTURE CHANGE

SEPT. 7 1998