

# Valmet DNA PROFINET interface course

This course provides a detailed review of the PROFINET interface, when Valmet DNA environment is used.

Starting with basics, limitations and recommendations when we are using different kind of devices, cables, connectors and switches.

Practical exercises give also insight into PROFINET interface configuration: creating and saving device configuration with Fieldbus Configurator to the engineering database, loading parameters between configurator and PROFINET interface, checking and changing device parameters with online connection.

Process Controller applications and device diagnostic features are also explained with examples.

## Objective

After completing the course the participant will be able to manage PROFINET environments with know-how of limitations and recommendations. He will also be familiar with procedure when there are any needs to make configuration or device changes as well.

## Target group

Persons responsible for the maintenance of Valmet DNA.

## Prerequisite

Valmet DNA engineering course

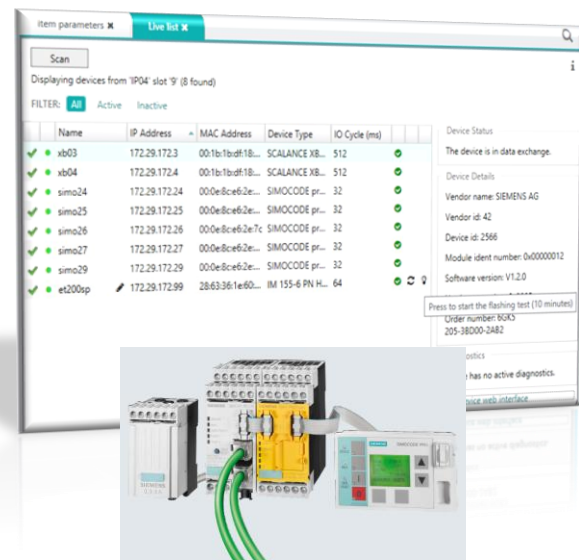
## Course duration

1 day

## Course limit

Max. 8 attendees

For more information, contact us:  
[www.valmet.com/automation/training](http://www.valmet.com/automation/training)  
[training.automation@valmet.com](mailto:training.automation@valmet.com)



## Benefits

Through Valmet's professional training programs, either standard courses or tailored to your specific needs, you will have optimized competences available in your organization. Together we make a development plan for your personnel based on your business needs, and deliver the agreed training flexibly and effectively.

Optimized competence development enables

- better utilization of features in the automation and control solutions
- proper installation, start-up, operation and maintenance of the solutions and equipment
- improved knowledge of product-related safety and environmental issues
- better employee motivation

The results are typically visible as higher productivity, plant availability, improvements in end product quality, time and material savings.



# Course Program

**Day1, 9:00 – 16:00**

## **Valmet DNA PROFINET Interface basics**

- New terminology
- Comparing PROFIBUS vs PROFINET

## **PROFINET Hardware**

- ACN-PCS, IO-controller
- Bus components and cables

## **PROFINET bus configuration**

- Fieldbus Configurator
- Device files (GSDML)
- Creating and changing the bus configuration
- Configuration, Download and activate

## **Valmet DNA application**

- Reading PROFINET data to PCS
- Valmet DNA application (Function Block Cad)

## **Diagnostics**

- IO device diagnostics, web interface
- VNC-connection EAS => ACN
- Signal monitoring, PNmon

