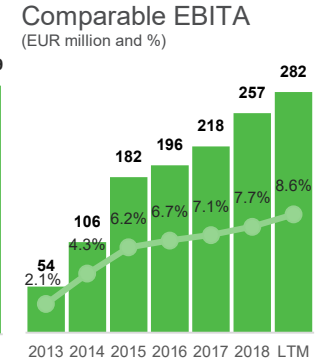
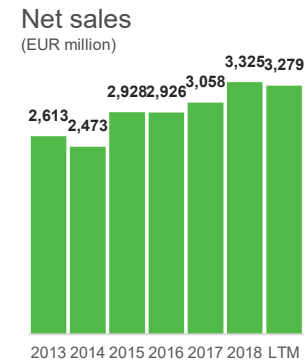
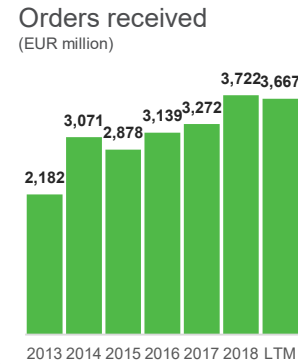
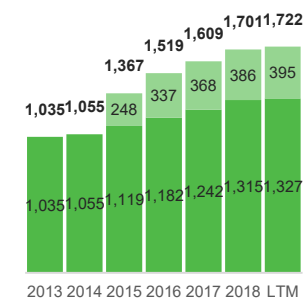


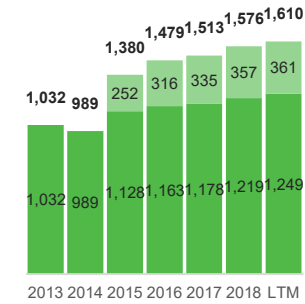
Key financials 2018	Orders received 3,722 M€	Net sales 3,325 M€	Order backlog 2,829 M€
Comparable EBITA 257 M€	Comparable EBITA 7.7% of net sales	Employees 12,528 	Operating cash flow 284 M€



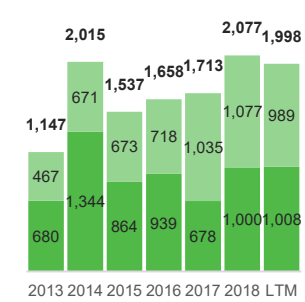
Orders received (EUR million)



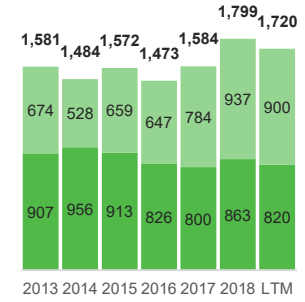
Net sales (EUR million)



Orders received (EUR million)

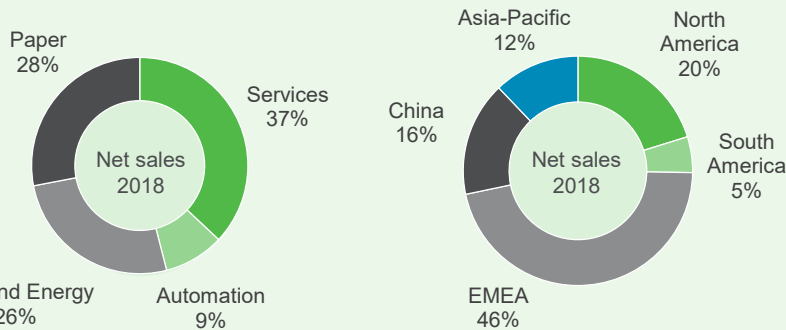


Net sales (EUR million)



Stable business
■ Services ■ Automation

Capital business
■ Pulp and Energy ■ Paper



Balance sheet figures As at March 31, 2019	Gearing -20%	Equity ratio 37%	ROCE 15%
Interest-bearing liabilities 360 M€	Net interest-bearing liabilities -174 M€	Balance sheet total 3,139 M€	Total equity 877 M€

LTM = Last twelve months (April 1, 2018 – March 31, 2019)
2013 financials on a carve-out basis.
Automation has been consolidated into Valmet's financials since April 1, 2015, when the acquisition was completed.
The figures for Automation business line includes internal net sales and internal orders received.

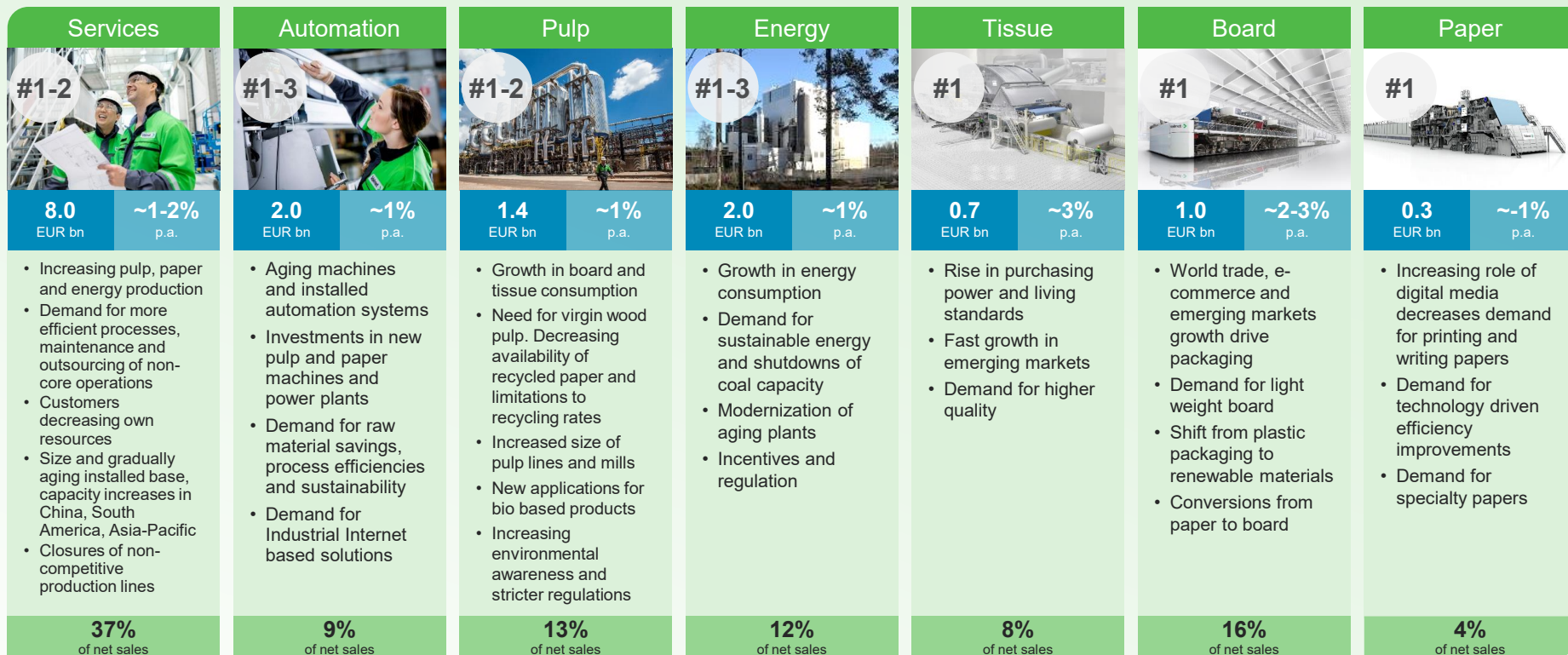
Investor Relations

Calle Loikkanen
Director, Investor Relations
Tel. +358 10 672 0020
calle.loikkanen@valmet.com

Tuuli Oja
Manager, Investor Relations
Tel. +358 10 672 0352
tuuli.oja@valmet.com

Inga-Maaret Aikioniemi
Coordinator, Investor Relations
Tel. +358 10 672 0973
inga-maaret.aikioniemi@valmet.com

Strong position in the growing market of converting renewables



■ Estimated market size for current offering (EUR)
 ■ Anticipated long-term market growth
 ■ Market drivers
 ■ % of net sales (2018)

Investment highlights

- Strong position in the growing market of converting renewables
- Widest offering combining process technology, services and automation in a unique way
- Large stable business offering growth and profitability
- Strong capital business with high market share and flexible cost structure
- Systematically building the future

Financial targets

- Net sales for stable business to grow over two times the market growth
- Net sales for capital business to exceed market growth
- Comparable EBITA: 8–10%
- Comparable return on capital employed (pre-tax), ROCE: 15–20%
- Dividend payout at least 50% of net profit