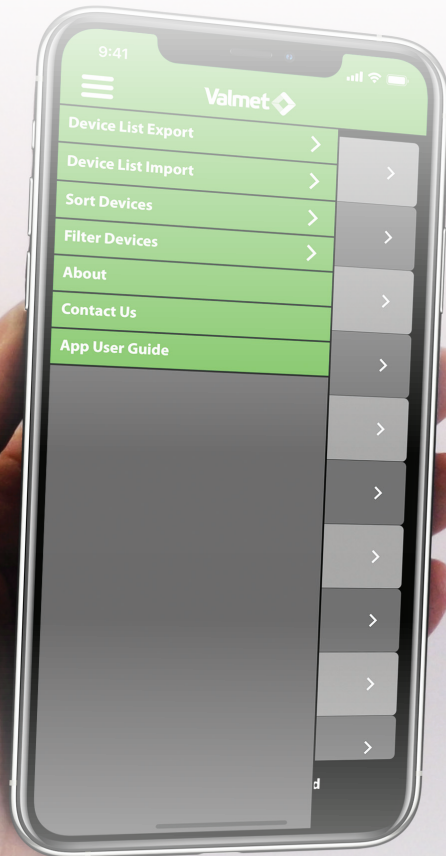




Stonel™ Wireless Link

User Guide

For your safety read these instructions first.



Stonel™ Axiom™



Stonel™ Eclipse™



Stonel™ Prism™

Table of contents

1	General	3
1.1	Getting started	3
1.2	Home screen	3
2	DeviceNet detail screens (AN92W, ANX92W, PI92W)	4
2.1	Operating information	4
2.2	More information	5
2.3	Diagnostics Data	6
3	AS-interface detail screens (AN96W, AN97W, ANX97W, EC97W, PI96W, PI97W)	7
3.1	Operating information	7
3.2	More information	8
3.3	Diagnostics Data	9
4	ASi-5 detail screens (AN98W and PI98W)	10
4.1	Operating information	10
4.2	More information	11
4.3	Diagnostics Data	12
4.4	Advanced Configuration	13
5	3-wire with IO-Link detail screens (EC30W, PI30W)	14
5.1	Operating information	14
5.2	More information	15
5.3	Diagnostics Data	16
5.4	Advanced Configuration	17
6	SST detail screens (AN35W, ANX35W, PI33W)	18
6.1	Operating information	18
6.2	More information	19
6.3	Diagnostics Data	20
7	Expeditor detail screens (PI80W, PI81W)	21
7.1	Operating information	21
7.2	More information	22
7.3	Diagnostics Data	23
8	Menu Navigation	24
8.1	Device List Export	24
8.2	Device List Import	24
8.3	Sort Devices	24
8.4	Filter Devices	24
9	Security of Wireless Link	25
9.1	General Security	25
9.1	Summary	25

1 General

1.1 Getting started

Before using this guide, ensure that you have downloaded the most current version of the Stonel Wireless Link app to your device. The app is available for Android and iOS devices. Your device must be updated to the current version and be equipped with *Bluetooth*® technology to use the Stonel Wireless Link app. The app is not compatible with *Bluetooth*® Classic.

Make sure that your device has its *Bluetooth*® capability turned on when attempting to use the Stonel Wireless Link app. This can be found under your device's settings. To ensure that you have good *Bluetooth*® reception, keep your device within 33 ft [10 m] of the module that you wish to connect to. The range of your *Bluetooth*® device may be affected by many things, including interference from other devices and physical obstructions.

WARNING

Upon disconnect or host disabling overrides, output forces will be removed and valve may cycle.

1.2 Home screen

Menu

[See page 24](#)

Selecting a valve

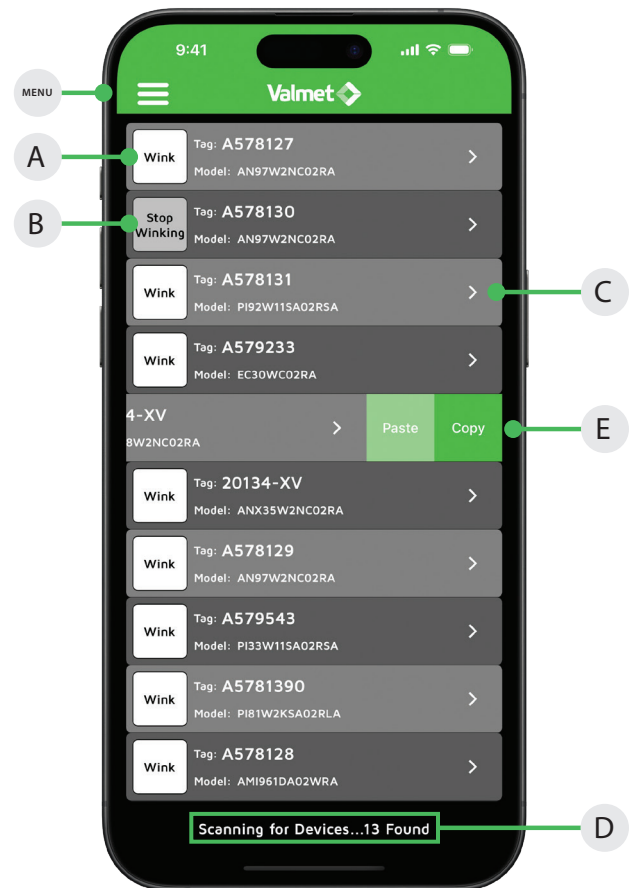
After opening the Stonel Wireless Link app, you are directed to the home screen. This screen allows you to browse and select a specific automated valve when multiple valves are present.

All energized wireless modules within range of your device will appear on the screen. If no powered devices are within range, the device list will be blank. To identify a specific valve when multiple valves are present,

- Select the wink button next to the device you wish to view. This will cause the module's LEDs to blink for 30 seconds, or
- until you press the "Stop Winking" button.
- Choose a specific valve by selecting the row that relates to the unit you wish to select, this will direct you to the operating information screen.
- Tap to stop scanning/restart scanning
- Copy/paste. This function is optional and best used when installing a new device or commissioning multiple devices.

After copying and pasting into a new device, verify all configurable data appears and then update fields that must change based on your application

- Tag
- Address
- Baud rate
- Advanced configuration
- Valve actuator description
- Additional information
- Etc.



Note

The list of devices present can be refreshed by swiping downward on the home screen.

Releasing a device

Once you have selected a Stonel device, it will be paired to your mobile device until you unpair it. In order for another mobile device user to access control with their wireless link app, unpair your device by going back to the home screen/device list.

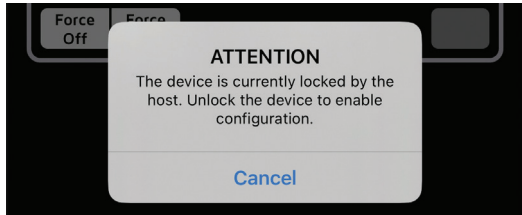
2 DeviceNet detail screens (AN92W, ANX92W, PI92W)

2.1 Operating information

You can customize the tag for a device, change the address, change the baud rate, force the solenoids on or off, cause the device to wink, and set the open/closed limits from this screen.

Locked Screen

If the icons on the screen appear grayed-out or unavailable to select, this means the host is still in control. Enable the control override bit for the device (DeviceNet™ Byte 0, Bit 7).

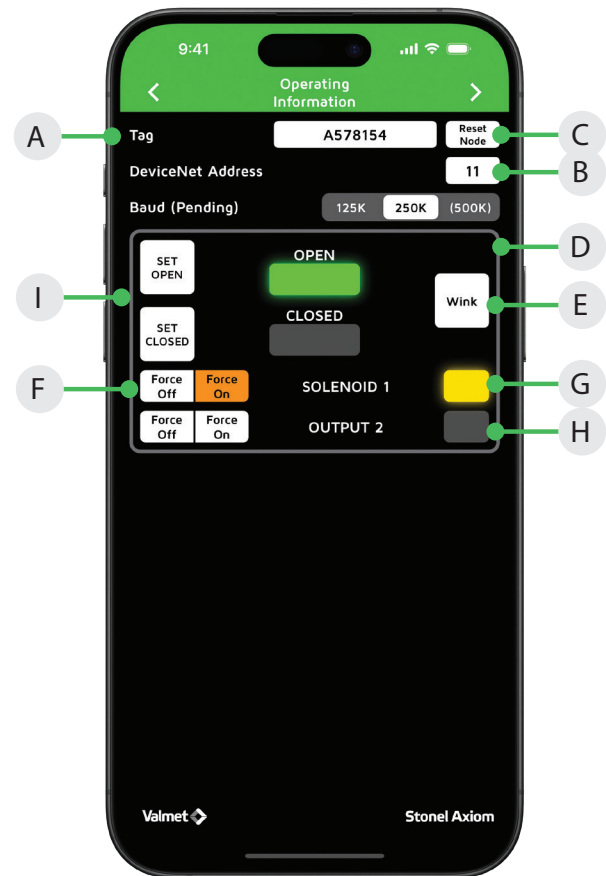


Changing the device tag or address

- A. To change the tag, edit the existing tag in the associated text field. The tag can be up to sixteen characters long.
- B. To change the address, edit the existing address in the associated text field. The address can be 1 to 63. When changing the address, a warning screen will appear indicating this action could disrupt the process. Select cancel or continue. Select continue and alter the address via number pad and select done. A warning screen will appear indicating the choice to reset now or reset later. Resetting the device could disrupt the process. Selecting reset now will implement the address change of the device.
- C. Selecting reset later will not implement device address change until selecting reset node and will cause the device address to indicate pending status.
- D. To change the device baud rate, select the desired rate from the choices. The device default baud rate is 125K. When changing the baud rate, a warning screen will appear indicating this action could disrupt the process. Select reset now or reset later. Selecting reset now will implement the change to the baud rate of the device. Selecting reset later will not implement the change to the baud rate of the device until selecting reset node. Selecting reset node will cause a warning screen to appear indicating resetting the device could disrupt the process. Select continue to implement changes made to the device address and/or device baud rate.
- E. Select the wink button. This will cause the module's LEDs to blink for 30 seconds, or until you press the "Stop Winking" button.

Forcing the solenoids on/off

- F. Forcing a solenoid on or off will override host control if wireless link overrides are enabled. The solenoid control state is forced on or forced off when it is highlighted in orange. Warning screen will appear indicating this action could disrupt the process. Select cancel or continue.



- G. Select continue and when a solenoid is on, a yellow light will illuminate next to the solenoid.
- H. Select continue and when a solenoid is off, no light will illuminate next to the solenoid.

Setting the valve position

- I. Forcing the solenoid on and off is one way of actuating the valve when setting the open and closed positions.

To set a valve to the closed position:

1. Actuate the valve to the CLOSED position. This can be done by forcing the solenoid(s) on or off.
2. Select set closed. A warning screen will appear indicating this action could disrupt the process. Select cancel or continue.
3. Select continue and the closed light will illuminate.
4. The valve now remembers the current position as the closed position.

To set a valve to the open position:

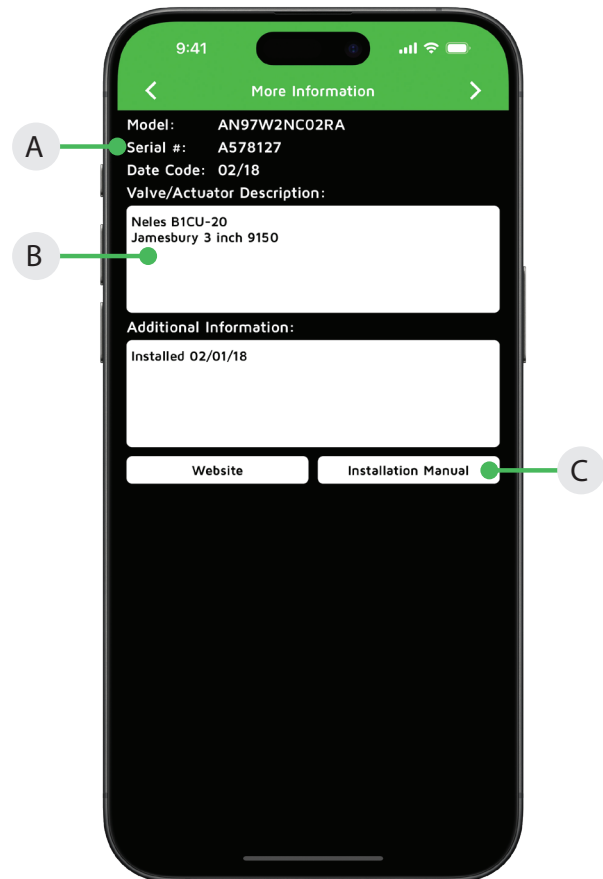
5. Actuate the valve to the OPEN position. This can be done by forcing the solenoid(s) on or off.
6. Select set open. A warning screen will appear indicating this action could disrupt the process. Select cancel or continue.
7. Select continue and the open light will illuminate.
8. The valve now remembers the current position as the open position.

2 DeviceNet detail screens (AN92W, ANX92W, PI92W) continued

2.2 More information

To see additional information about a specific valve, swipe right or use the arrows at the top of the screen.

- A. At the top of the more Information screen, the unit model number, serial number, and date code are displayed. These are preset from the factory and cannot be changed.
- B. There are two customizable text boxes titled "Valve/Actuator Description" and "Additional Information" where up to 160 characters can be added for user notes, such as maintenance or service records.
- C. The direct links to the website and the unit Installation, Maintenance and Operating Instructions located on the bottom buttons of the More Information screen require an internet connection to access.



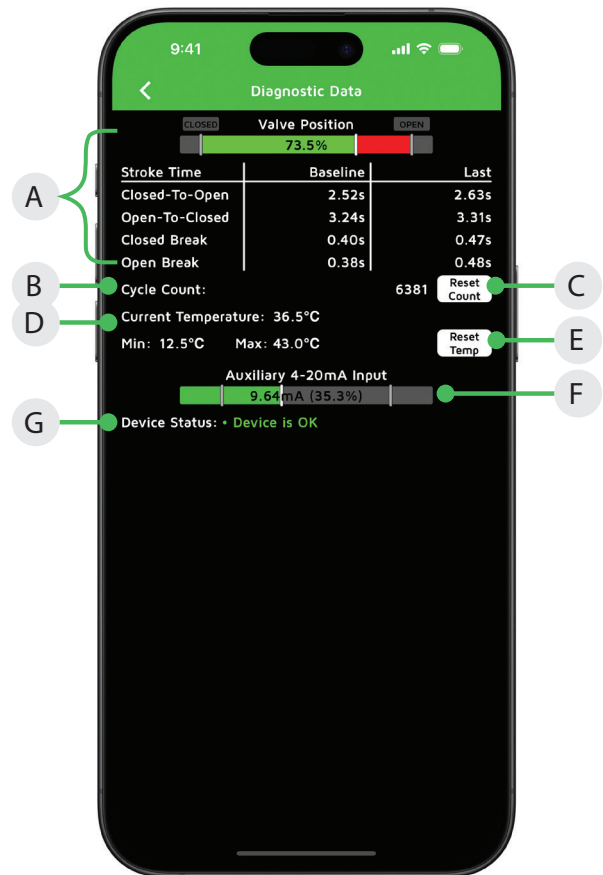
2 DeviceNet detail screens (AN92W, ANX92W, PI92W) continued

2.3 Diagnostics Data

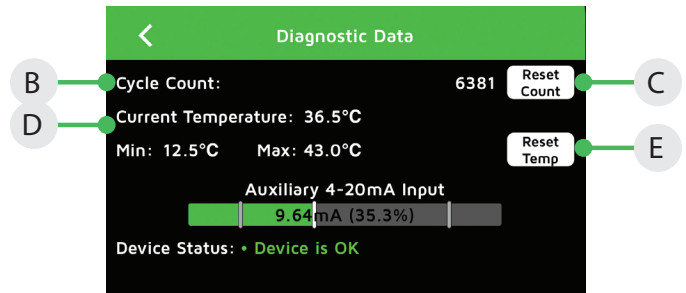
To return to previous screens, swipe left or use the arrow at the top of this screen.

- A. The valve position information includes real time valve position, stroke time baseline, and stroke time of last cycle (AN92W, ANX92W only).
- B. The valve cycle count is displayed and indicates how many cycles the valve has made since last reset. A cycle is considered to be a complete actuation of the valve.
- C. Selecting the reset count button will erase the cycle count and start counting again from 0.
- D. The current temperature of the unit is displayed; along with the temperature range of the valve since last reset.
- E. Selecting the reset temp button will erase the historical temperature data and start a new period of temperature data collection.
- F. If an external 4-20mA loop powered device is connected to the auxiliary analog input of the module, the feedback signal can be monitored here.
- G. The device status can display numerous faults that are detected by the module. This data is only available via the Wireless Link app and is not accessible from the bus network. The following is a list of errors/faults that can be detected and displayed on compatible devices:

Device status errors/faults	
Common	AN92W, ANX92W only
Bus protocol error	Output shorted
Major DeviceNet fault	Internal sensor fault
Minor DeviceNet fault	No magnet detected
DeviceNet timed-out	
Pending DeviceNet change	
Duplicate address	
Bus-off fault	



AN92W, ANX92W Screen



PI92W Screen

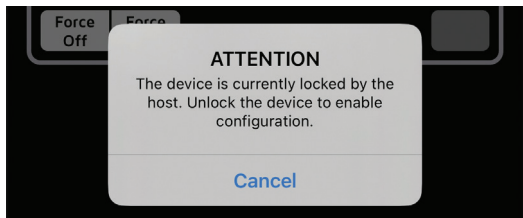
3 AS-interface detail screens (AN96W, AN97W, ANX97W, EC97W, PI96W, PI97W)

3.1 Operating information

You can customize the tag for a device, change the address, change the baud rate, force the solenoids on or off, cause the device to wink, and set the open/closed limits from this screen.

Locked Screen

If the icons on the screen appear grayed-out or unavailable to select, this means the host is still in control. Enable the control override bit for the device (AS-i DO Bit 2).

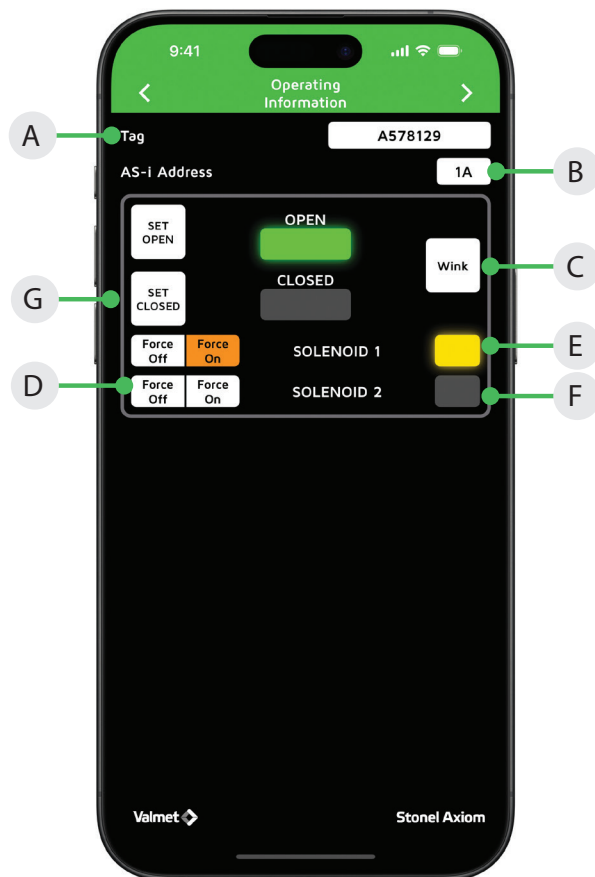


Changing the device tag or address

- A. To change the tag, edit the existing tag in the associated text field. The tag can be up to sixteen characters long.
- B. To change the address, edit the existing address in the associated text field. The address can be 0-31A/B. When changing the address, a warning screen will appear indicating this action could disrupt the process. Select cancel or continue. Select continue and alter the address via number pad and select done.
- C. Select the wink button next to the device you wish to view. This will cause the module's LEDs to blink for 30 seconds, or until you press the "Stop Winking" button.

Forcing the solenoids on/off

- D. Forcing a solenoid on or off will override host control if wireless link overrides are enabled. The solenoid control state is forced on or forced off when it is highlighted in orange. Warning screen will appear indicating this action could disrupt the process. Select cancel or continue.
- E. Select continue and when a solenoid is on, a yellow light will illuminate next to the solenoid.
- F. Select continue and when a solenoid is off, no light will illuminate next to the solenoid.



Setting the valve position

- F. Forcing the solenoid on and off is one way of actuating the valve when setting the open and closed positions.

To set a valve to the closed position:

1. Actuate the valve to the CLOSED position. This can be done by forcing the solenoid(s) on or off.
2. Select set closed. A warning screen will appear indicating this action could disrupt the process. Select cancel or continue.
3. Select continue and the closed light will illuminate.
4. The valve now remembers the current position as the closed position.

To set a valve to the open position:

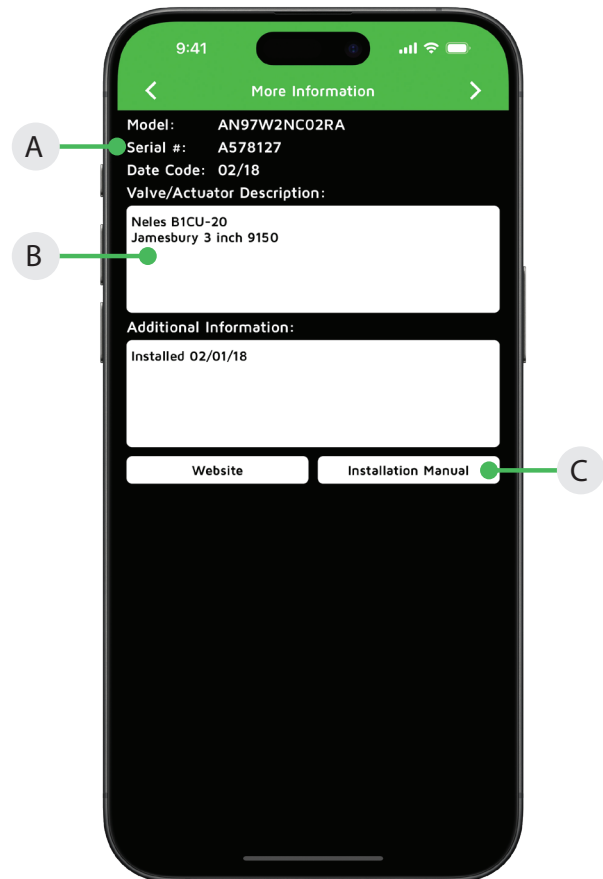
5. Actuate the valve to the OPEN position. This can be done by forcing the solenoid(s) on or off.
6. Select set open. A warning screen will appear indicating this action could disrupt the process. Select cancel or continue.
7. Select continue and the open light will illuminate.
8. The valve now remembers the current position as the open position.

3 AS-interface detail screens (AN96W, AN97W, ANX97W, EC97W, PI96W, PI97W) continued

3.2 More information

To see additional information about a specific valve, swipe right or use the arrows at the top of the screen.

- A. At the top of the more Information screen, the unit model number, serial number, and date code are displayed. These are preset from the factory and cannot be changed.
- B. There are two customizable text boxes titled "Valve/Actuator Description" and "Additional Information" where up to 160 characters can be added for user notes, such as maintenance or service records.
- C. The direct links to the website and the unit Installation, Maintenance and Operating Instructions located on the bottom buttons of the More Information screen require an internet connection to access.

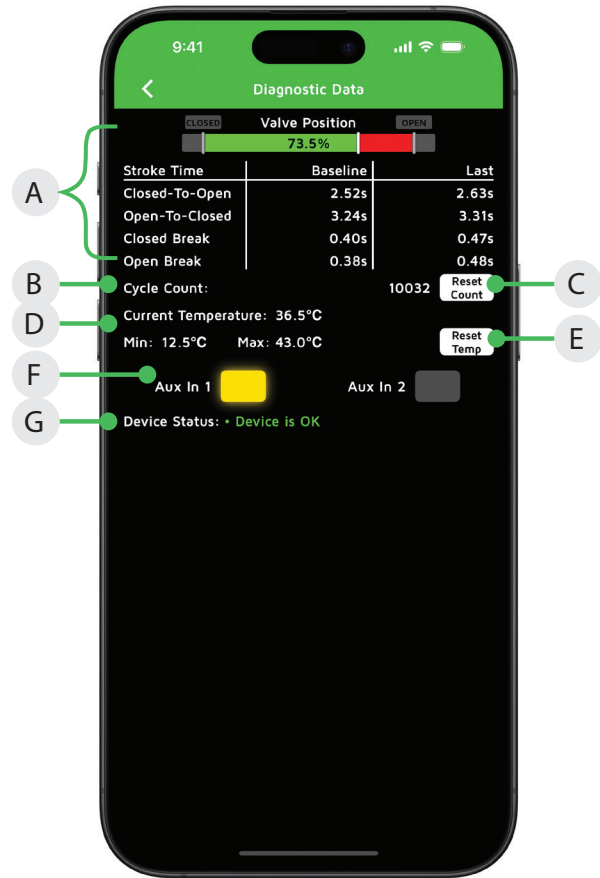


3 AS-interface detail screens (AN96W, AN97W, ANX97W, EC97W, PI96W, PI97W) continued

3.3 Diagnostics Data

To return to previous screens, swipe left or use the arrow at the top of this screen.

- A. The valve position information includes real time valve position, stroke time baseline, and stroke time of last cycle.
- B. The valve cycle count is displayed and indicates how many cycles the valve has made since last reset. A cycle is considered to be a complete actuation of the valve.
- C. Selecting the reset count button will erase the cycle count and the stroke times and start counting again from 0.
- D. The current temperature of the unit is displayed; along with the temperature range of the valve since last reset.
- E. Selecting the reset temp button will erase the historical temperature data and start a new period of temperature data collection.
- F. If external switches are connected to either auxiliary input, switch status will be displayed (AN96W, AN97W, ANX97W only).
- G. The device status can display numerous faults that are detected by the module. This data is only available via the Wireless Link app and is not accessible from the bus network. The following is a list of errors/faults that can be detected and displayed on compatible devices:



Device status errors/faults
Output shorted
Internal sensor fault
No magnet detected
Bus protocol error
No data exchange

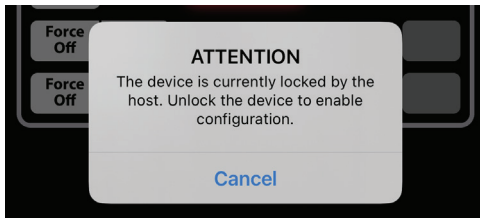
4 ASi-5 detail screens (AN98W and PI98W)

4.1 Operating information

You can customize the tag for a device, force the solenoids on or off, cause the device to wink, and set the open/closed limits from this screen.

Locked Screen

If the icons on the screen appear grayed-out or unavailable to select, this means the host is still in control. Check to ensure that all of the signal wires are disconnected (open/closed/solenoid power) and that the fail safe settings are correctly configured.



Changing the device tag

- A. To change the tag, edit the existing tag in the associated text field. The tag can be up to sixteen characters long.
- C. Select the wink button. This will cause the module's LEDs to blink for 30 seconds, or until you press the "Stop Winking" button.

Forcing the solenoids on/off

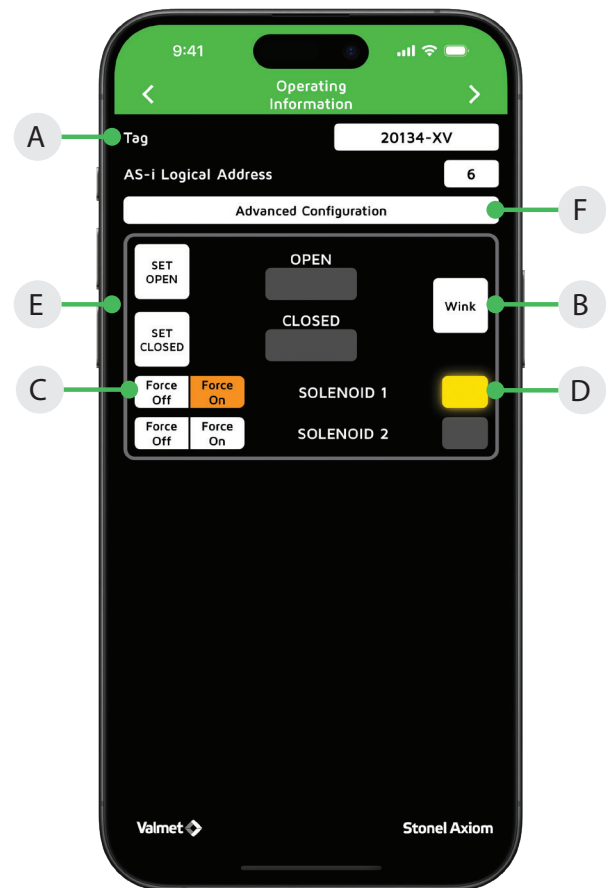
- D. Forcing a solenoid on or off will override host control if wireless link overrides are enabled. The solenoid control state is forced on or forced off when it is highlighted in orange. Warning screen will appear indicating this action could disrupt the process. Select cancel or continue.
- E. Select continue and when a solenoid is on, a yellow light will illuminate next to the solenoid. Select continue and when a solenoid is off, no light will illuminate next to the solenoid.

Setting the valve position

- F. Forcing the solenoid on and off is one way of actuating the valve when setting the open and closed positions.

To set a valve to the closed position:

1. Actuate the valve to the CLOSED position. This can be done by forcing the solenoid(s) on or off.
2. Select set closed. A warning screen will appear indicating this action could disrupt the process. Select cancel or continue.
3. Select continue and the closed light will illuminate.
4. The valve now remembers the current position as the closed position.



To set a valve to the open position:

5. Actuate the valve to the OPEN position. This can be done by forcing the solenoid(s) on or off.
6. Select set open. A warning screen will appear indicating this action could disrupt the process. Select cancel or continue.
7. Select continue and the open light will illuminate.
8. The valve now remembers the current position as the open position.

Advanced Configuration

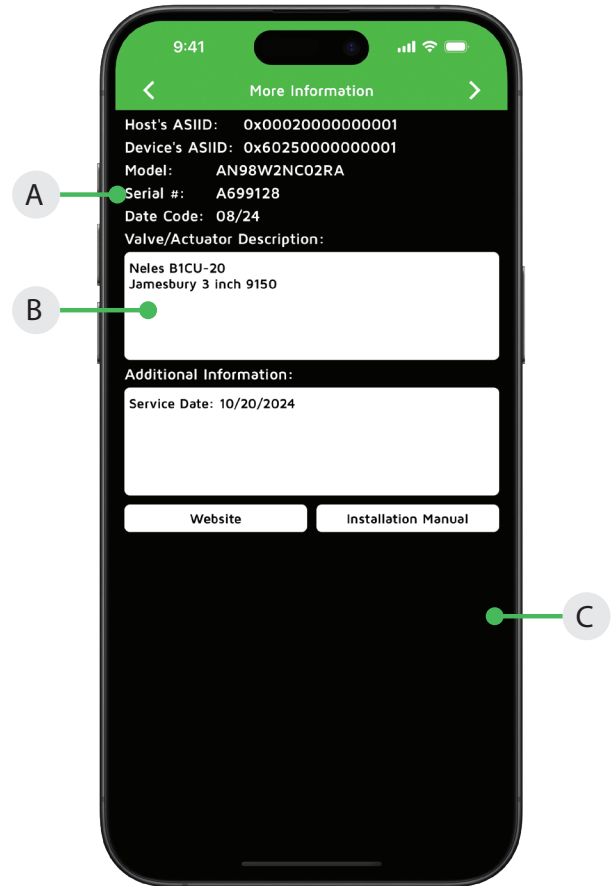
- F. [See section 4.4](#)

4 ASi-5 detail screens (AN98W and PI98W) continued

4.2 More information

To see additional information about a specific valve, swipe right or use the arrows at the top of the screen.

- A. At the top of the more Information screen, the Host's ASIID, the Device's ASIID, and the unit model number, serial number, and date code are displayed. The Host's ASIID comes from the Gateway/Master and the remaining information comes preset from the factory and cannot be changed.
- B. There are two customizable text boxes titled "Valve/Actuator Description" and "Additional Information" where up to 160 characters can be added for user notes, such as maintenance or service records.
- C. The direct links to the website and the unit Installation, Maintenance and Operating Instructions located on the bottom buttons of the More Information screen require an internet connection to access.



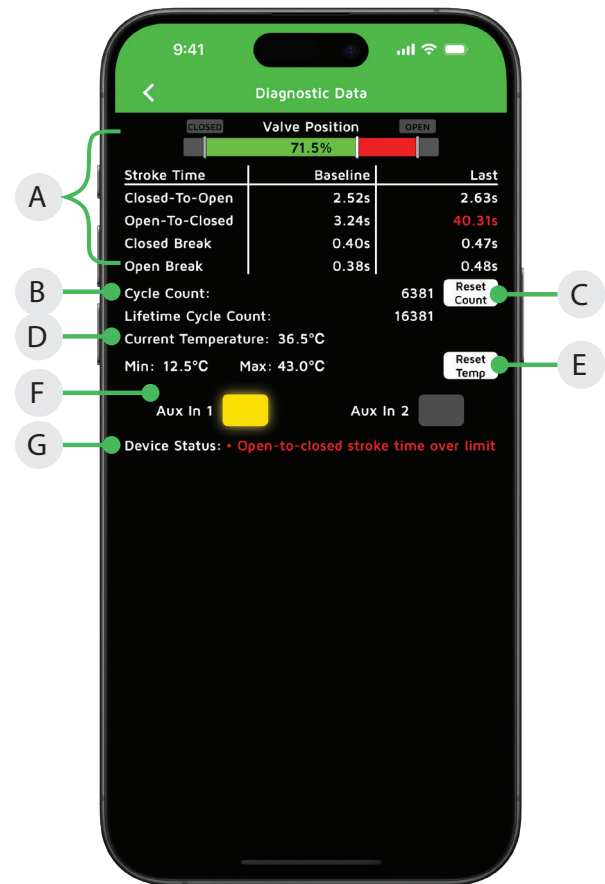
4 ASi-5 detail screens (AN98W and PI98W) continued

4.3 Diagnostics Data

To return to previous screens, swipe left or use the arrow at the top of this screen.

- The valve position information includes real time valve position, stroke time baseline, and stroke time of last cycle.
- The valve cycle count is displayed and indicates how many cycles the valve has made since last reset. A cycle is considered to be a complete actuation of the valve. Lifetime cycle count is not resettable.
- Selecting the reset count button will erase the cycle count and the stroke times and start counting again from 0.
- The current temperature of the unit is displayed; along with the temperature range of the valve since last reset.
- Selecting the reset temp button will erase the historical temperature data and start a new period of temperature data collection.
- If external switches are connected to either auxiliary input, switch status will be displayed (AN98W, ANX98W only).
- The device status can display numerous faults that are detected by the module. This data is only available via the Wireless Link app and is not accessible from the bus network. The following is a list of errors/faults that can be detected and displayed on compatible devices:

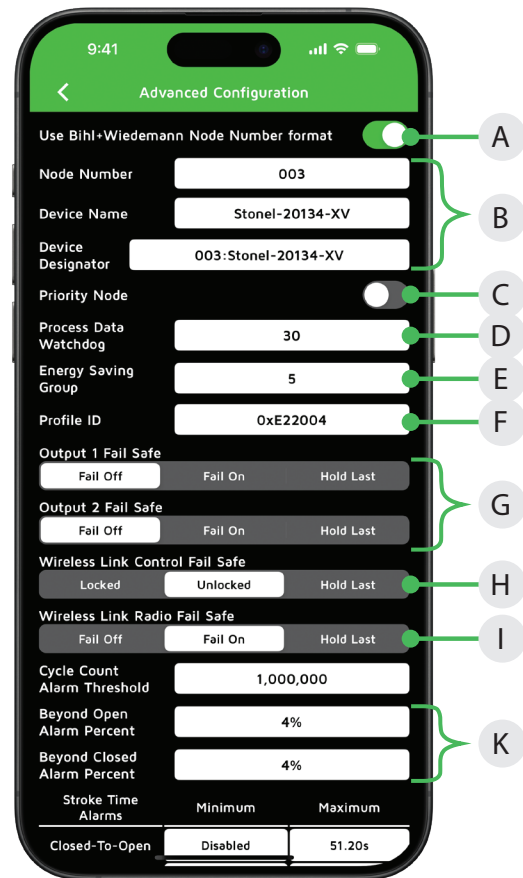
Device status errors/faults
Output shorted
Internal sensor fault
No magnet detected
Bus protocol error
No data exchange



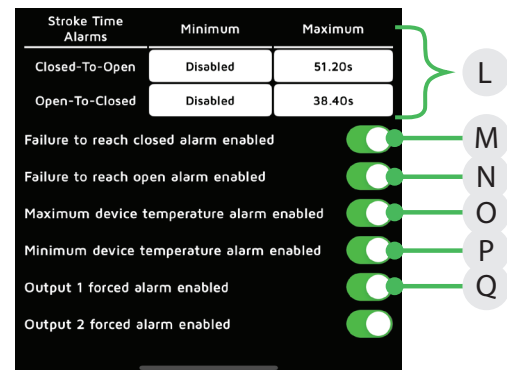
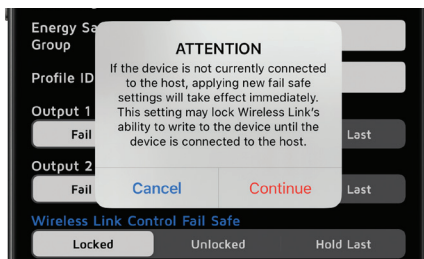
4 ASI-5 detail screens (AN98W and PI98W) continued

4.4 Advanced Configuration

- A. When using the Bihl +Wiedemann gateway, enable the node number format. When using another gateway/device do not enable this selection.
- B. Enter the device node number, device name and the device designator.
- C. Enable priority node selection for faster 1.27ms scan time.
- D. Process data watchdog can be entered to activate the fail safe outputs for recovery after lost communications.
- E. Enter energy saving group number if desired.
- F. Profile ID (read only text field)
- G. The Output Fail Safe configures the state of the associated output when ASI-5 communication is ended. Fail Off will deenergize the output. Fail On will energize the output. Hold Last will maintain the most recent command from the control system.
- H. The Wireless Link Control Fail Safe configures the ability of Wireless Link to make changes to the device's configuration when ASI-5 communication is ended. Locked will result in Wireless Link being in read-only mode. Unlocked will result in Wireless Link being allowed write access to the device. Hold Last will maintain the most recent command from the control system.
- I. The Wireless Link Radio Fail Safe configures the state of Wireless Link radio when ASI-5 communication is ended. Fail Off will result in the Wireless Link radio being fully disabled. Fail On will result in the Wireless Link radio being enabled. Hold Last will maintain the most recent command from the control system.



Notice: Setting the Wireless Link Radio Fail Safe to Fail Off will cause the connection to the device to be dropped if not currently communication via ASI-5. To revert this setting, the device must be connected to an ASI-5 network and reconfigured with AS-i tools.

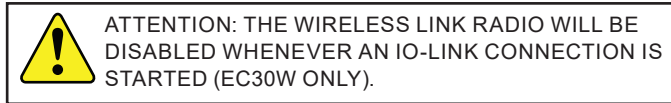


- J. Cycle count alarm event will be triggered once cycles exceed this threshold.
- K. Valve position beyond open/closed limit event will be triggered if valve position moves beyond the open/closed set-point by this percent.
- L. A Stroke Time over/under limit event will be triggered if the last stroke time is over/under the associated threshold.
- M. Event generated if valve returned to open without arriving at closed.
- N. Event generated if valve returned to closed without arriving at open.
- O. Event generated if the temperature of the device exceeds its rated maximum.
- P. Event generated if the temperature of the device is below its rated minimum.
- Q. Event generated if the associated output is forced using Wireless Link.

5 3-wire with IO-Link detail screens (EC30W, PI30W)

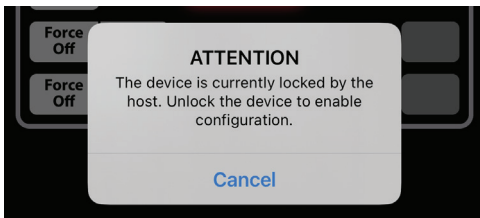
5.1 Operating information

You can customize the tag for a device, force the solenoids on or off, cause the device to wink, and set the open/closed limits from this screen.



Locked Screen

If the icons on the screen appear grayed-out or unavailable to select, this means the host is still in control. Check to ensure that all of the signal wires are disconnected (open/closed/solenoid power) and that the fail safe settings are correctly configured.



Changing the device tag

- To change the tag, edit the existing tag in the associated text field. The tag can be up to sixteen characters long.
- Select the wink button. This will cause the module's LEDs to blink for 30 seconds, or until you press the "Stop Winking" button.

Forcing the solenoids on/off

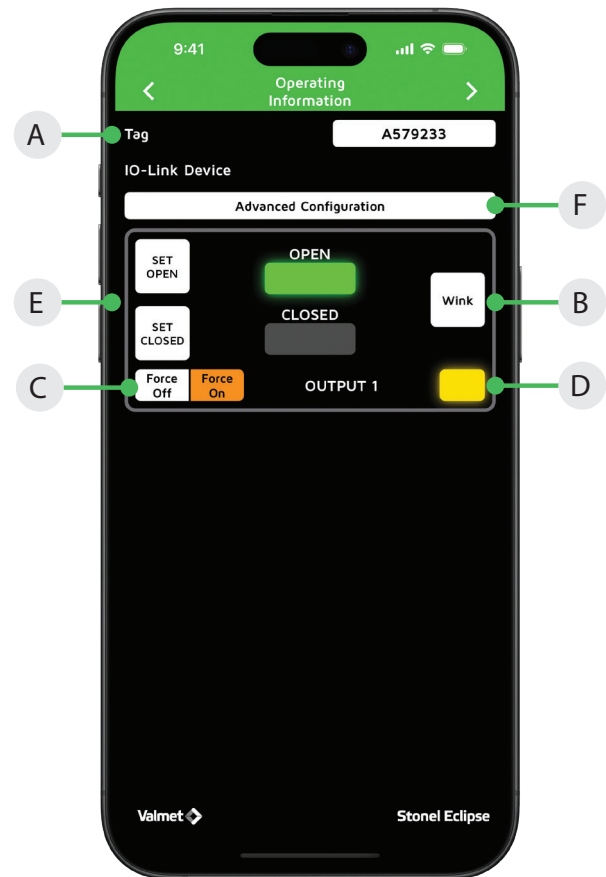
- Forcing a solenoid on or off will override host control if wireless link overrides are enabled. The solenoid control state is forced on or forced off when it is highlighted in orange. Warning screen will appear indicating this action could disrupt the process. Select cancel or continue.
- Select continue and when a solenoid is on, a yellow light will illuminate next to the solenoid. Select continue and when a solenoid is off, no light will illuminate next to the solenoid.

Setting the valve position

- Forcing the solenoid on and off is one way of actuating the valve when setting the open and closed positions.

To set a valve to the closed position:

- Actuate the valve to the CLOSED position. This can be done by forcing the solenoid(s) on or off.
- Select set closed. A warning screen will appear indicating this action could disrupt the process. Select cancel or continue.
- Select continue and the closed light will illuminate.
- The valve now remembers the current position as the closed position.



To set a valve to the open position:

- Actuate the valve to the OPEN position. This can be done by forcing the solenoid(s) on or off.
- Select set open. A warning screen will appear indicating this action could disrupt the process. Select cancel or continue.
- Select continue and the open light will illuminate.
- The valve now remembers the current position as the open position.

Advanced Configuration

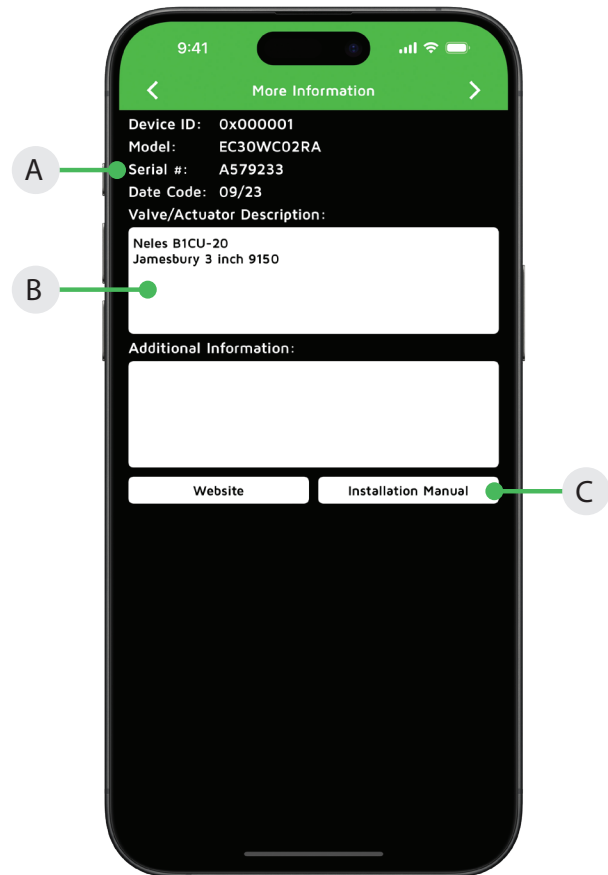
- [See section 5.4](#)

5 3-wire detail screens (EC30W, PI30W) continued

5.2 More information

To see additional information about a specific valve, swipe right or use the arrows at the top of the screen.

- A. At the top of the more Information screen, the device ID, unit model number, serial number, and date code are displayed. These are preset from the factory and cannot be changed.
- B. There are two customizable text boxes titled "Valve/Actuator Description" and "Additional Information" where up to 160 characters can be added for user notes, such as maintenance or service records.
- C. The direct links to the website and the unit Installation, Maintenance and Operating Instructions located on the bottom buttons of the More Information screen require an internet connection to access.

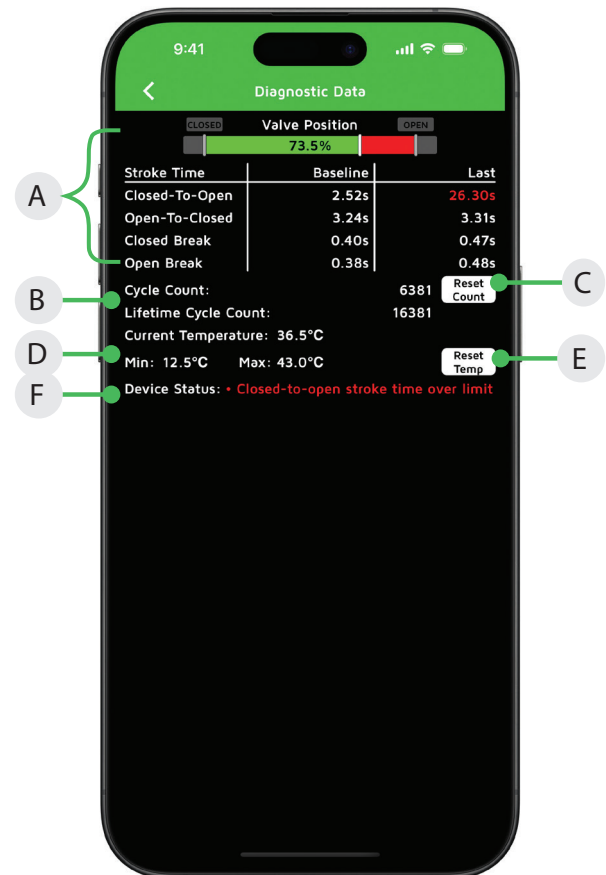


5 3-wire detail screens (EC30W, PI30W) continued

5.3 Diagnostics Data

To return to previous screens, swipe left or use the arrow at the top of this screen.

- The valve position information includes real time valve position, stroke time baseline, and stroke time of last cycle.
- The valve cycle count is displayed and indicates how many cycles the valve has made since last reset. A cycle is considered to be a complete actuation of the valve. Lifetime cycle count is not resettable.
- Selecting the reset count button will erase the cycle count and the stroke times and start counting again from 0.
- The current temperature of the valve monitor is displayed; along with the temperature range of the valve since last reset.
- Selecting the reset temp button will erase the historical temperature data and start a new period of temperature data collection.
- The device status can display numerous faults that are detected by the module. This data is available via the Wireless Link app and the bus network. The following is a list of errors/faults that can be detected and displayed on compatible devices:

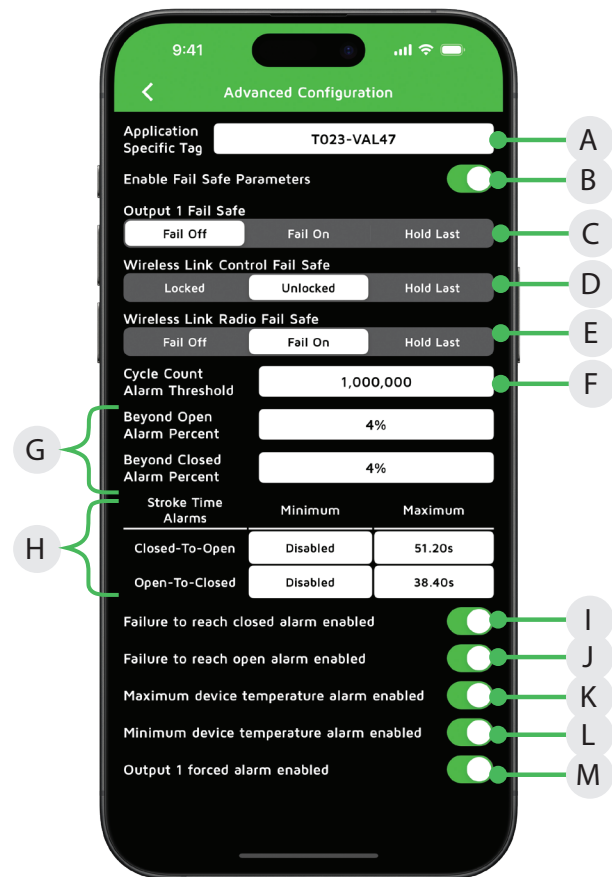


Device status errors/faults
Output shorted
Internal sensor fault
No magnet detected
Open signal shorted
Closed signal shorted
Thermal shutdown error
Supply voltage too low
Cycle Count over limit
Closed-to-open stroke time over limit
Closed-to-open stroke time under limit
Open-to-closed stroke time over limit
Open-to-closed stroke time under limit
Device temperature over limit
Device temperature under limit
Valve position under closed limit
Valve position over open limit
Valve failed to reach closed
Valve failed to reach open
Insufficient magnetic strength
Configuration Change Failed

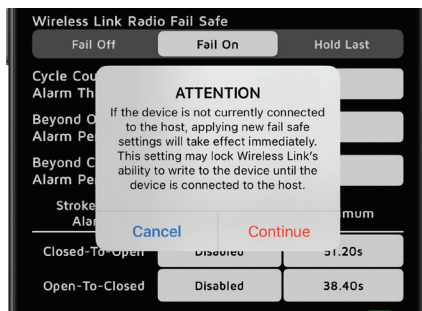
5 3-wire detail screens (EC30W, PI30W) continued

5.4 Advanced Configuration

- A. Application specific tag is used to mark a device with user- or application-specific information. This tag is visible over the IO-Link network.
- B. Enabling Fail Safe parameters will energize the outputs according to the fail safe configuration. If disabled, the outputs will fail to the state of the Solenoid Control input terminal (SIO mode). When enabled, choose the state to which the output will fail when IO-Link communication ends.
- C. The Output Fail Safe configures the state of the associated output when IO-Link communication is ended. Fail Off will de-energize the output. Fail On will energize the output. Hold Last will maintain the most recent command from the control system.
- D. The Wireless Link Control Fail Safe configures the ability of Wireless Link to make changes to the device's configuration when IO-Link communication is ended. Locked will result in Wireless Link being in read-only mode. Unlocked will result in Wireless Link being allowed write access to the device. Hold Last will maintain the most recent command from the control system.
- E. The Wireless Link Radio Fail Safe configures the state of Wireless Link radio when IO-Link communication is ended. Fail Off will result in the Wireless Link radio being fully disabled. Fail On will result in the Wireless Link radio being enabled. Hold Last will maintain the most recent command from the control system.



Notice: Setting the Wireless Link Radio Fail Safe to Fail Off will cause the connection to the device to be dropped if not currently communication via IO-Link. To revert this setting, the device must be connected to IO-Link and reconfigured.



- F. Cycle count alarm event will be triggered once cycles exceed this threshold.
- G. Valve position beyond open/closed limit event will be triggered if valve position moves beyond the open/closed set-point by this percent.
- H. A Stroke Time over/under limit event will be triggered if the last stroke time is over/under the associated threshold.
- I. Event generated if valve returned to open without arriving at closed.
- J. Event generated if valve returned to closed without arriving at open.
- K. Event generated if the temperature of the device exceeds its rated maximum.
- L. Event generated if the temperature of the device is below its rated minimum.
- M. Event generated if output 1 is forced using Wireless Link.

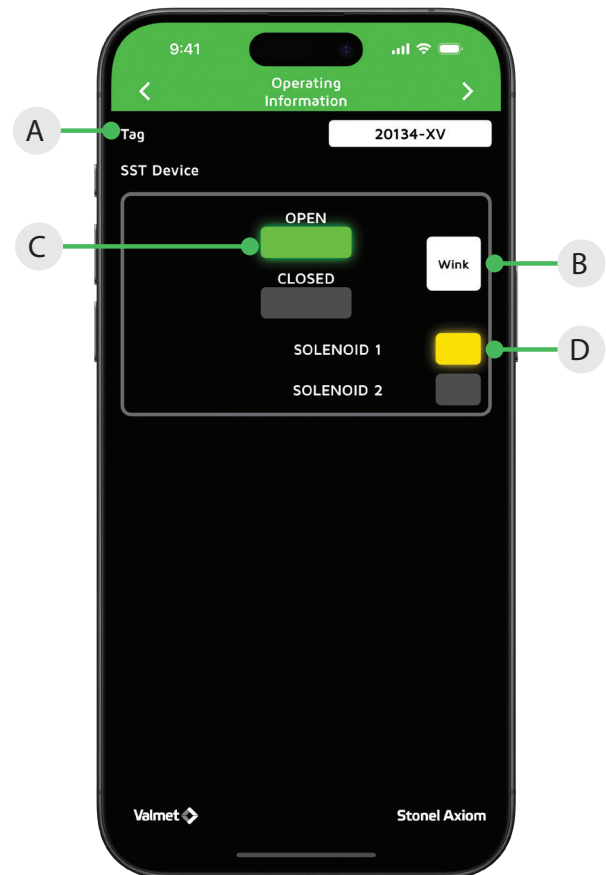
6 SST detail screens (AN35W, ANX35W, PI33W)

6.1 Operating information

You can customize the tag for a device and cause the device to wink from this screen.

Changing the device tag

- A. To change the tag, edit the existing tag in the associated text field. The tag can be up to sixteen characters long.
- B. Select the wink button. This will cause the module's LEDs to blink for 30 seconds, or until you press the "Stop Winking" button.
- C. Displays the valve position status.
- D. Displays the solenoid status.

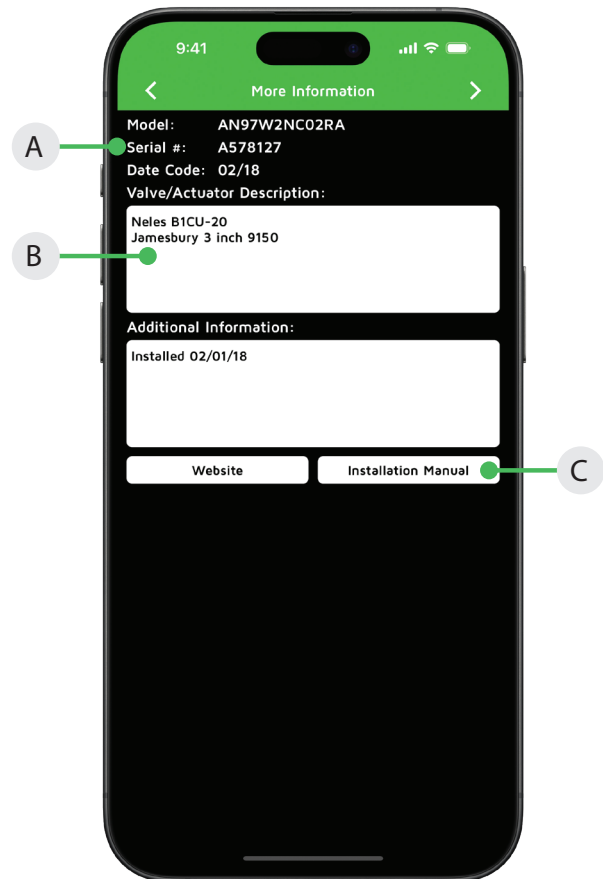


6 SST detail screens (AN35W, ANX35W, PI33W) continued

6.2 More information

To see additional information about a specific valve, swipe right or use the arrows at the top of the screen.

- A. At the top of the more Information screen, the unit model number, serial number, and date code are displayed. These are preset from the factory and cannot be changed.
- B. There are two customizable text boxes titled "Valve/Actuator Description" and "Additional Information" where up to 160 characters can be added for user notes, such as maintenance or service records.
- C. The direct links to the website and the unit Installation, Maintenance and Operating Instructions located on the bottom buttons of the More Information screen require an internet connection to access.



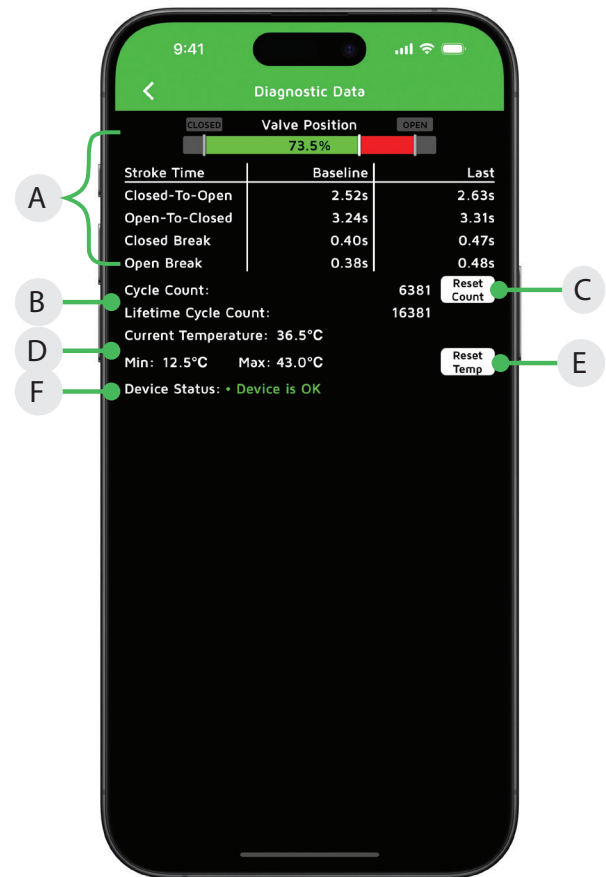
6 SST detail screens (AN35W, ANX35W, PI33W) continued

6.3 Diagnostics Data

To return to previous screens, swipe left or use the arrow at the top of this screen.

- The valve position information includes real time valve position, stroke time baseline, and stroke time of last cycle.
- The valve cycle count is displayed and indicates how many cycles the valve has made since last reset. A cycle is considered to be a complete actuation of the valve. Lifetime cycle count is not resettable.
- Selecting the reset count button will erase the cycle count and the stroke times and start counting again from 0.
- The current temperature of the valve monitor is displayed; along with the temperature range of the valve since last reset.
- Selecting the reset temp button will erase the historical temperature data and start a new period of temperature data collection.
- The device status can display numerous faults that are detected by the module. This data is only available via the Wireless Link app and is not accessible from the bus network. The following is a list of errors/faults that can be detected and displayed on compatible devices:

Device status errors/faults
Output shorted
Internal sensor fault
No magnet detected
Open signal shorted
Closed signal shorted
Thermal shutdown error
Supply voltage too low



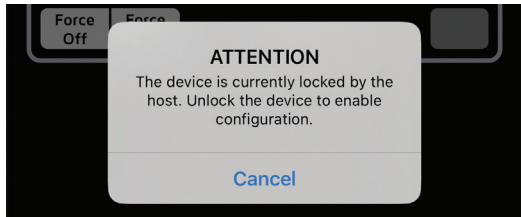
7 Expeditor detail screens (PI80W, PI81W)

7.1 Operating information

You can customize the tag for a device, cause the device to wink, and teach the open/closed limits from this screen.

Locked Screen

If the icons on the screen appear grayed-out or unavailable to select, this means the host is still in control. Check to ensure that the 4-20 mA control signal is $< 3.4 \text{ mA}$ or $> 21.1 \text{ mA}$.



Changing the device tag

- A. To change the tag, edit the existing tag in the associated text field. The tag can be up to sixteen characters long.
- B. Select the wink button. This will cause the module's LEDs to blink for 30 seconds, or until you press the "Stop Winking" button.

Caibration

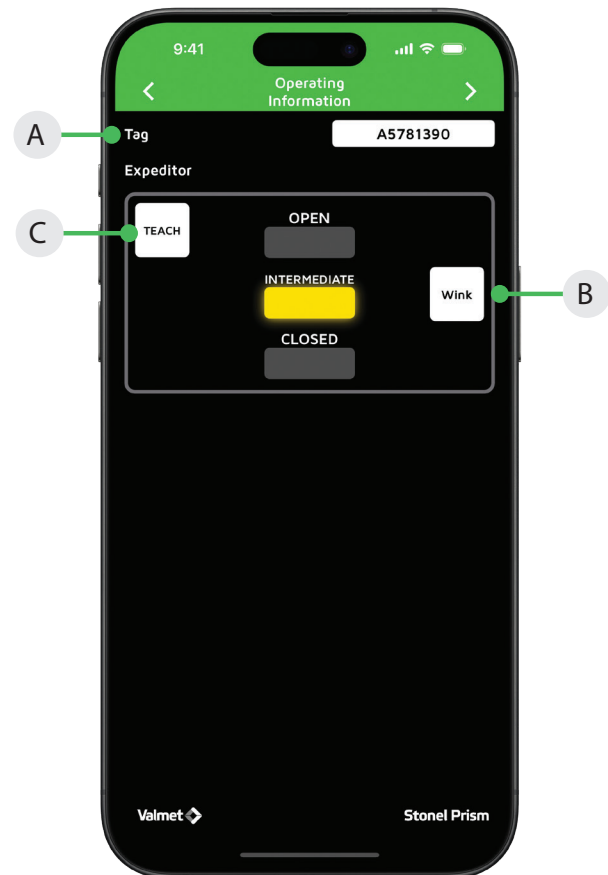
WARNING

Valve/actuator will automatically stroke while performing this procedure. Ensure hands are clear from the trigger assembly.

The VDC IN terminals must be connected to a 24 VDC power source and the unit must be connected to supply air. Actuate the valve to the 0% position, red LED will be lit.

- C. Select the TEACH button. The valve will cycle open and closed one or more times while determining the valve operating characteristics. The red, green, and yellow LEDs will flash intermittently during these cycles.

Calibration will finish with the valve at the commanded position and the appropriate LED will be lit.

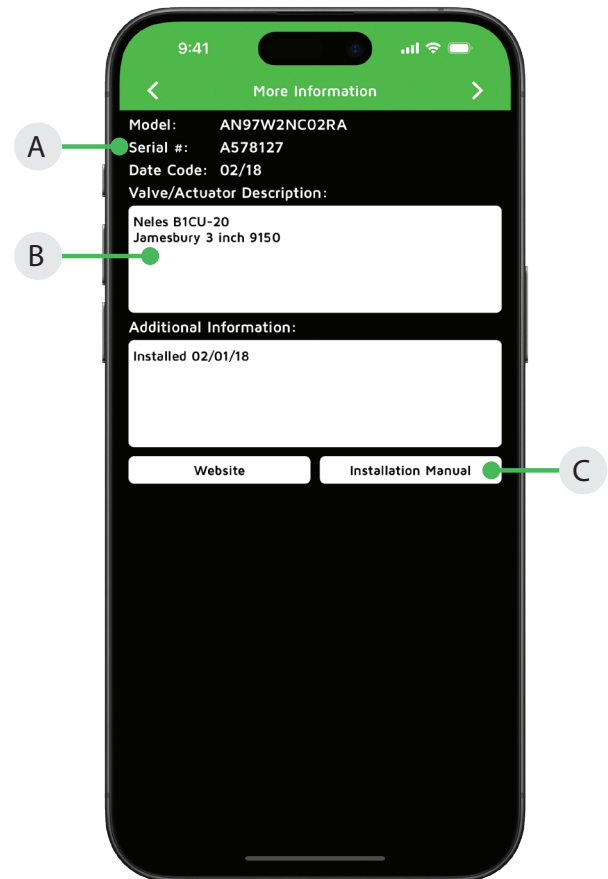


7 Expeditor detail screens (PI80W, PI81W) continued

7.2 More information

To see additional information about a specific valve, swipe right or use the arrows at the top of the screen.

- A. At the top of the more Information screen, the unit model number, serial number, and date code are displayed. These are preset from the factory and cannot be changed.
- B. There are two customizable text boxes titled "Valve/Actuator Description" and "Additional Information" where up to 160 characters can be added for user notes, such as maintenance or service records.
- C. The direct links to the website and the unit Installation, Maintenance and Operating Instructions located on the bottom buttons of the More Information screen require an internet connection to access.



7 Expeditor detail screens (PI80W, PI81W) continued

7.3 Diagnostics Data

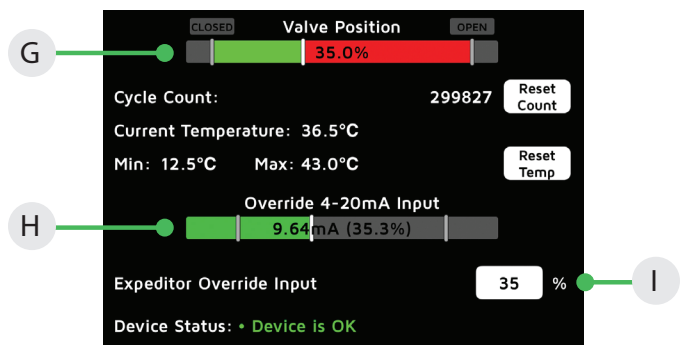
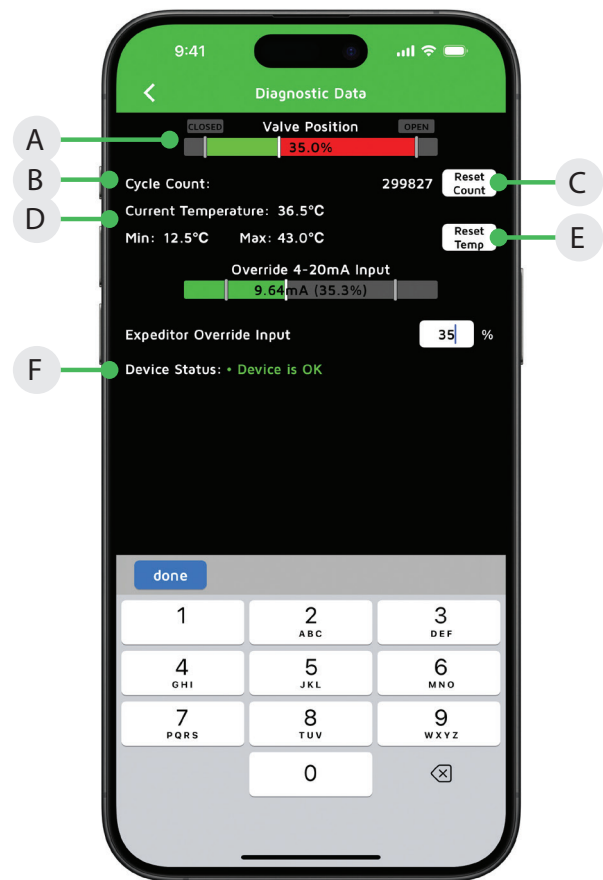
To return to previous screens, swipe left or use the arrow at the top of this screen.

- A. The valve position information includes real time valve position.
- B. The valve cycle count is displayed and indicates how many cycles the valve has made since last reset. A cycle is considered to be a complete actuation of the valve.
- C. Selecting the reset count button will erase the cycle count and start counting again from 0.
- D. The current temperature of the valve monitor is displayed; along with the temperature range of the valve since last reset.
- E. Selecting the reset temp button will erase the historical temperature data and start a new period of temperature data collection.
- F. The device status can display numerous faults that are detected by the module. This data is only available via the Wireless Link app and is not accessible from the bus network. The following is a list of errors/faults that can be detected and displayed on compatible devices:

Device status errors/faults
Expeditor
Output shorted
Internal sensor fault
No magnet detected
Input signal error

Verifying intermediate control function

- G. To verify intermediate control function select expeditor override input by selecting the percentage block. Change the existing percentage by keying into the number pad and select done.
- H. Displays the 4-20 mA control input signal from the host.
- I. Valve moves to indicated position entered into the keypad.



8 Menu Navigation

8.1 Device List Export

Exporting the Device List allows configuration backup and historical data recording. It can be combined with the Importing feature to allow mass configuration changes or single device "cloning". When exporting is started, a .csv file will be created with any discovered devices. The filename format is "Stonel Wireless Link Export yyyy-MM-dd-HH-mm-ss.csv".

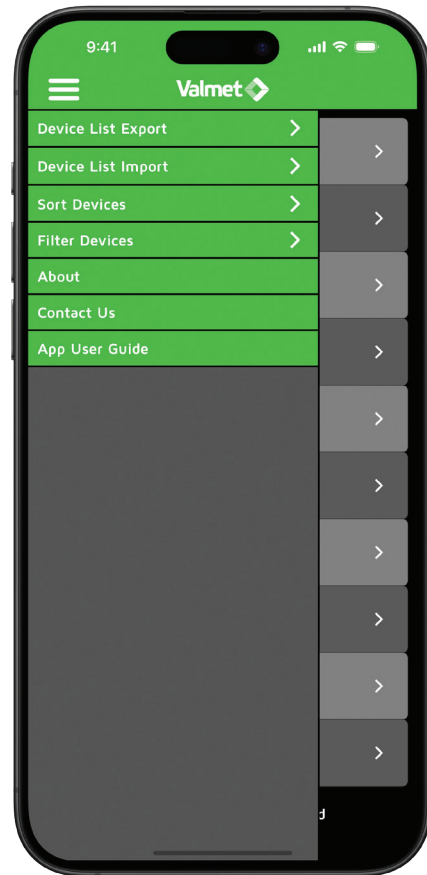
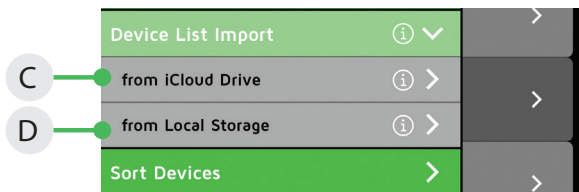
- A. Exporting to iCloud Drive allows the Device List to be opened by an app on the same handheld (such as the Numbers app) or by any other computer or device linked with the same iCloud account. An internet connection is not required if opening the file on the same handheld, but it is needed if the file will be opened on another device. The exported file is stored in your iCloud Drive, Wireless Link folder.
- B. Exporting to Local Storage places the exported Device List into your handheld's memory. An internet connection is not required. The file may be opened on a computer by transferring it using iTunes "File Sharing" or Finder. In 11 or later, the file may be opened by an app on the same handheld (such as the Numbers app).



8.2 Device List Import

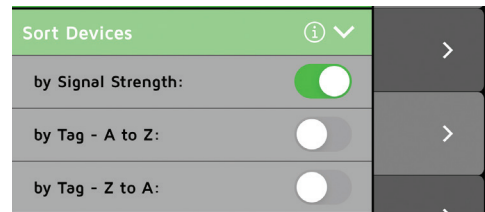
Importing the Device List allows many devices to be quickly configured. It can be combined with the Exporting feature to allow mass configuration changes or single device "cloning". Before importing is started, a .csv file named "CSVImport.csv" must be created and stored in the selected location. The Device Serial Number is used to "link" the .csv data to the Field Device. The Field Device must also be "unlocked" before any data can be changed.

- C. Save a file named "CSVImport.csv" in your iCloud Drive, Wireless Link folder. This file can be created remotely on a computer and uploaded to the iCloud Drive, or it can be created locally on your handheld using an app capable of exporting .csv files (such as the Numbers app). An internet connection is not required if creating the .csv file locally.
- D. Save a file named "CSVImport.csv" on a remote computer and transfer it into your handheld using iTunes "File Sharing" or Finder. In 11 or later, the file may be created locally on your handheld using an app capable of exporting .csv files (such as the Numbers app). An internet connection is not required.



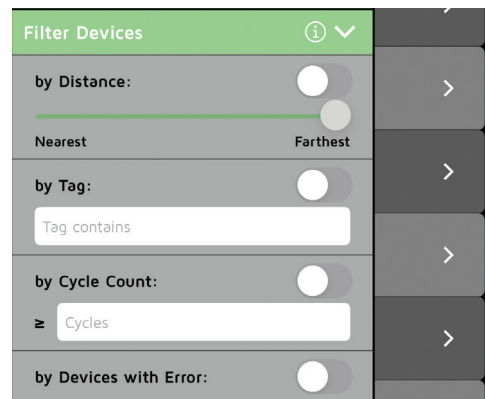
8.3 Sort Devices

The list of available devices is sorted from top to bottom by the selected sorting mode. Exactly one sorting mode must be enabled at all times.



8.4 Filter Devices

Use the filter to search for devices that meet certain criteria. More than one filter option may be enabled. All enabled criteria must be met by a Device for it to appear in the list of available devices.



9 Security of Wireless Link

9.1 General Security

Wireless Link allows for easy commissioning of a valve monitor. However, this easy access can raise questions about how a running process is protected from accidental or malicious changes to the valve monitor's settings or solenoid(s).

The state of a Wireless Link enabled valve monitor is dependent on its operating conditions. When the valve monitor is operating in the processing environment (communicating to the control system via fieldbus or conventional IO), Wireless Link access is read-only (device is locked). When the valve monitor only has power applied, but no active connection to the control system, Wireless Link allows for both reading data and configuration (device is unlocked). Therefore, whenever the device is operating in a running process, security is provided by preventing any changes to the valve monitor's configuration.

Most Wireless Link enabled valve monitors provide a method for the control system to unlock a device while it is operating in the process environment. The method varies slightly between the types of devices, but typically involves unlocking the device by sending a signal via the process data output. Please refer to the specifics on the valve monitor's operating information section or user manual. The control system may lock the valve monitor at any time by reverting the process output to its default state.

Some Wireless Link enabled valve monitors provide for additional security options allowing for the configuration the fail-safe state of Wireless Link during a loss of communication to the control system. The user may select if the Wireless Link radio should be on or off and if Wireless Link should have the ability to change configuration (be locked or unlocked) during a loss of communication.

9.1 Summary

Wireless Link provides security to the process by being in a read-only (locked) state when connected to the control system. Wireless Link, therefore, has the same level of security as the control system itself.

Valmet Flow Control Oy

Vanha Porvoontie 229, 01380 Vantaa, Finland.

Tel. +358 10 417 5000.

Valmet Flow Control Inc., Stonel product center

26271 US Hwy 59, Fergus Falls, MN 56537 USA.

Tel. +1 218 739 5774

www.valmet.com/flowcontrol

Subject to change without prior notice.

Neles, Neles Easyflow, Jamesbury, Stonel, Valvcon and Flowrox, and certain other trademarks, are either registered trademarks or trademarks of Valmet Oyj or its subsidiaries in the United States and/or in other countries.

