

## Commissioning kits and software

Model number  
CK464001A



### AS-Interface commissioning kit

This AS-Interface commissioning kit contains all the hardware and software needed to fully configure and test AS-Interface devices. This kit can be used to bench test single AS-Interface devices or commission entire segments. This kit is a must for shop testing and for stroke testing AS-Interface devices.

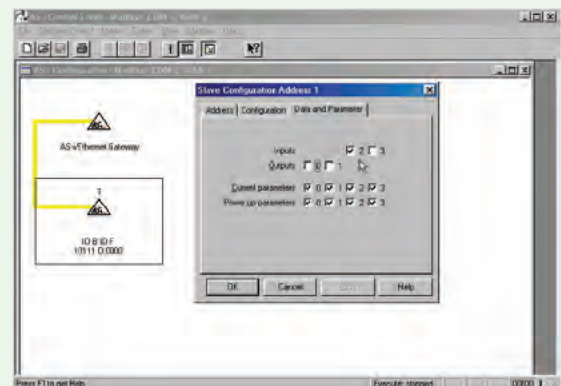
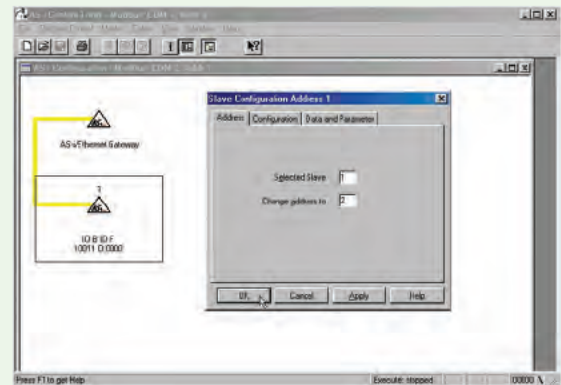
#### Kit contents

- Modbus RS485 gateway
- 2.8 amp AS-Interface power supply
- AS-Interface control tools software
- Serial cable
- USB to Serial converter



Specifications	
Gateway	GW458086A Modbus RS485/ AS-Interface gateway
Power supply	PS459015A AS-Interface 2.8 amp
Cable description	6' 9-pin male x 9-pin female serial cable, USB to Serial converter included
Software	AS-Interface control tools
Operating temperature	-25° to +55°C (-13° to +131°F)

### Commissioning kit





Valmet's professionals around the world work close to our customers and are committed to moving our customers' performance forward – every day.

**Valmet Flow Control Oy**

Vanha Porvoontie 229  
01380 Vantaa, Finland  
flowcontrol@valmet.com  
+358 10 417 5000  
valmet.com/flowcontrol

**Valmet Flow Control Inc.  
Stonel product center**

26271 US Hwy 59, Fergus Falls, MN 56537 USA.  
Tel. +1 218 739 5774.  
sales.stonel@valmet.com  
valmet.com/flowcontrol

